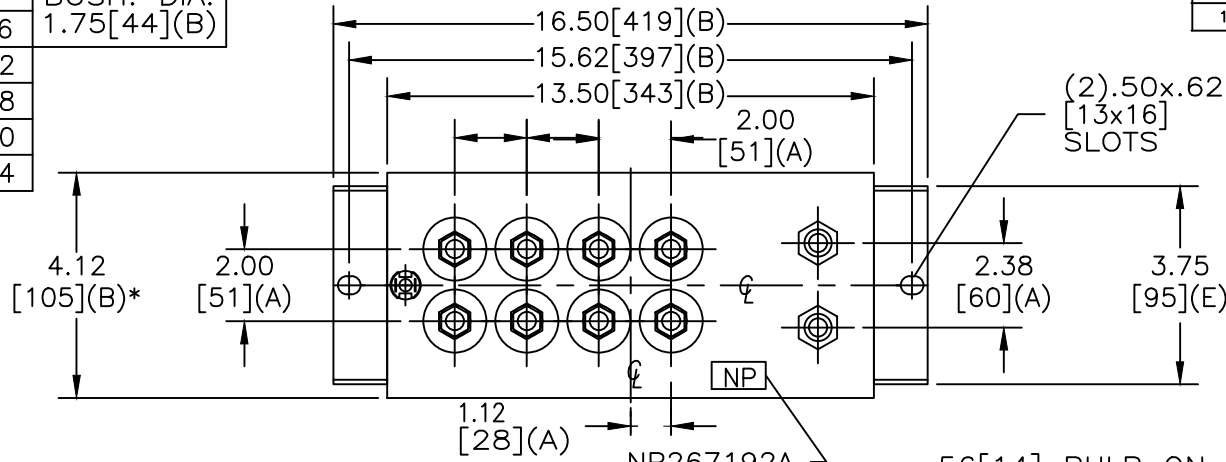
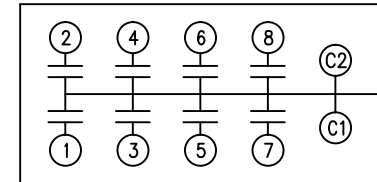


SIZE A	DWG NO 19L1049WH4	SHT 2	REV 1
REV 1	DESCRIPTION CHG FLUID LABEL	DATE 2/4/2014	APPROVED JBC

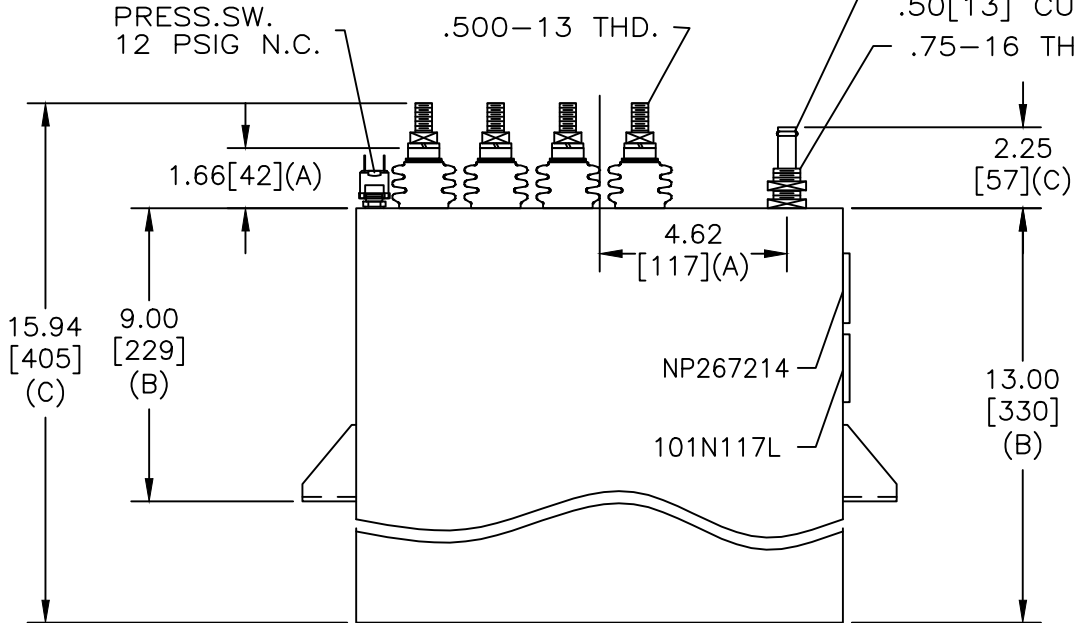
TOL	+/-	BUSH. DIA.
A	.06	1.75[44](B)
B	.12	
C	.18	
D	.50	
E	.04	



TERM	uF	kVAR
1	2.5	136.9
2	2.5	136.9
3	2.5	136.9
4	2.5	136.9
5	2.5	136.9
6	2.5	136.9
7	2.5	136.9
8	2.5	136.9



SCHEMATIC DIAGRAM - 801



NO INTERNAL DISCH RESISTORS
 CAT. 19L1049WH4 SN
 1095KVAR 660V 20000HZ 1PH
 8x2.5 UF/TAP
 1.50 GAL. COMBUSTIBLE LIQUID
 CAUTION! BEFORE INSTALLING OR
 OPERATING READ GEH-2733
 NP267214

* UP TO +.50[13]
 CASE BULGE

MAX. TERMINAL
 TIGHTENING TORQUE
 15 FT-LBS
 NP267192A

GE ENERGY FORT EDWARD, N.Y., U.S.A.	SIZE A	<h1>OUTLINE</h1> <h2>19L1049WH4</h2>	SHEET 2 CONT ON -
	DRAWN E. McGinn DATE JUL 29, 1996		
ISSUED DATE	DATE	SHEET 2 CONT ON -	DISTR. TO