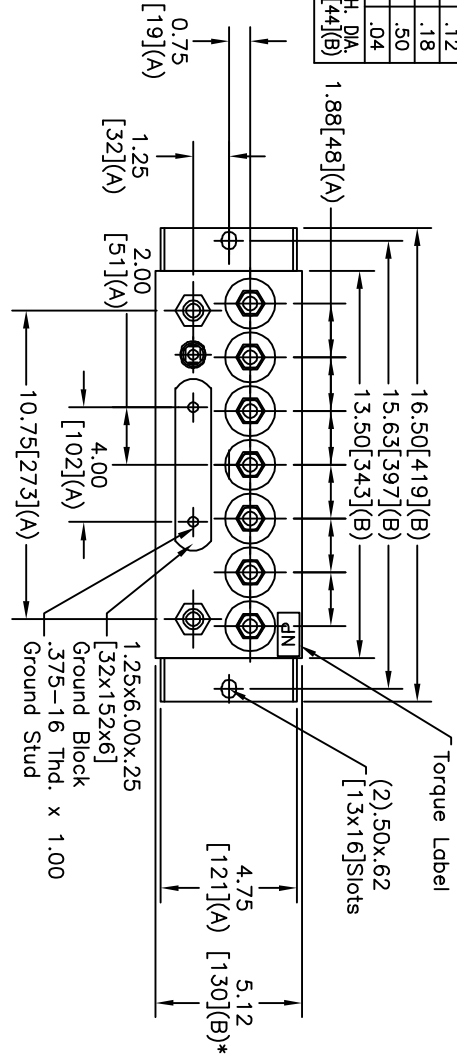
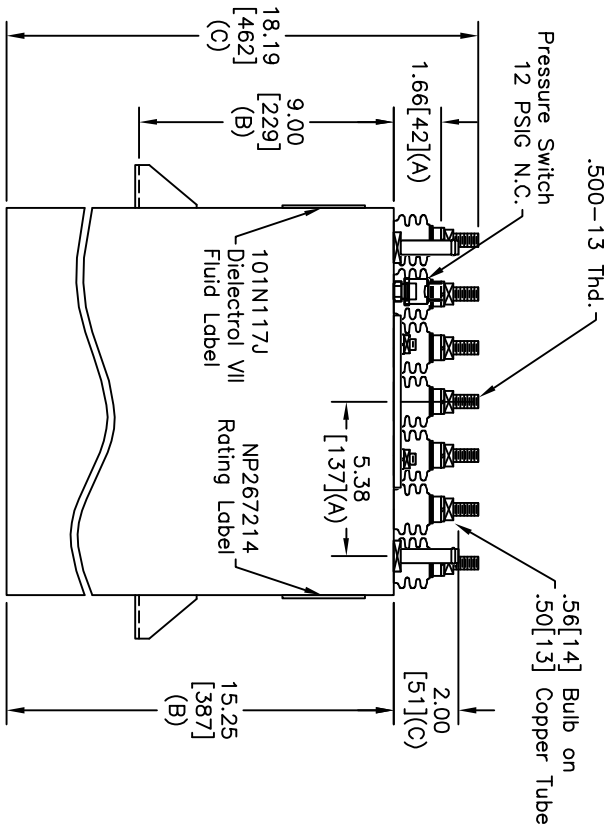


TOL	+/-
A	.06
B	.12
C	.18
D	.50
E	.04

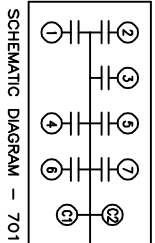


TERM	UF	KVAR
1	2.5	141.43
2	2.5	141.43
3	2.5	141.43
4	2.5	141.43
5	2.5	141.43
6	2.5	141.43
7	2.5	141.43



* UP TO +50 [13]
CASE BULGE
MAX. TERMINAL
TIGHTENING TORQUE
15 FT-LBS.
NP267192A

REV	DESCRIPTION	DATE	APPROVED
1	RE DRAW	9/26/2006	BTR



NO INTERNAL DISCH RESISTORS
CAT. 19L1050WH2 SN
990KVAR 600V 25000HZ 1PH
7x2.5UF/TAP
2.2 GAL. COMBUSTIBLE LIQUID
CAUTION! BEFORE INSTALLING OR
OPERATING READ GEH-2733
MADE IN USA
NP267214

GE ENERGY
FORT EDWARD, N.Y., U.S.A.

DRAWN E. MCGINNIN
DATE 7/31/1996

ISSUED DATE 7/31/1996

SIZE A
SCALE WC9

OUTLINE
19L1050WH4