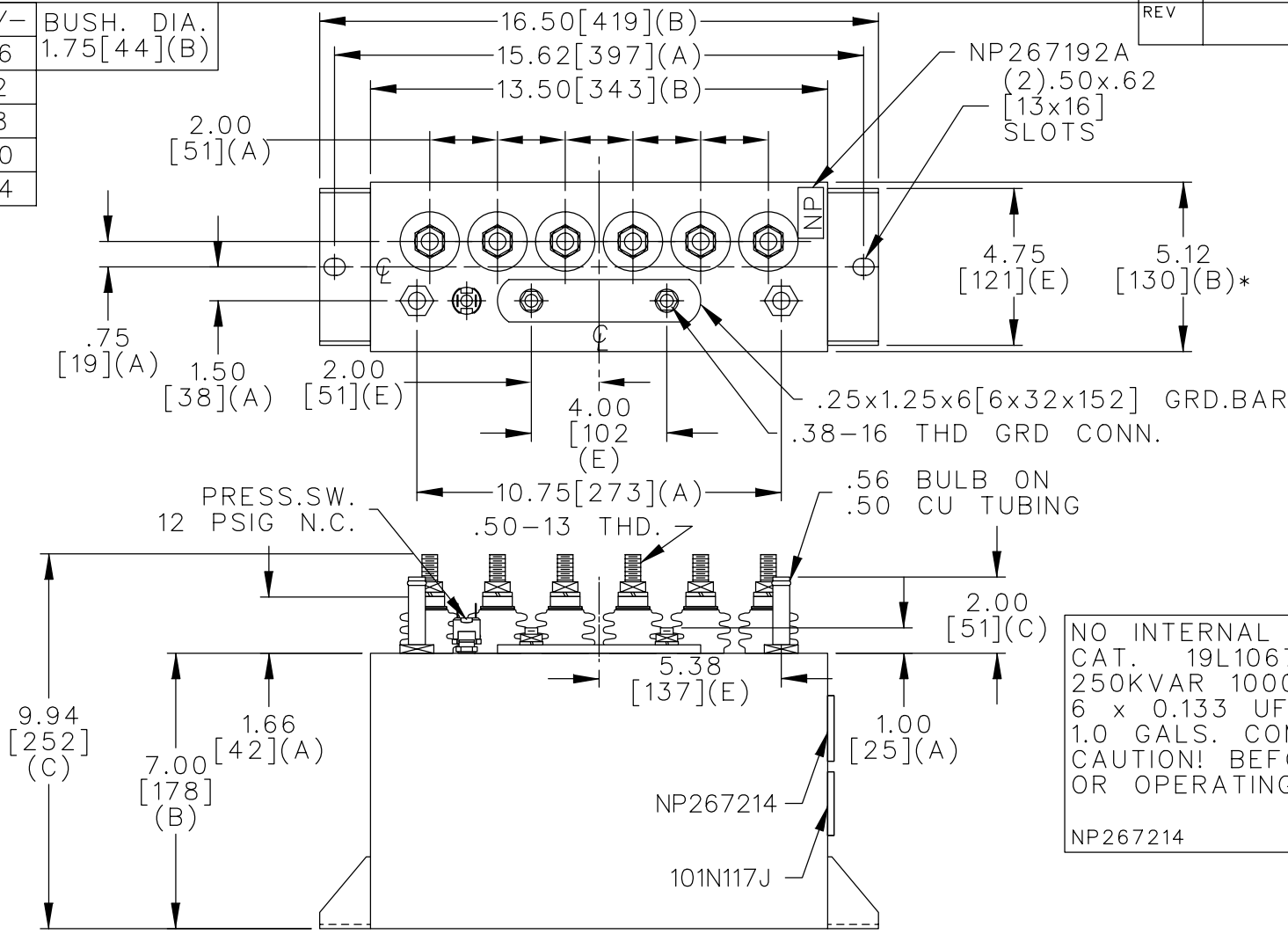
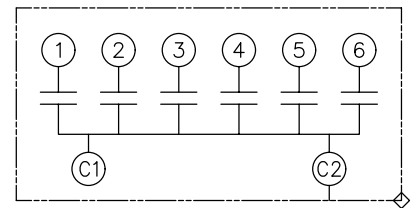


|     |     |             |
|-----|-----|-------------|
| TOL | +/- | BUSH. DIA.  |
| A   | .06 | 1.75[44](B) |
| B   | .12 |             |
| C   | .18 |             |
| D   | .50 |             |
| E   | .04 |             |



| TERM | uF   | kVAR  |
|------|------|-------|
| 1    | .133 | 41.67 |
| 2    | .133 | 41.67 |
| 3    | .133 | 41.67 |
| 4    | .133 | 41.67 |
| 5    | .133 | 41.67 |
| 6    | .133 | 41.67 |



SCHEMATIC DIAGRAM - 601

NO INTERNAL DISCH RESISTORS  
 CAT. 19L1067WH4 SN  
 250KVAR 1000V 50000HZ 1PH  
 6 x 0.133 UF/TAP  
 1.0 GALS. COMBUSTIBLE LIQUID  
 CAUTION! BEFORE INSTALLING  
 OR OPERATING READ GEH-2733  
 NP267214

\* UP TO +.50  
 CASE BULGE

MAX. TERMINAL  
 TIGHTENING TORQUE  
 15 FT-LBS

NP267192A

|        |   |               |                  |                                     |          |
|--------|---|---------------|------------------|-------------------------------------|----------|
|        | CAPACITOR & POWER PROTECTION<br>FORT EDWARD, N.Y., U.S.A. |               | SIZE<br><b>A</b> | <b>OUTLINE</b><br><b>19L1067WH4</b> |          |
|        | DRAWN E.McGINN  | DEC. 30, 1996 | SCALE            |                                     |          |
| ISSUED |   |               | SHEET 2          | CONT. ON -                          | DISTR TO |