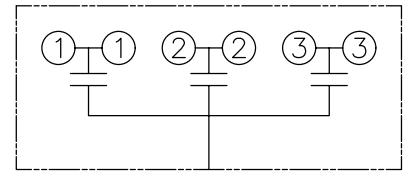
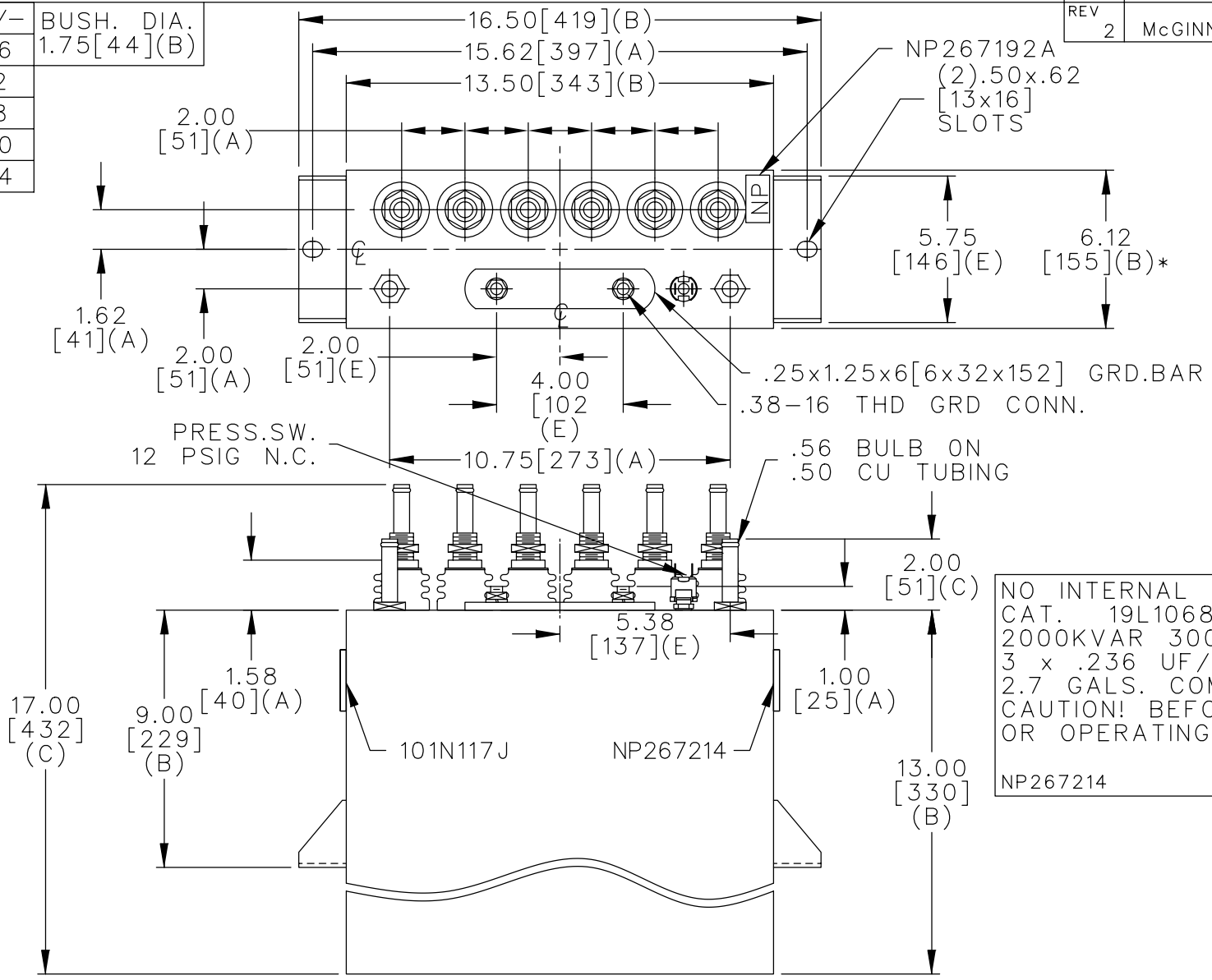


TOL	+/-	BUSH. DIA.
A	.06	1.75[44](B)
B	.12	
C	.18	
D	.50	
E	.04	

SECT	uF	kVAR
1	.236	666.7
2	.236	666.7
3	.236	666.7



NO INTERNAL DISCH RESISTORS
 CAT. 19L1068WH4 SN
 2000KVAR 3000V 5000HZ 1PH
 3 x .236 UF/TAP
 2.7 GALS. COMBUSTIBLE LIQUID
 CAUTION! BEFORE INSTALLING
 OR OPERATING READ GEH-2733
 NP267214

* UP TO +.50
 CASE BULGE

MAX. TERMINAL
 TIGHTENING TORQUE
 15 FT-LBS

NP267192A

	CAPACITOR & POWER PROTECTION FORT EDWARD, N.Y., U.S.A.		SIZE A	OUTLINE 19L1068WH4	
	DRAWN E.McGINN	JAN. 15, 1997	SCALE		
ISSUED	1-22-97	SHEET 2	CONT. ON 3	DISTR TO	