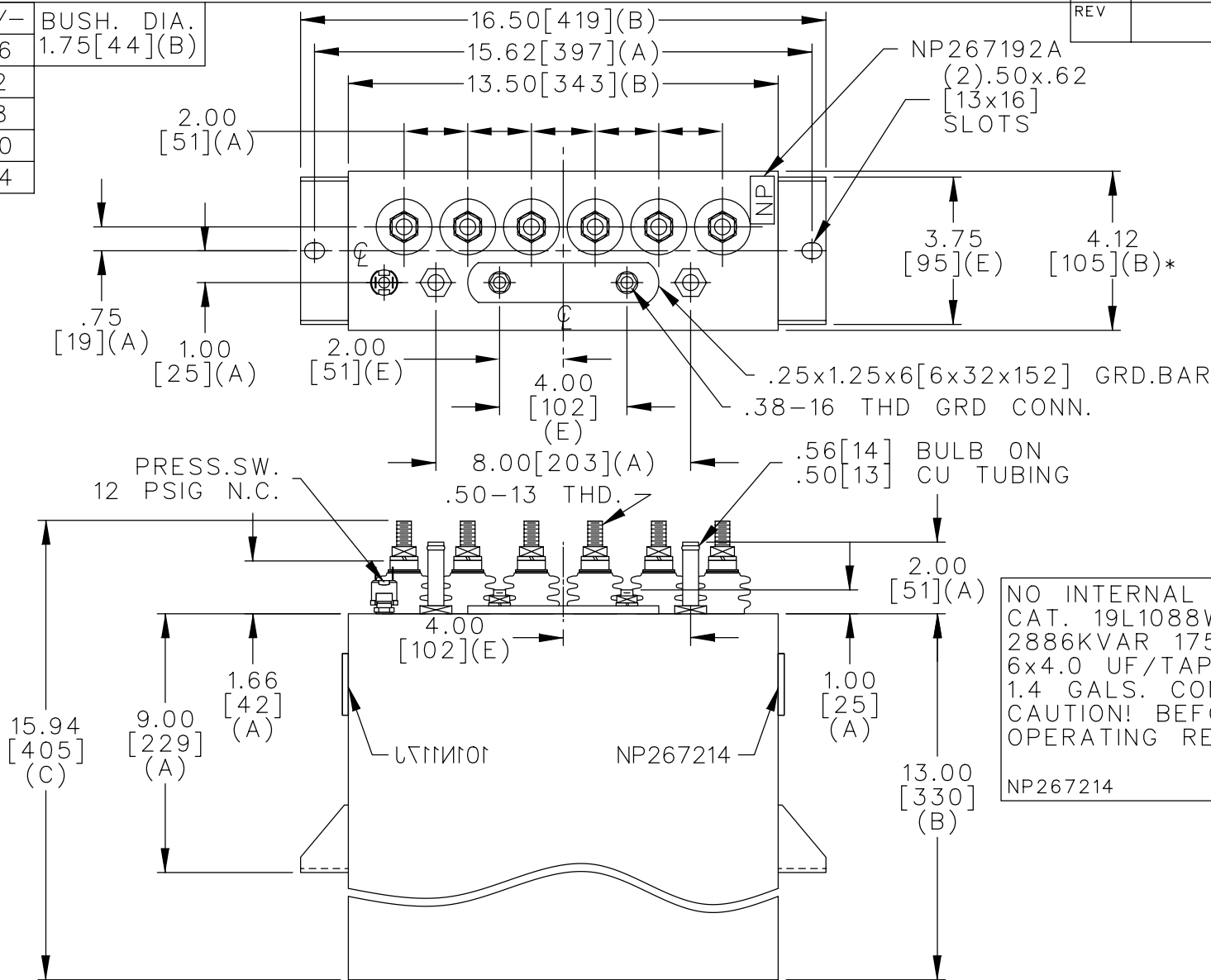
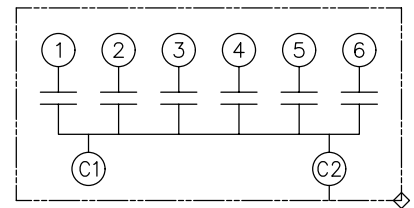


TOL	+/-	BUSH. DIA.
A	.06	1.75[44](B)
B	.12	
C	.18	
D	.50	
E	.04	



TERM	uF	kVAR
1	4.00	481
2	4.00	481
3	4.00	481
4	4.00	481
5	4.00	481
6	4.00	481



SCHEMATIC DIAGRAM - 601

NO INTERNAL DISCH RESISTORS  
 CAT. 19L1088WH4 SN  
 2886KVAR 1750V 10000HZ 1PH  
 6x4.0 UF/TAP  
 1.4 GALS. COMBUSTIBLE LIQUID  
 CAUTION! BEFORE INSTALLING OR  
 OPERATING READ GEH-2733  
 NP267214

\* UP TO +.50[13]  
 CASE BULGE

MAX. TERMINAL  
 TIGHTENING TORQUE  
 15 FT-LBS

NP267192A

	CAPACITOR & POWER PROTECTION FORT EDWARD, N.Y., U.S.A.		SIZE <b>A</b>	OUTLINE 19L1088WH4	
	DRAWN E.McGINN	MAY 19, 1997	SCALE		
ISSUED	SHEET 2 CONT. ON -		DISTR TO		