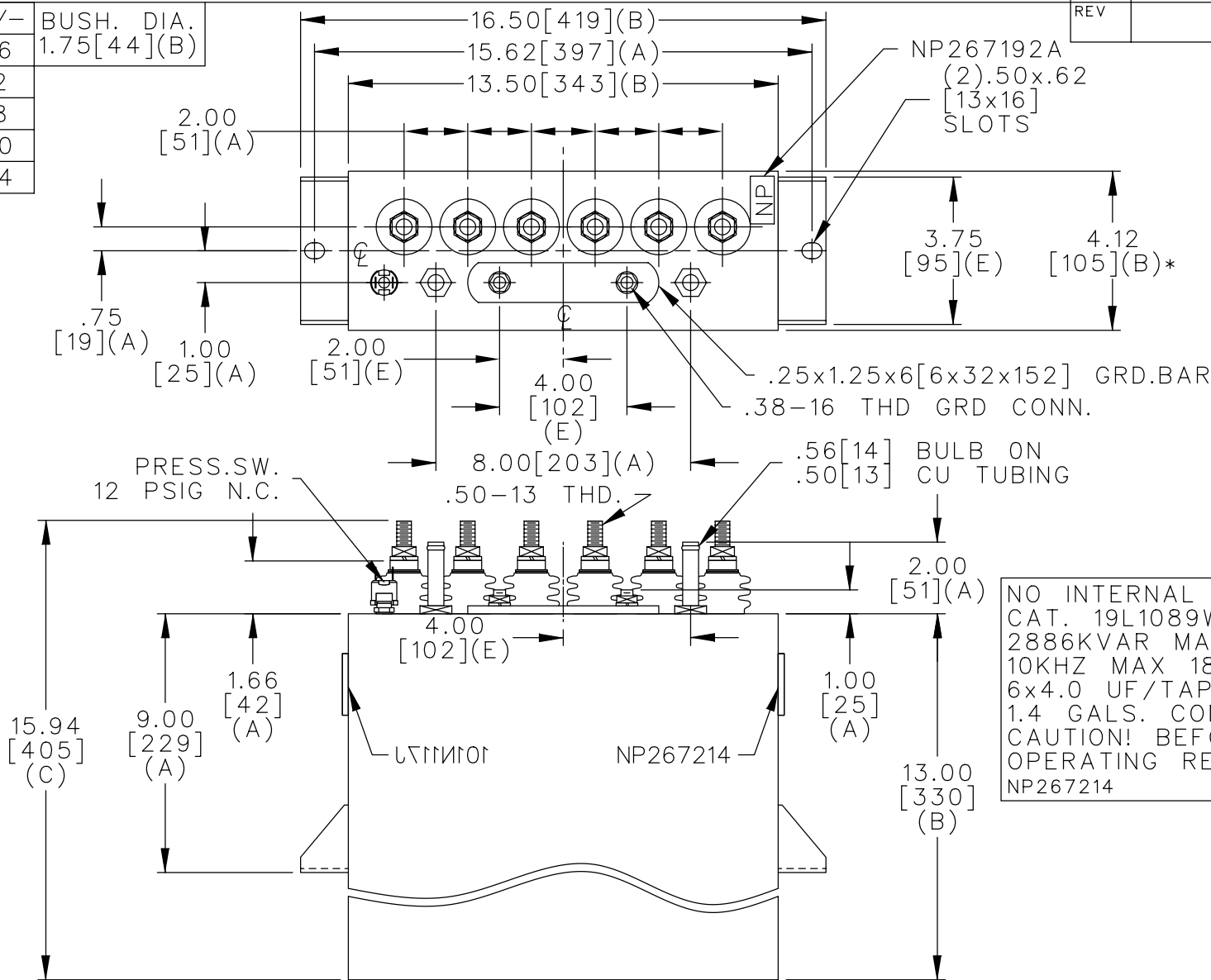
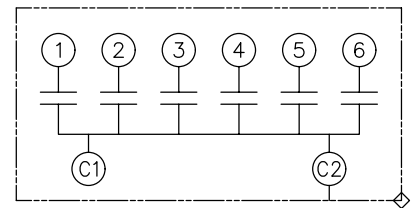


TOL	+/-	BUSH. DIA.
A	.06	1.75[44](B)
B	.12	
C	.18	
D	.50	
E	.04	



TERM	uF	kVAR
1	4.00	481
2	4.00	481
3	4.00	481
4	4.00	481
5	4.00	481
6	4.00	481



SCHEMATIC DIAGRAM - 601

NO INTERNAL DISCH RESISTORS
 CAT. 19L1089WH4 SN
 2886KVAR MAX 1750V MAX 1PH
 10KHZ MAX 1875ARMS MAX
 6x4.0 UF/TAP
 1.4 GALS. COMBUSTIBLE LIQUID
 CAUTION! BEFORE INSTALLING OR
 OPERATING READ GEH-2733
 NP267214

* UP TO +.50[13]
 CASE BULGE

MAX. TERMINAL
 TIGHTENING TORQUE
 15 FT-LBS

NP267192A

	CAPACITOR & POWER PROTECTION FORT EDWARD, N.Y., U.S.A.		SIZE A	OUTLINE 19L1089WH4	SHEET 2 CONT. ON -
	DRAWN E.McGINN	MAY 23, 1997	SCALE		
ISSUED					

DISTR TO