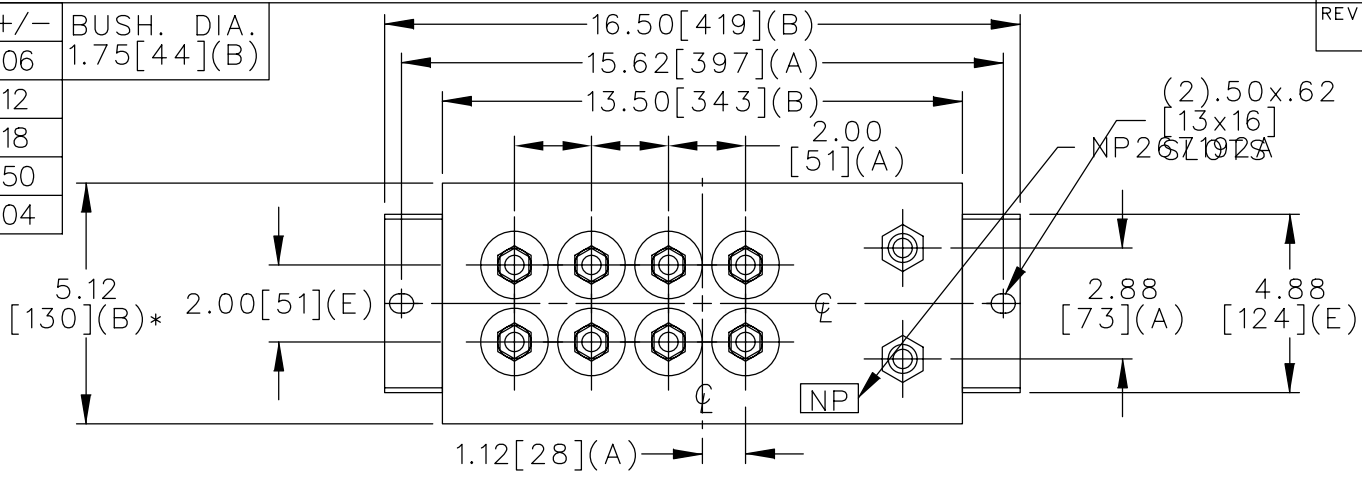
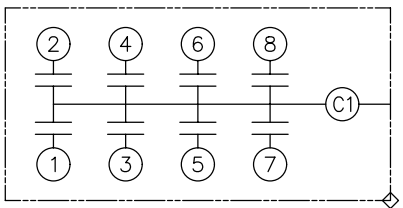


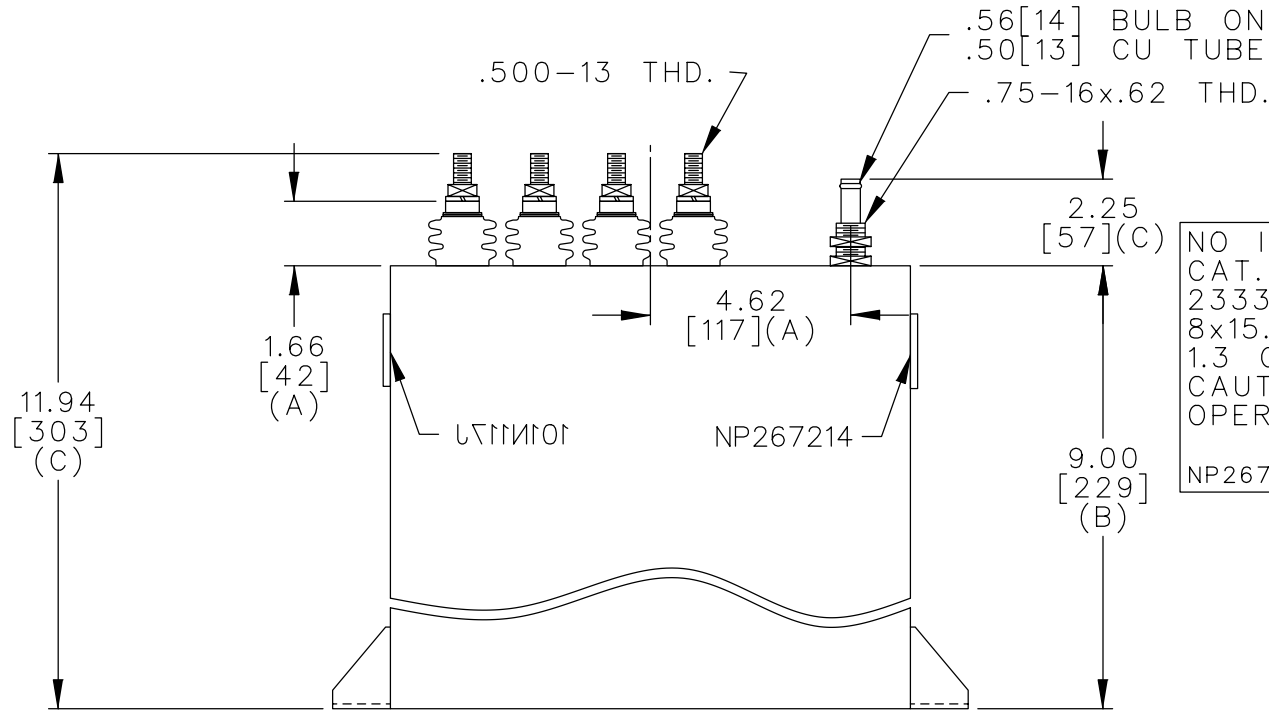
TOL	+/-	BUSH. DIA.
A	.06	1.75[44](B)
B	.12	
C	.18	
D	.50	
E	.04	



TERM	uF	kVAR
1	15.47	291.6
2	15.47	291.6
3	15.47	291.6
4	15.47	291.6
5	15.47	291.6
6	15.47	291.6
7	15.47	291.6
8	15.47	291.6



SCHEMATIC DIAGRAM - 806



NO INTERNAL DISCH RESISTORS
 CAT. 19L1091WH3 SN
 2333KVAR 1000V 3000HZ 1PH
 8x15.47 UF/TAP
 1.3 GALS. COMBUSTIBLE LIQUID
 CAUTION! BEFORE INSTALLING OR
 OPERATING READ GEH-2733
 NP267214

* UP TO +.50[13]
 CASE BULGE

MAX. TERMINAL
 TIGHTENING TORQUE
 15 FT-LBS

NP267192A

	CAPACITOR & POWER PROTECTION FORT EDWARD, N.Y., U.S.A.		SIZE A	<h1>OUTLINE</h1> <h2>19L1091WH3</h2>		SHEET 2	CONT. ON -
	DRAWN E.McGINN	JULY 22, 1997	SCALE				
ISSUED							

DISTR TO