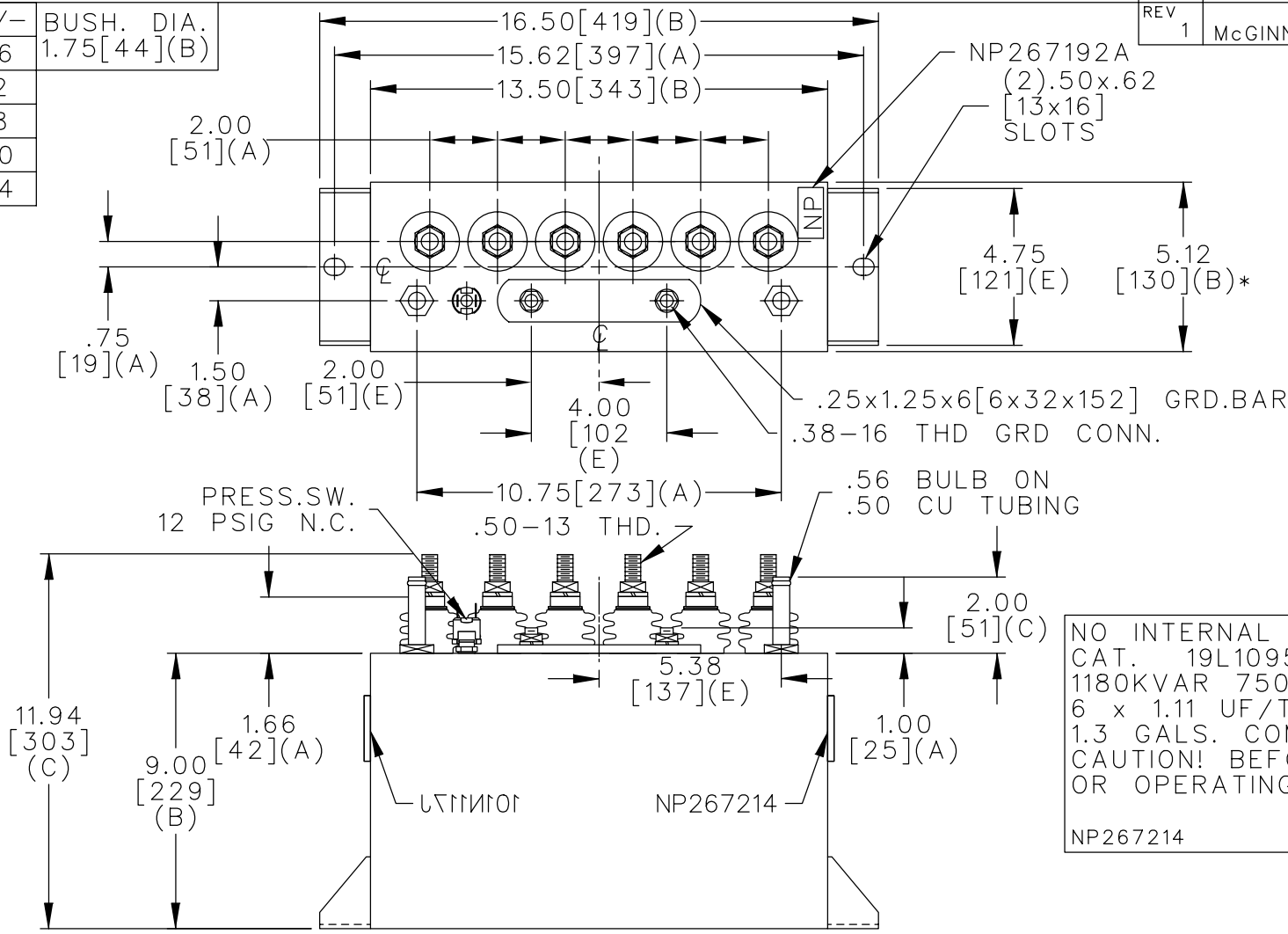
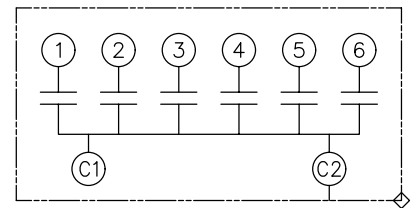


TOL	+/-	BUSH. DIA.
A	.06	1.75[44](B)
B	.12	
C	.18	
D	.50	
E	.04	



TERM	uF	kVAR
1	1.11	196.6
2	1.11	196.6
3	1.11	196.6
4	1.11	196.6
5	1.11	196.6
6	1.11	196.6



SCHEMATIC DIAGRAM - 601

NO INTERNAL DISCH RESISTORS
 CAT. 19L1095WH4 SN
 1180KVAR 750V 50000HZ 1PH
 6 x 1.11 UF/TAP
 1.3 GALS. COMBUSTIBLE LIQUID
 CAUTION! BEFORE INSTALLING
 OR OPERATING READ GEH-2733
 NP267214

* UP TO +.50
CASE BULGE

MAX. TERMINAL
TIGHTENING TORQUE
15 FT-LBS

NP267192A

	CAPACITOR & POWER PROTECTION FORT EDWARD, N.Y., U.S.A.		SIZE A	<h1>OUTLINE</h1> <h2>19L1095WH4</h2>		SHEET 2 CONT. ON -
	DRAWN E.McGINN	AUG. 19, 1997	SCALE			
ISSUED	8-20-97	DISTR TO				