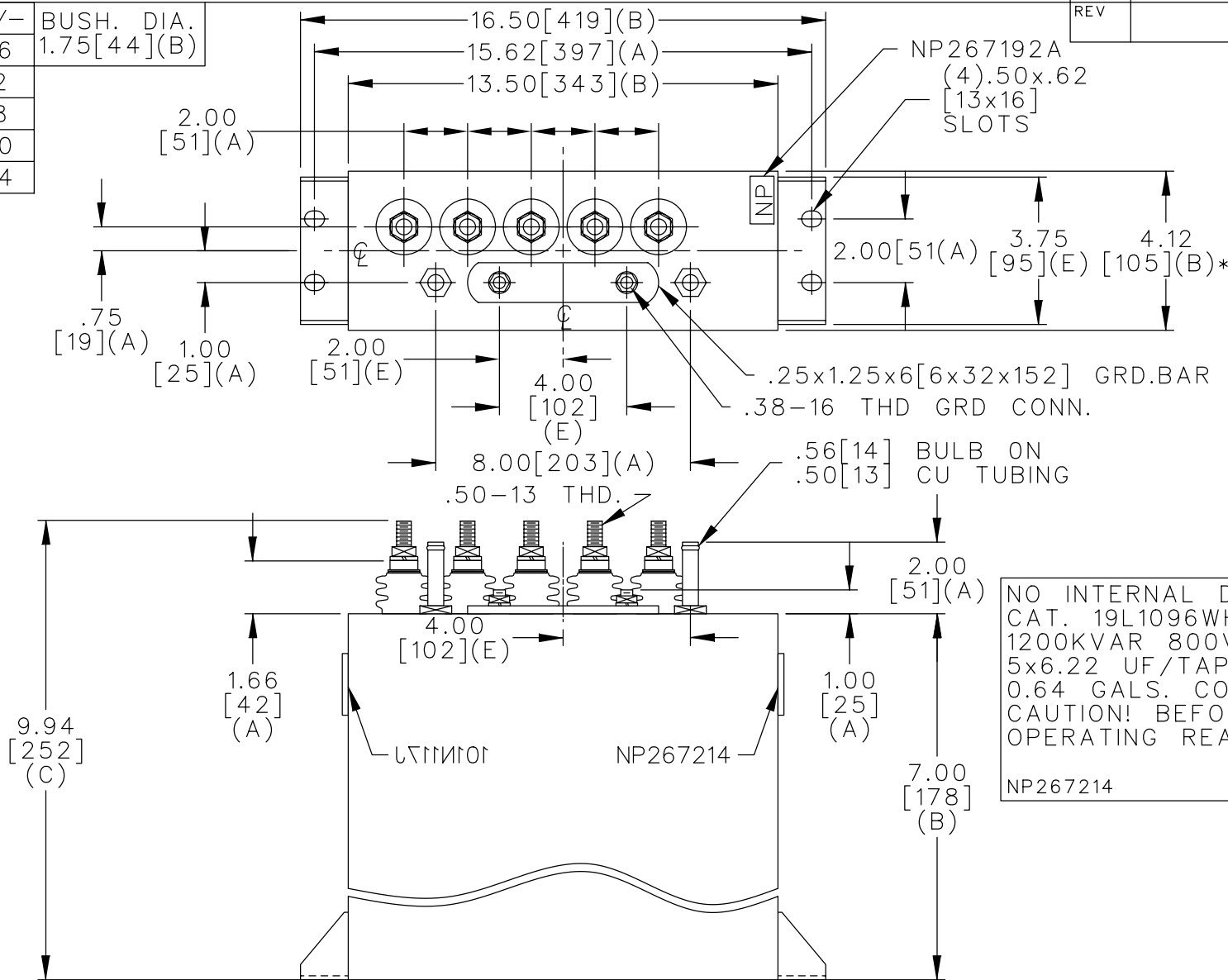
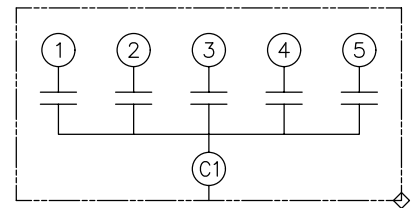


TOL	+/-	BUSH. DIA.
A	.06	1.75[44](B)
B	.12	
C	.18	
D	.50	
E	.04	



TERM	uF	kVAR
1	6.22	240
2	6.22	240
3	6.22	240
4	6.22	240
5	6.22	240



SCHEMATIC DIAGRAM - 501

NO INTERNAL DISCH RESISTORS
 CAT. 19L1096WH3 SN
 1200KVAR 800V 9600HZ 1PH
 5x6.22 UF/TAP
 0.64 GALS. COMBUSTIBLE LIQUID
 CAUTION! BEFORE INSTALLING OR
 OPERATING READ GEH-2733
 NP267214

* UP TO +.50[13]
 CASE BULGE

MAX. TERMINAL
 TIGHTENING TORQUE
 15 FT-LBS

NP267192A

	CAPACITOR & POWER PROTECTION FORT EDWARD, N.Y., U.S.A.		SIZE A	OUTLINE 19L1096WH3	SHEET 2 CONT. ON -
	DRAWN E.McGINN	SEPT 19, 1997	SCALE		
ISSUED				DISTR TO	