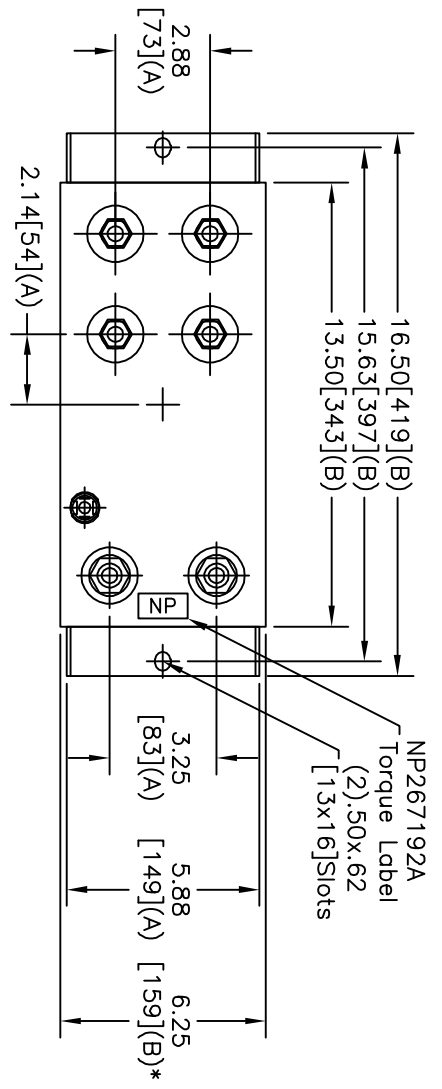
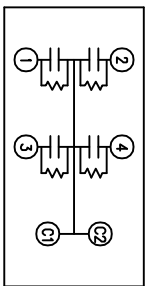
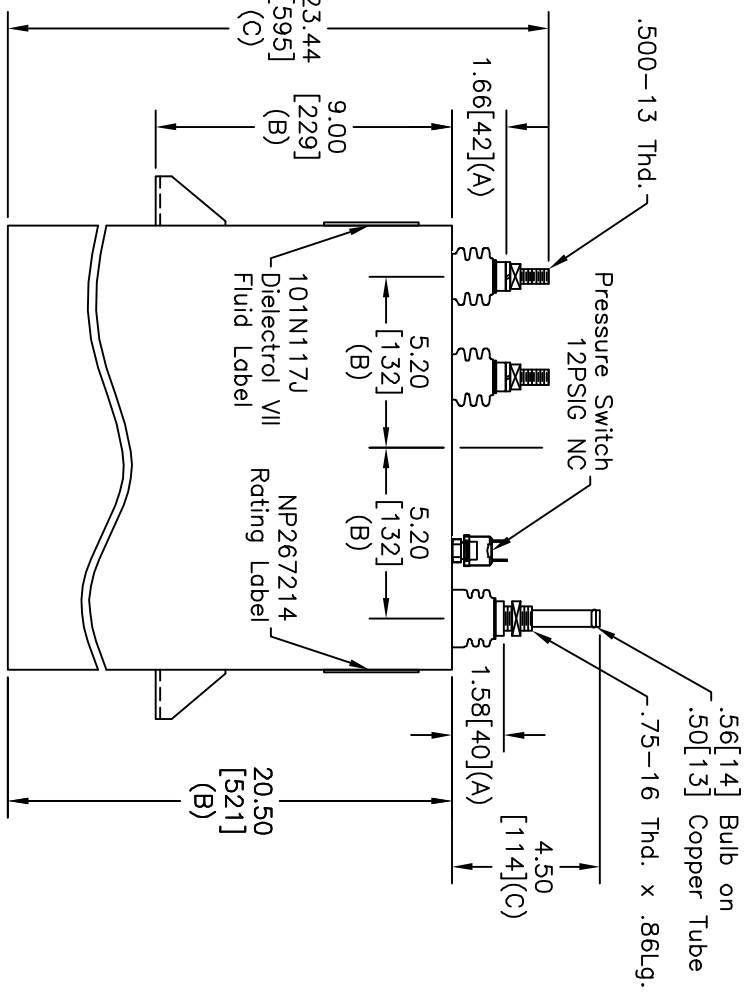


TOL	+/-
A	.06
B	.12
C	.18
D	.50
E	.04
BUSH, DIA.	1.75[.44](B)



TERM	UF	KVAR
1	25.1	454
2	25.1	454
3	25.1	454
4	25.1	454



SCHEMATIC DIAGRAM - 422

WITH INTERNAL DISCH RESISTORS
 CAT. 19L1098WH4 SN
 1815KVAR 2400V 500HZ 1PH
 4x25.1 UF/TAP
 2.51 GAL. COMBUSTIBLE LIQUID
 CAUTION! BEFORE INSTALLING OR
 OPERATING READ GEH-2733
 MADE IN USA NP267214

* UP TO +.50[13]
 CASE BULGE

MAX. TERMINAL
 TIGHTENING TORQUE
 15 FT-LBS.
 NP267192A

		GE ENERGY		SIZE A
		FORT EDWARD, N.Y., U.S.A.		
DRAWN	McGINN	DATE	10/7/1997	SCALE
ISSUED		DATE	10/8/1997	
		WC6		
		SHEET	2	CONT
				ON
				3

OUTLINE

19L1098WH4

SIZE	DWG NO	SHT	REV
A	19L1098WH4	2	1
REV	DESCRIPTION	DATE	APPROVED
1	Redrow	4/10/06	BTR