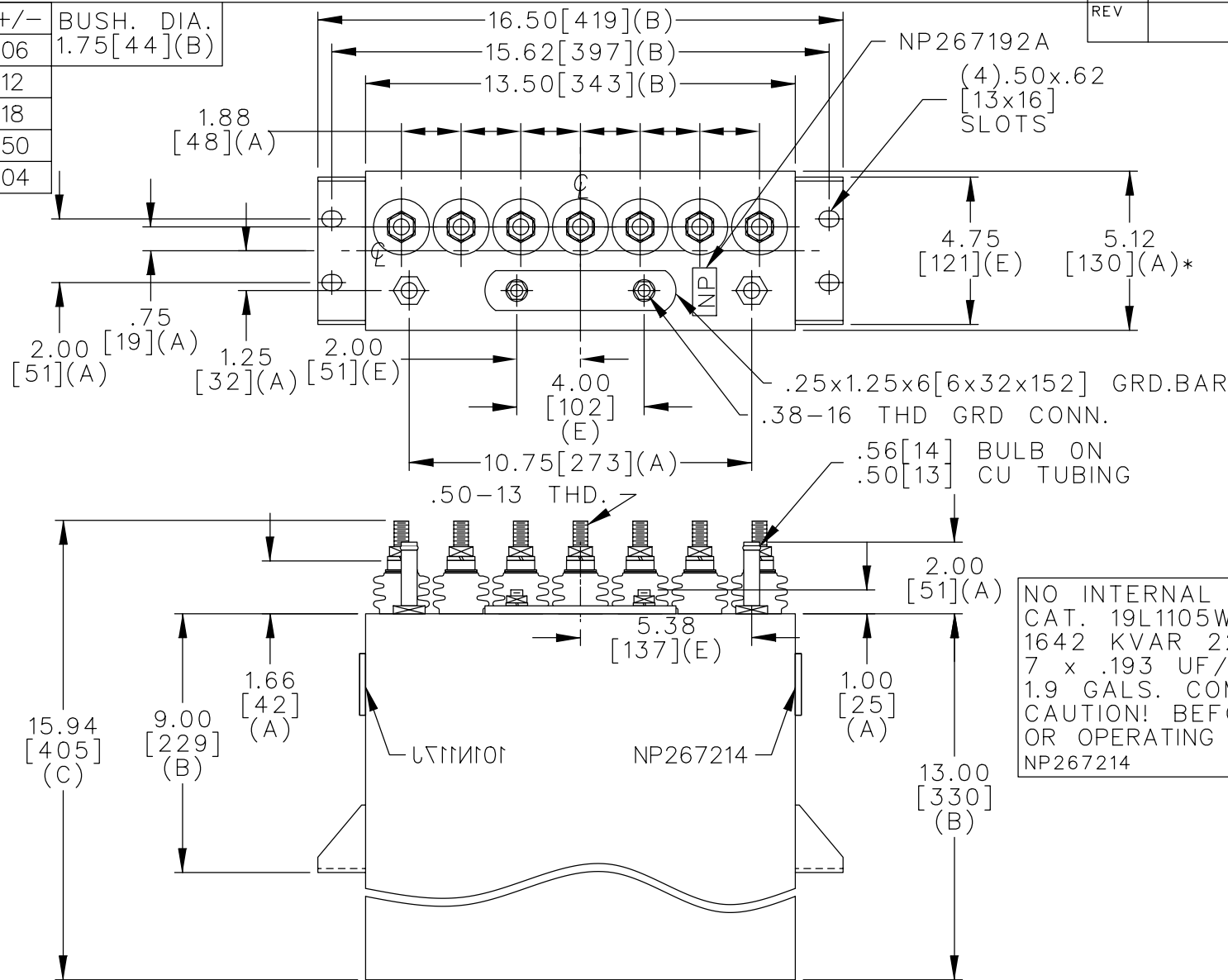
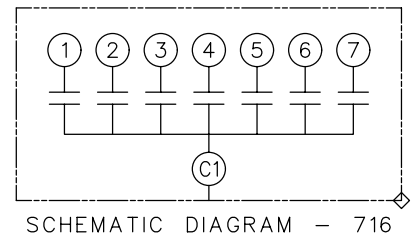


TOL	+/-	BUSH. DIA.
A	.06	1.75[44](B)
B	.12	
C	.18	
D	.50	
E	.04	



TERM	uF	kVAR
1	.193	234.6
2	.193	234.6
3	.193	234.6
4	.193	234.6
5	.193	234.6
6	.193	234.6
7	.193	234.6



NO INTERNAL DISCH RESISTORS  
 CAT. 19L1105WH3 SN  
 1642 KVAR 2200V 40000HZ 1PH  
 7 x .193 UF/TAP  
 1.9 GALS. COMBUSTIBLE LIQUID  
 CAUTION! BEFORE INSTALLING  
 OR OPERATING READ GEH-2733  
 NP267214

\* UP TO +.50[13] CASE BULGE

MAX. TERMINAL TIGHTENING TORQUE 15 FT-LBS

NP267192A

	CAPACITOR & POWER PROTECTION FORT EDWARD, N.Y., U.S.A.		SIZE <b>A</b>	OUTLINE 19L1105WH3	SHEET 2 CONT. ON -
	DRAWN E.McGINN	NOV. 5, 1997	SCALE		
ISSUED					DISTR TO