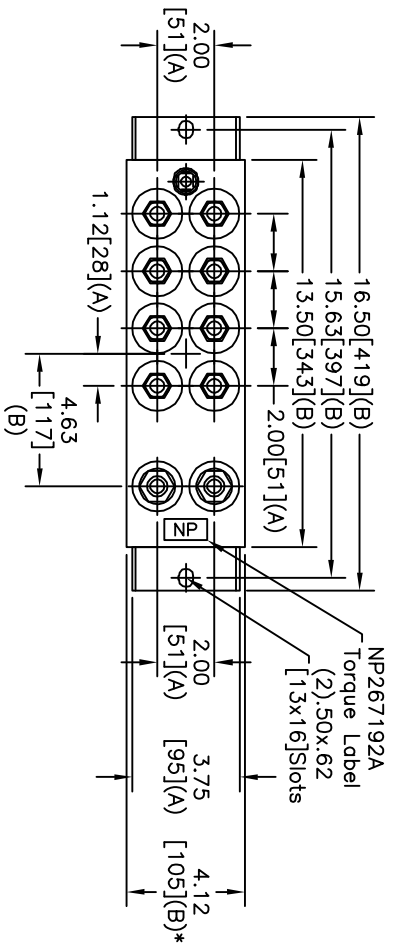
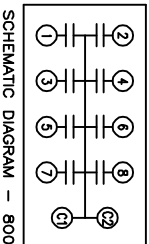
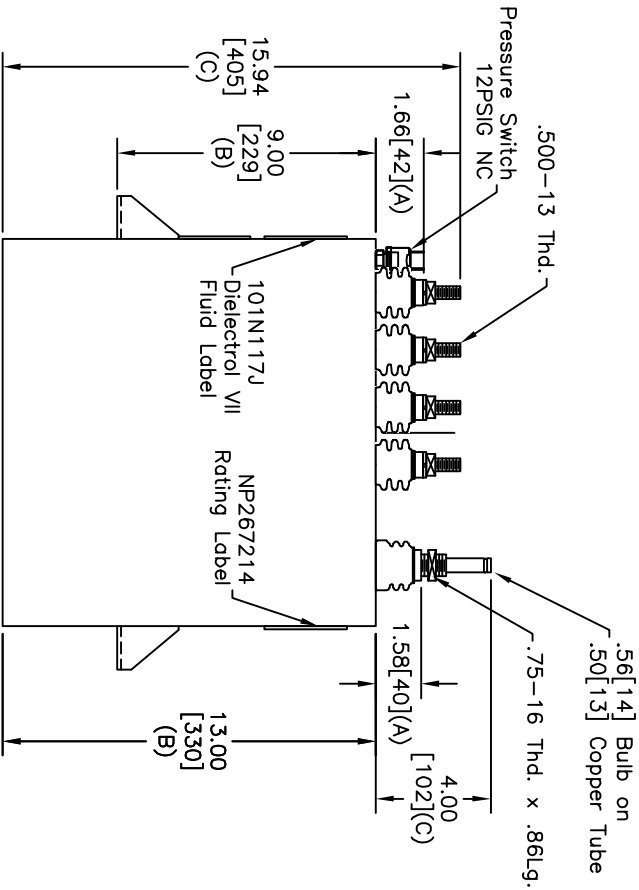


TOL	+/-
A	.06
B	.12
C	.18
D	.50
E	.04
BUSH, DIA	1.75[44](B)



TERM	UF	KVAR
1	7.64	375
2	7.64	375
3	7.64	375
4	7.64	375
5	7.64	375
6	7.64	375
7	7.64	375
8	7.64	375



NO INTERNAL DISCH RESISTORS  
 CAT. 19L1107WH4 SN  
 3000KVAR 1250V 5000HZ 1PH  
 8x7.64UF/TAP  
 1.5 GAL. COMBUSTIBLE LIQUID  
 CAUTION! BEFORE INSTALLING OR  
 OPERATING READ GEH-2733  
 MADE IN USA  
 NP267214

- NOTES:  
 1. Maximum terminal tightening torque  
 .50-13 thd. 15 ft-lbs. 20.3 N-m  
 .75-16 thd. 25 ft-lbs. 33.9 N-m  
 2. Minimum water flow 1 GPM (3.8 l/m)

REV	DESCRIPTION	DATE	APPROVED
1	RETRACE	12/15/2006	BTR

\* UP TO +.50[13]  
 CASE BULGE  
 MAX. TERMINAL  
 TIGHTENING TORQUE  
 15 FT-LBS.  
 NP267192A

<b>GE ENERGY</b> <b>FORT EDWARD, N.Y., U.S.A.</b>	
DRAWN	E.McGinn
ISSUED	
DATE	12/9/1997
DATE	12/10/1997

SIZE	A
SCALE	WC15
SHEET	2
CONT	ON

# OUTLINE

## 19L1107WH4