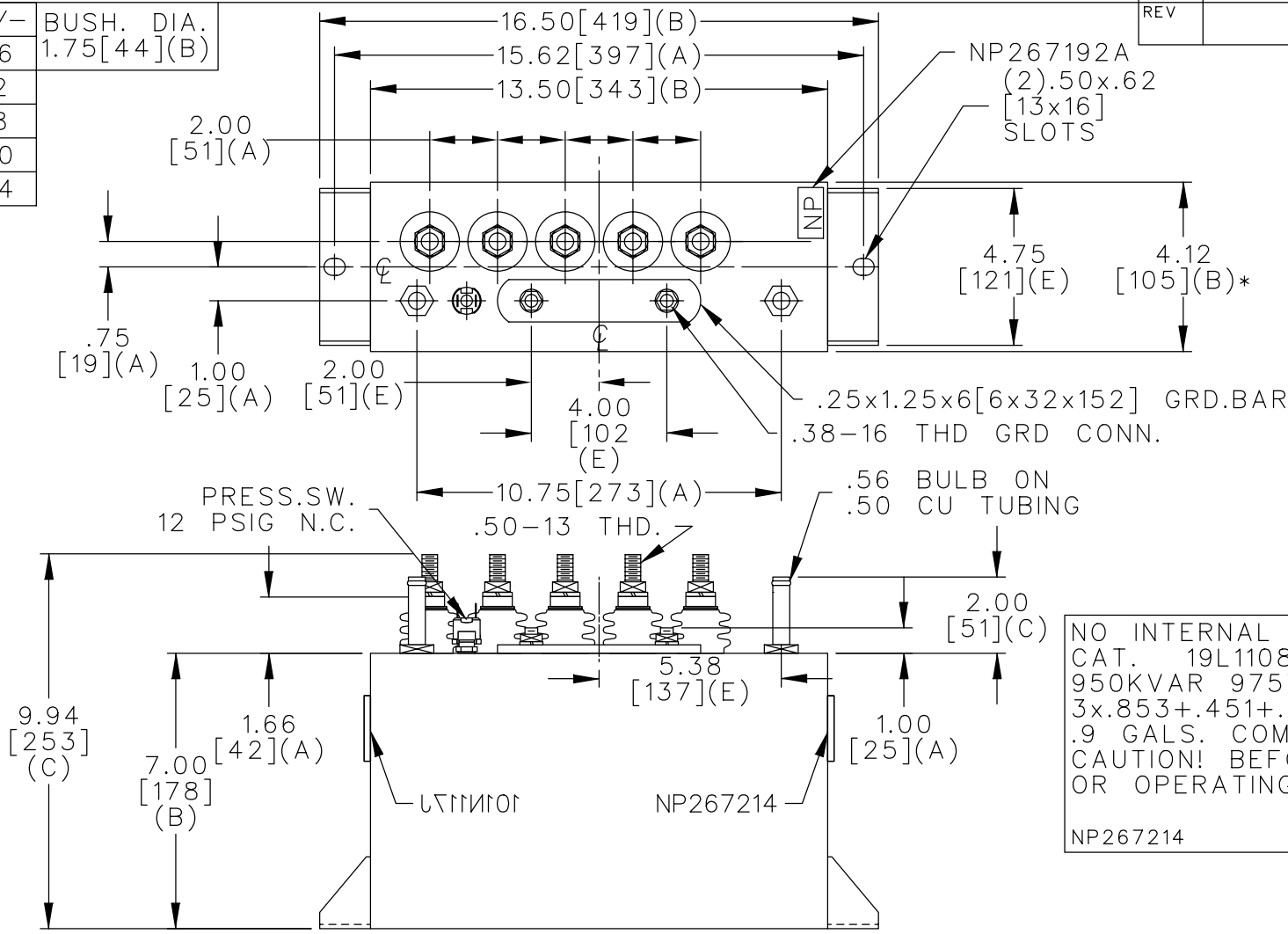
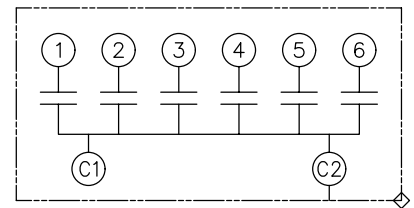


TOL	+/-	BUSH. DIA.
A	.06	1.75[44](B)
B	.12	
C	.18	
D	.50	
E	.04	



TERM	uF	kVAR
1	0.853	254.8
2	0.853	254.8
3	0.853	254.8
4	0.451	134.7
5	0.170	51.0



SCHEMATIC DIAGRAM - 601

NO INTERNAL DISCH RESISTORS
 CAT. 19L1108WH4 SN
 950KVAR 975V 50KHZ 1PH
 3x.853+.451+.170 UF/TAP
 .9 GALS. COMBUSTIBLE LIQUID
 CAUTION! BEFORE INSTALLING
 OR OPERATING READ GEH-2733
 NP267214

* UP TO +.50
 CASE BULGE

MAX. TERMINAL
 TIGHTENING TORQUE
 15 FT-LBS

NP267192A

	CAPACITOR & POWER PROTECTION FORT EDWARD, N.Y., U.S.A.		SIZE A	OUTLINE 19L1108WH4	
	DRAWN E.McGINN	MAY 20, 1998	SCALE		
ISSUED			SHEET 2	CONT. ON -	DISTR TO