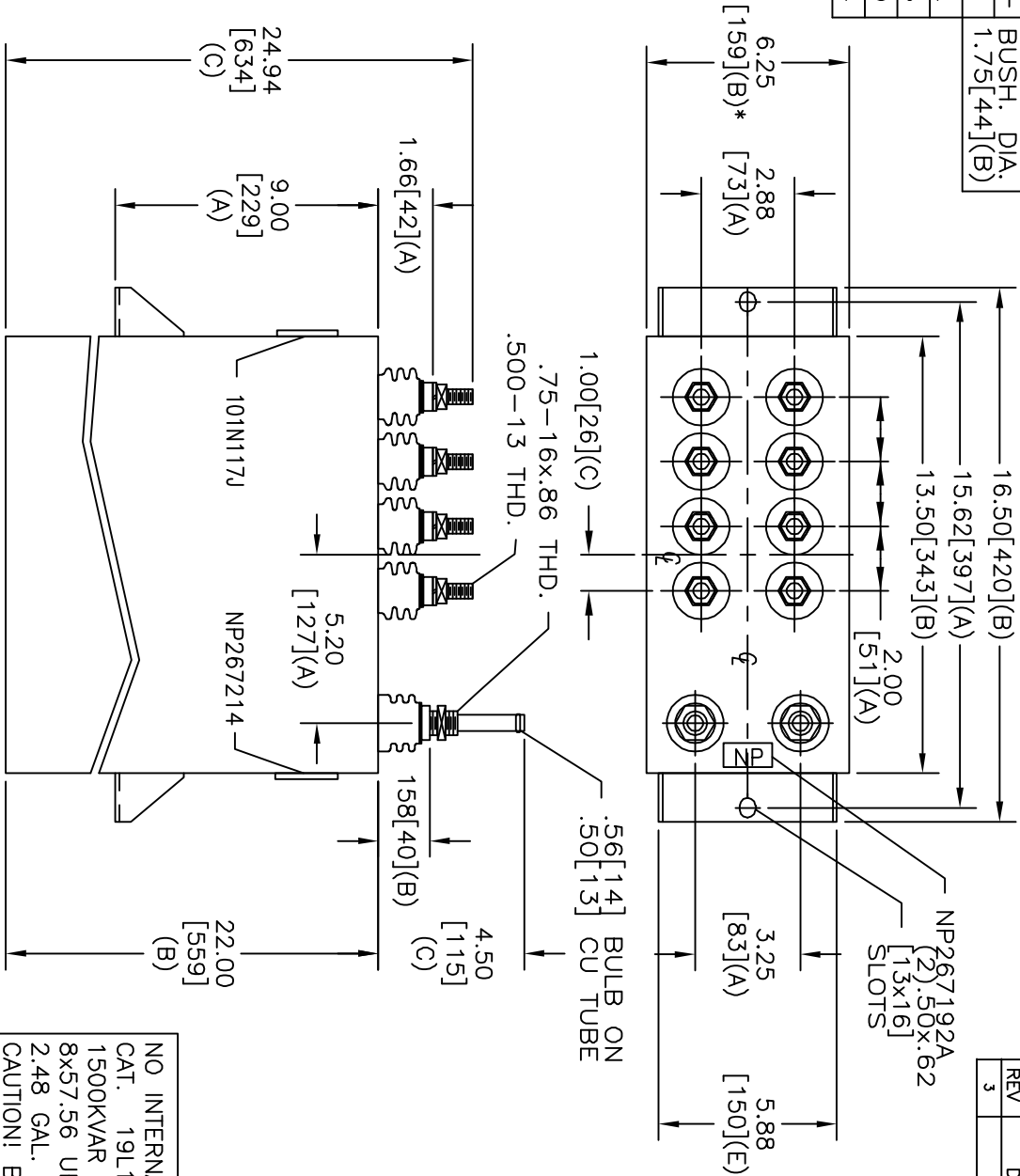
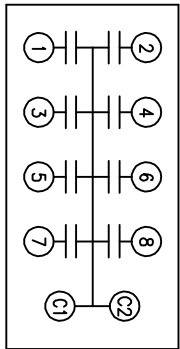


TOL	+/-	BUSH. DIA.
A	.06	1.75[.44](B)
B	.12	
C	.18	
D	.50	
E	.04	



SIZE	DWG NO	SHT	REV
A	19L1109WH3	2	3
REV	DESCRIPTION	DATE	APPROVED
3	UPDATE	6/23/04	BTR

TERM	UF	KVAR
1	57.56	187.5
2	57.56	187.5
3	57.56	187.5
4	57.56	187.5
5	57.56	187.5
6	57.56	187.5
7	57.56	187.5
8	57.56	187.5



SCHEMATIC DIAGRAM - 800

NO INTERNAL DISCH RESISTORS
 CAT. 19L1109WH3 SN
 1500KVAR 720V 1000HZ 1PH
 8x57.56 UF/TAP
 2.48 GAL. COMBUSTIBLE LIQUID
 CAUTION! BEFORE INSTALLING OR
 OPERATING READ GEH-2733

NP267214

* UP TO +.50[13]
 CASE BULGE

MAX. TERMINAL
 TIGHTENING TORQUE
 15 FT-LBS

NP267192A

INDUSTRIAL SYSTEMS FORT EDWARD, N.Y., U.S.A.	
ISSUED	DATE
4-2-98	4-2-98
4-8-98	4-8-98

SIZE	UNIT WEIGHT
A	98 / 45 LB / KG

OUTLINE	
19L1109WH3	
SHEET	CONT
2	3

DISTR. TO