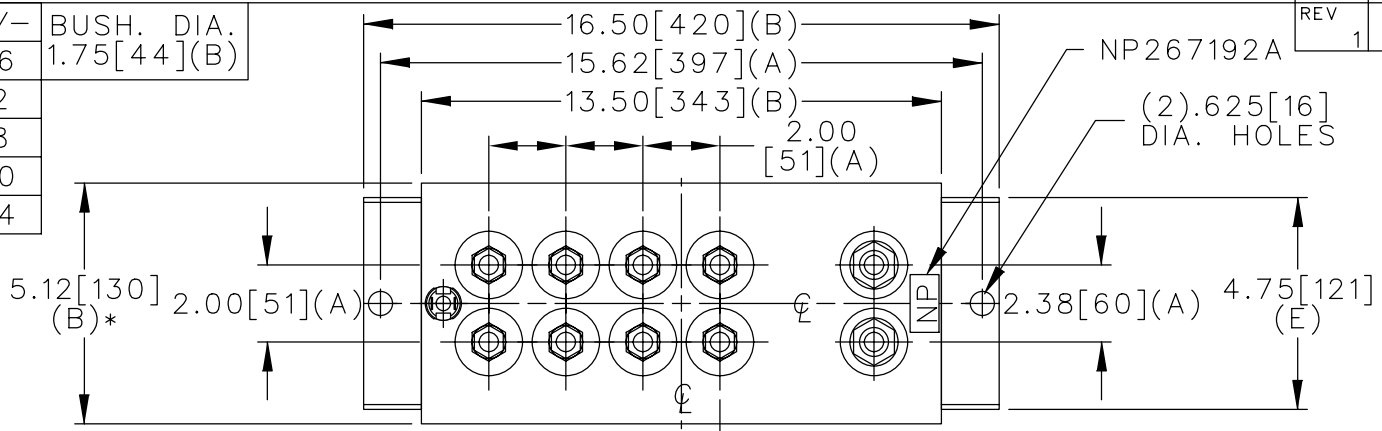
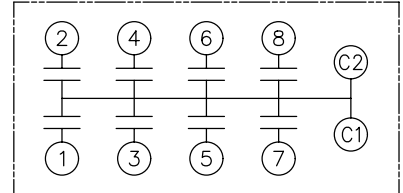


TOL	+/-	BUSH. DIA.
A	.06	1.75[44](B)
B	.12	
C	.18	
D	.50	
E	.04	

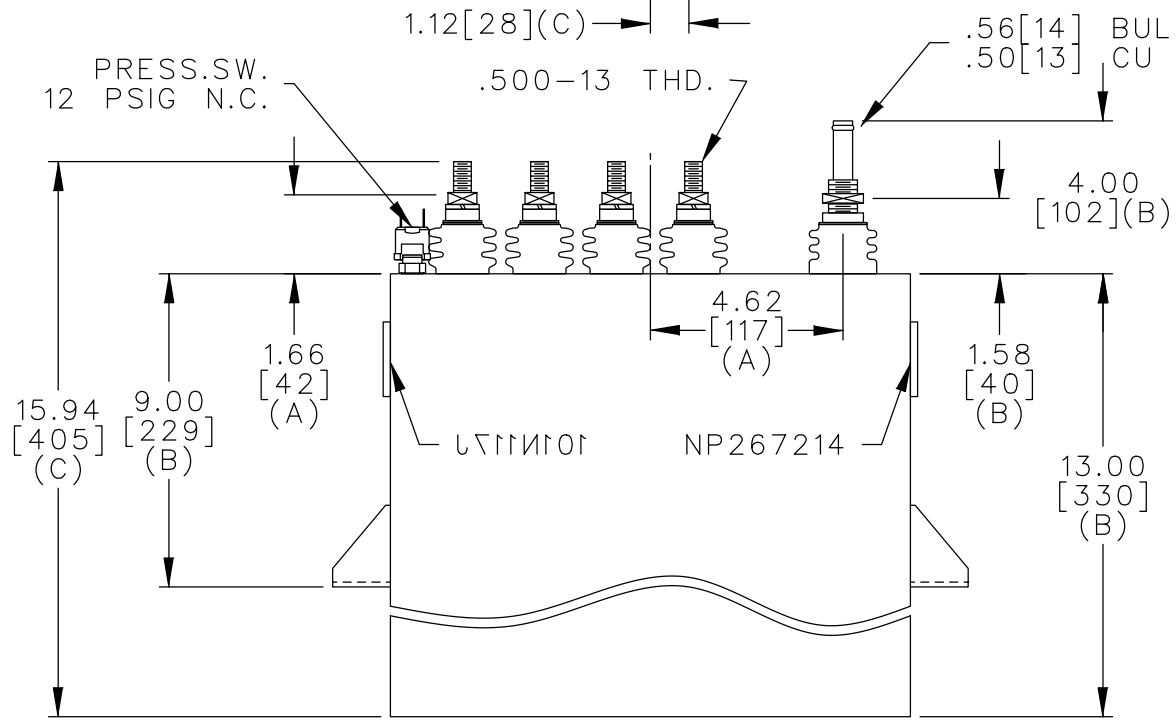


TERM	uF	kVAR
1	5.97	240
2	5.97	240
3	5.97	240
4	5.97	240
5	5.97	240
6	5.97	240
7	5.97	240
8	5.97	240



SCHMATIC DIAGRAM - 800

NO INTERNAL DISCH RESISTORS  
 CAT 19L1112WH4 SN  
 1920KVAR 800V 10000HZ 1PH  
 8x5.97 UF/TAP  
 2.2 GAL COMBUSTIBLE LIQUID  
 CAUTION! BEFORE INSTALLING OR  
 OPERATING READ GEH-2733  
 NP267214



\* UP TO +.50[13]  
CASE BULGE

MAX. TERMINAL  
TIGHTENING TORQUE  
15 FT-LBS

NP267192A

	CAPACITOR & POWER PROTECTION FORT EDWARD, N.Y., U.S.A.		SIZE <b>A</b>	<b>OUTLINE</b> <b>19L1112WH4</b>	SHEET 2 CONT. ON -
	DRAWN E.McGINN MAY 13, 1998	ISSUED 5-27-98	SCALE		