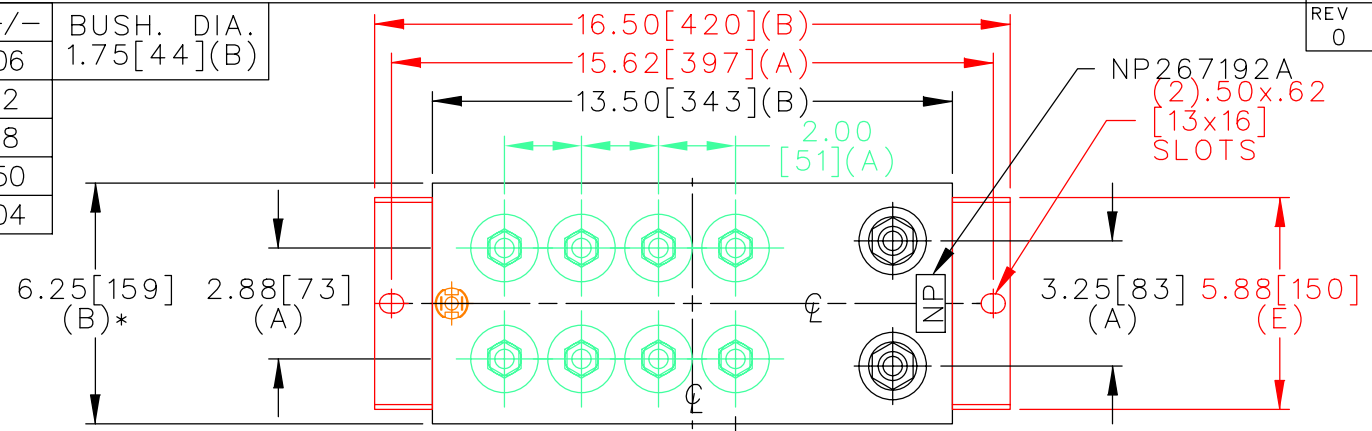
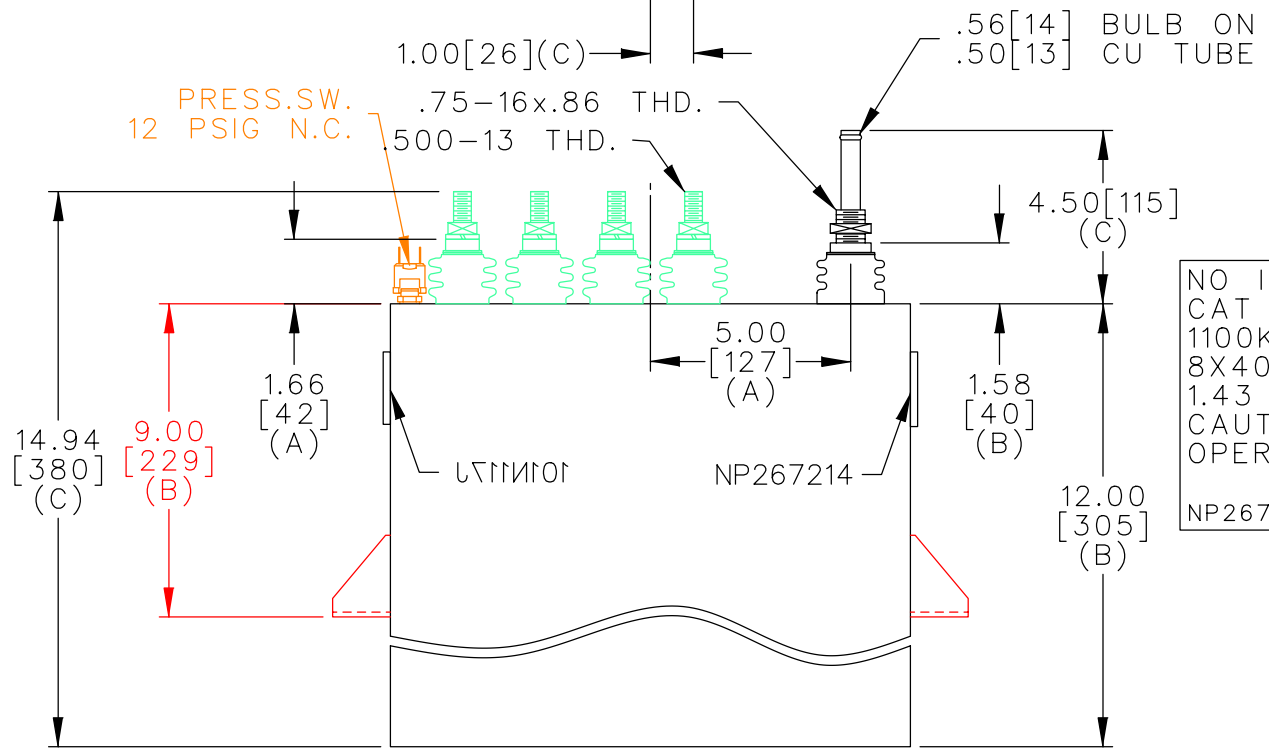
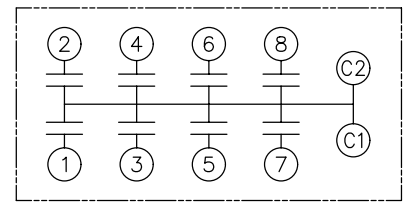


TOL	+/-	BUSH. DIA.
A	.06	1.75[44](B)
B	.12	
C	.18	
D	.50	
E	.04	



TERM	uF	kVAR
1	40.53	137.5
2	40.53	137.5
3	40.53	137.5
4	40.53	137.5
5	40.53	137.5
6	40.53	137.5
7	40.53	137.5
8	40.53	137.5



NO INTERNAL DISCH RESISTORS
 CAT 19L1122WH4 SN
 1100KVAR 600V 1500HZ 1PH
 8X40.53 UF/TAP
 1.43 GAL COMBUSTIBLE LIQUID
 CAUTION! BEFORE INSTALLING OR
 OPERATING READ GEH-2733
 NP267214

* UP TO +.50[13] CASE BULGE

MAX. TERMINAL TIGHTENING TORQUE 15 FT-LBS

NP267192A

<p>CAPACITOR & POWER PROTECTION FORT EDWARD, N.Y., U.S.A.</p>	SIZE A	UNIT WEIGHT 62 / 28 LB/KG	<h1>OUTLINE</h1> <h2>19L1122WH4</h2>	SHEET 2 CONT. 3 ON ON 3
	DRAWN 10/22/98 LRD 10/22/98	SCALE WC7 version		
ISSUED				