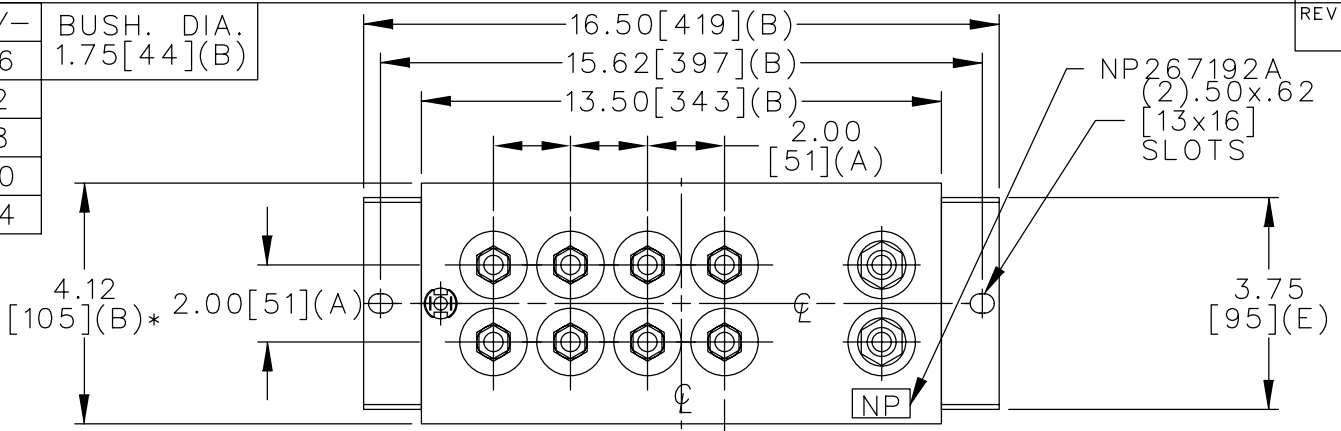
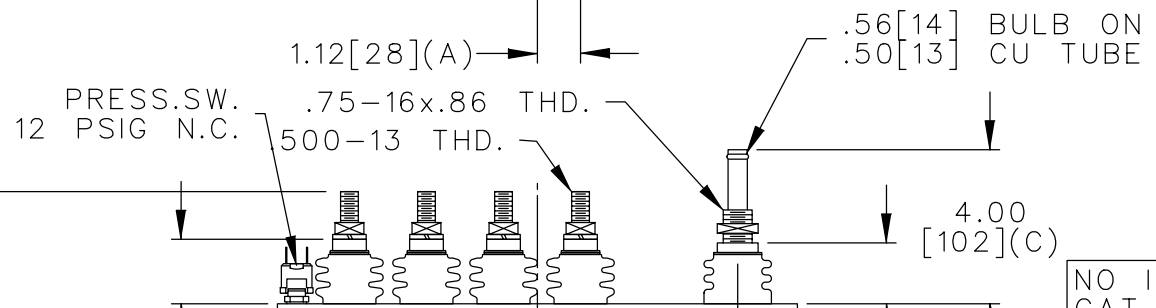
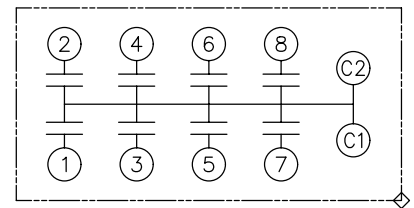


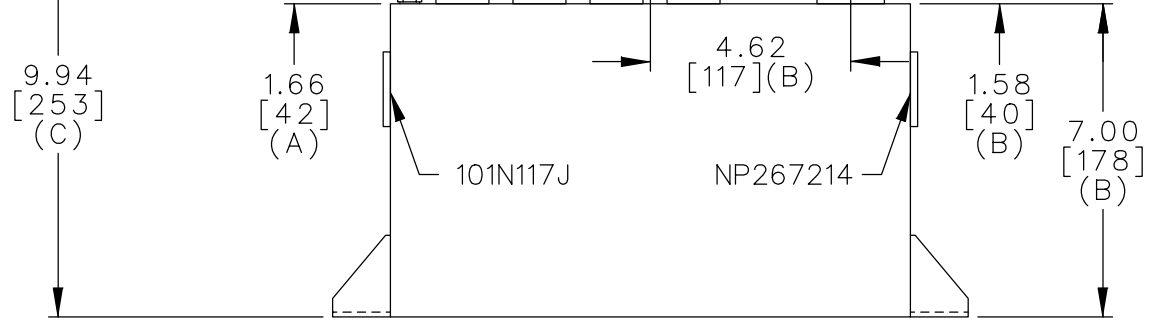
TOL	+/-	BUSH. DIA.
A	.06	1.75[44](B)
B	.12	
C	.18	
D	.50	
E	.04	



TERM	uF	kVAR
1	5.0	112.5
2	5.0	112.5
3	5.0	112.5
4	5.0	112.5
5	5.0	112.5
6	5.0	112.5
7	5.0	112.5
8	5.0	112.5



NO INTERNAL DISCH RESISTORS
 CAT. 19L1124WH4 SN
 1500AMPS 600VAC 10000HZ 1PH
 8x5.0 UF/TAP 50% DUTY CYCLE
 .9 GALS. COMBUSTIBLE LIQUID
 CAUTION! BEFORE INSTALLING OR
 OPERATING READ GEH-2733
 NP267214



* UP TO +.50[13] CASE BULGE

MAX. TERMINAL TIGHTENING TORQUE 15 FT-LBS

NP267192A

	CAPACITOR & POWER PROTECTION FORT EDWARD, N.Y., U.S.A.		SIZE A	OUTLINE 19L1124WH4	SHEET 2 CONT. ON -
	DRAWN E.McGINN	OCT. 21, 1998	SCALE		
ISSUED				DISTR TO	