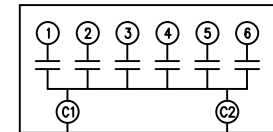
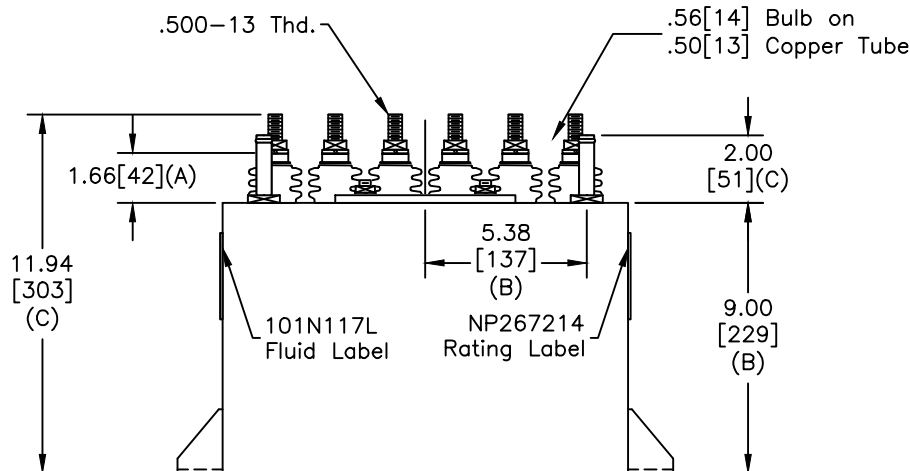
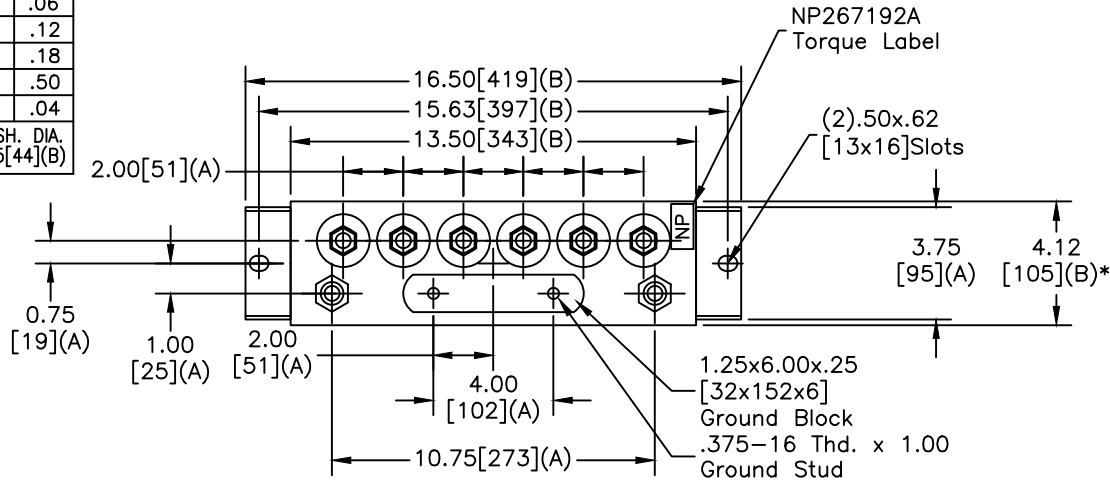


| TOL | +/- |
|------------|-------------|
| A | .06 |
| B | .12 |
| C | .18 |
| D | .50 |
| E | .04 |
| BUSH. DIA. | 1.75[44](B) |

| | | | |
|-----------|---------------------------|--------------------|-----------------|
| SIZE A | DWG NO 19L1132WH3 | SHT 2 | REV 1 |
| REV 1 | DESCRIPTION UPDATE NPS | DATE 12/10/2012 | APPROVED JBC |

| TERM | uF | kVAR |
|------|------|-------|
| 1 | 0.83 | 167.5 |
| 2 | 0.83 | 167.5 |
| 3 | 0.83 | 167.5 |
| 4 | 0.83 | 167.5 |
| 5 | 0.83 | 167.5 |
| 6 | 0.83 | 167.5 |



SCHEMATIC DIAGRAM - 601

NO INTERNAL DISCH RESISTORS
CAT. 19L1132WH3 SN
1005KVAR 800V 5000HZ 1PH
6x0.83 UF/TAP
1.39 GAL. COMBUSTIBLE LIQUID
CAUTION! BEFORE INSTALLING OR
OPERATING READ GEH-2733

MADE IN USA

NP267214

NOTES:

- Maximum terminal tightening torque
.50-13 thd. 15 ft-lbs. 20.3 N-m
.75-16 thd. 25 ft-lbs. 33.9 N-m
- Minimum water flow 1 GPM (3.8 l/m)

* UP TO +.50[13] CASE BULGE

MAX. TERMINAL TIGHTENING TORQUE
15 FT-LBS.

NP267192A

| | | | | | |
|--------|--|-------------------|-----------|-----------------------|-----------------------|
| | GE ENERGY FORT EDWARD, N.Y., U.S.A. | | SIZE A | Est Weight 30 lbs. | OUTLINE 19L1132WH3 |
| | DRAWN E.McGINN | DATE 1/11/1999 | SCALE | | |
| ISSUED | DATE 1/11/1999 | | | | |

DISTR. TO