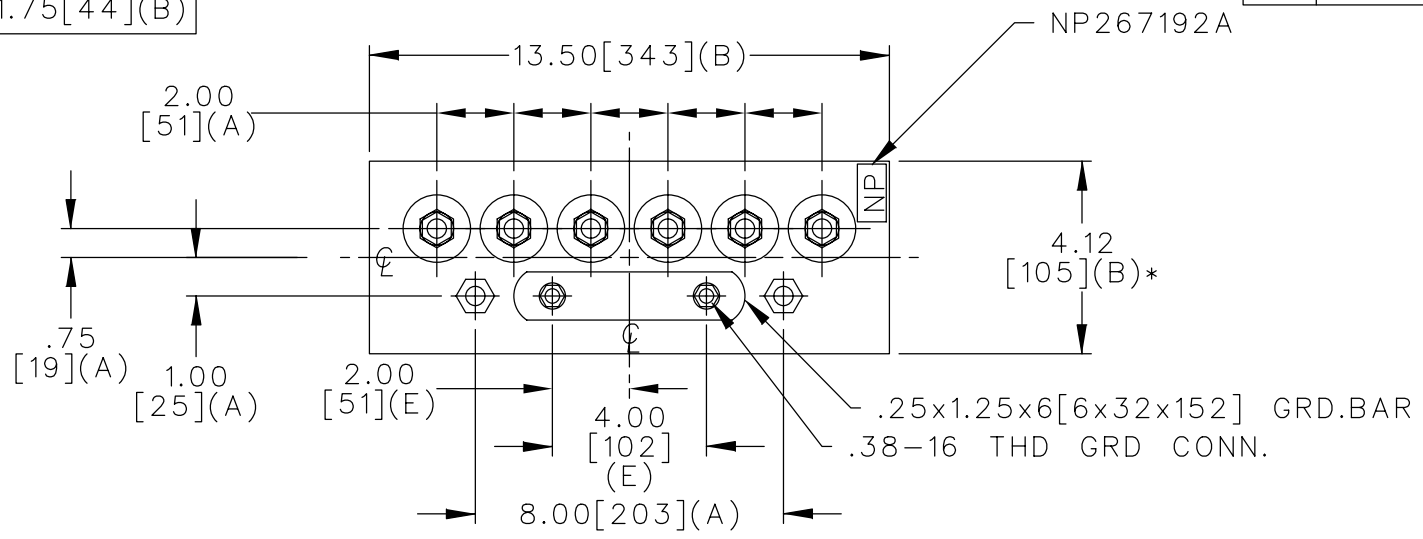
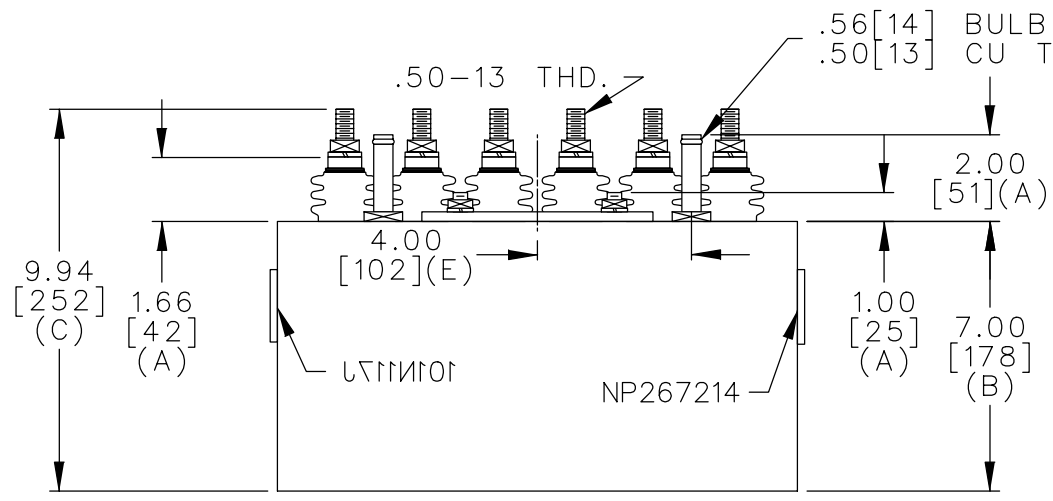
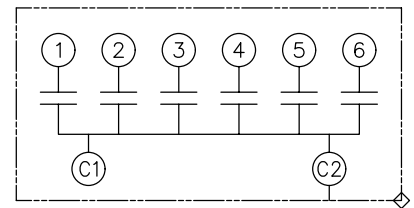


TOL	+/-	BUSH. DIA.
A	.06	1.75[44](B)
B	.12	
C	.18	
D	.50	
E	.04	



TERM	uF	kVAR
1	1.49	5.77
2	2.99	11.5
3	5.98	23.1
4	11.96	46.1
5	17.9	69.2
6	17.9	69.2



NO INTERNAL DISCH RESISTORS
 CAT. 19L1133WH1 SN
 225KVAR 800V 960HZ 1PH
 1.5+3+6+12+2x17.9 UF/TAP
 0.9 GALS. COMBUSTIBLE LIQUID
 CAUTION! BEFORE INSTALLING OR
 OPERATING READ GEH-2733

NP267214

* UP TO +.50[13]
 CASE BULGE

MAX. TERMINAL
 TIGHTENING TORQUE
 15 FT-LBS

NP267192A

	CAPACITOR & POWER PROTECTION FORT EDWARD, N.Y., U.S.A.		SIZE A	OUTLINE 19L1133WH1		SHEET 2	CONT. ON -
	DRAWN E.McGINN	JAN. 26, 1999	SCALE				
ISSUED							