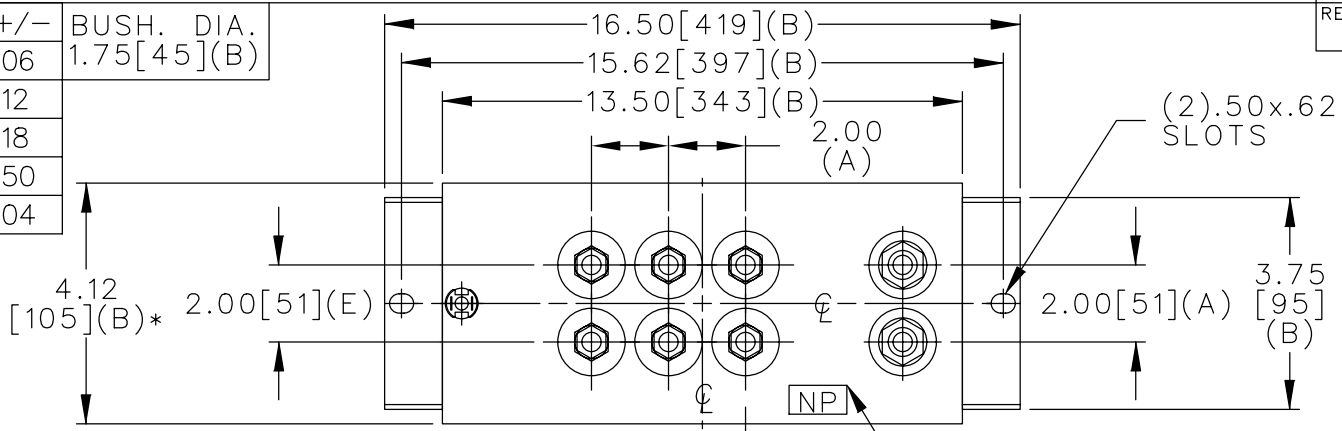
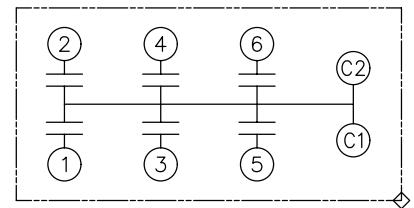


TOL	+/-	BUSH. DIA.
A	.06	1.75[45](B)
B	.12	
C	.18	
D	.50	
E	.04	



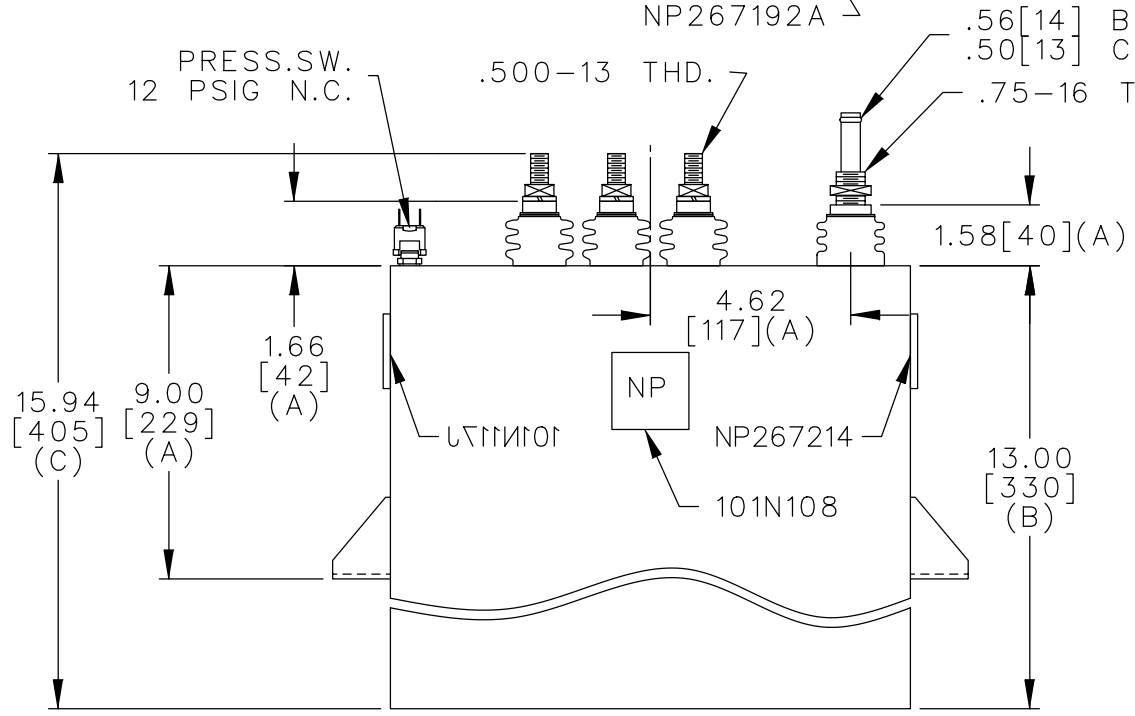
TERM	uF	kVAR
1	17.5	317
2	17.5	317
3	17.5	317
4	17.5	317
5	17.5	317
6	17.5	317



PRESS.SW.  
12 PSIG N.C.

.500-13 THD.

.56[14] BULB ON  
.50[13] CU TUBE  
.75-16 THD.



NO INTERNAL DISCH RESISTORS  
CAT.19L1156WH4 SN  
1900KVAR 1200V 2000HZ 1PH  
6x17.5 UF/TAP  
1.5 GALS. COMBUSTIBLE LIQUID  
CAUTION! BEFORE INSTALLING OR  
OPERATING READ GEH-2733  
NP267214

\* UP TO +.50  
CASE BULGE

MAX. TERMINAL  
TIGHTENING TORQUE  
15 FT-LBS

NP267192A

	CAPACITOR & POWER PROTECTION FORT EDWARD, N.Y., U.S.A.		SIZE <b>A</b>	<b>OUTLINE</b> <b>19L1156WH4</b>	SHEET 2 CONT. ON -
	DRAWN E.McGINN	NOV. 7, 2000	SCALE		