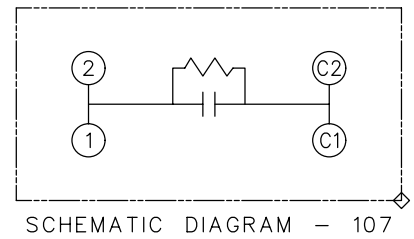
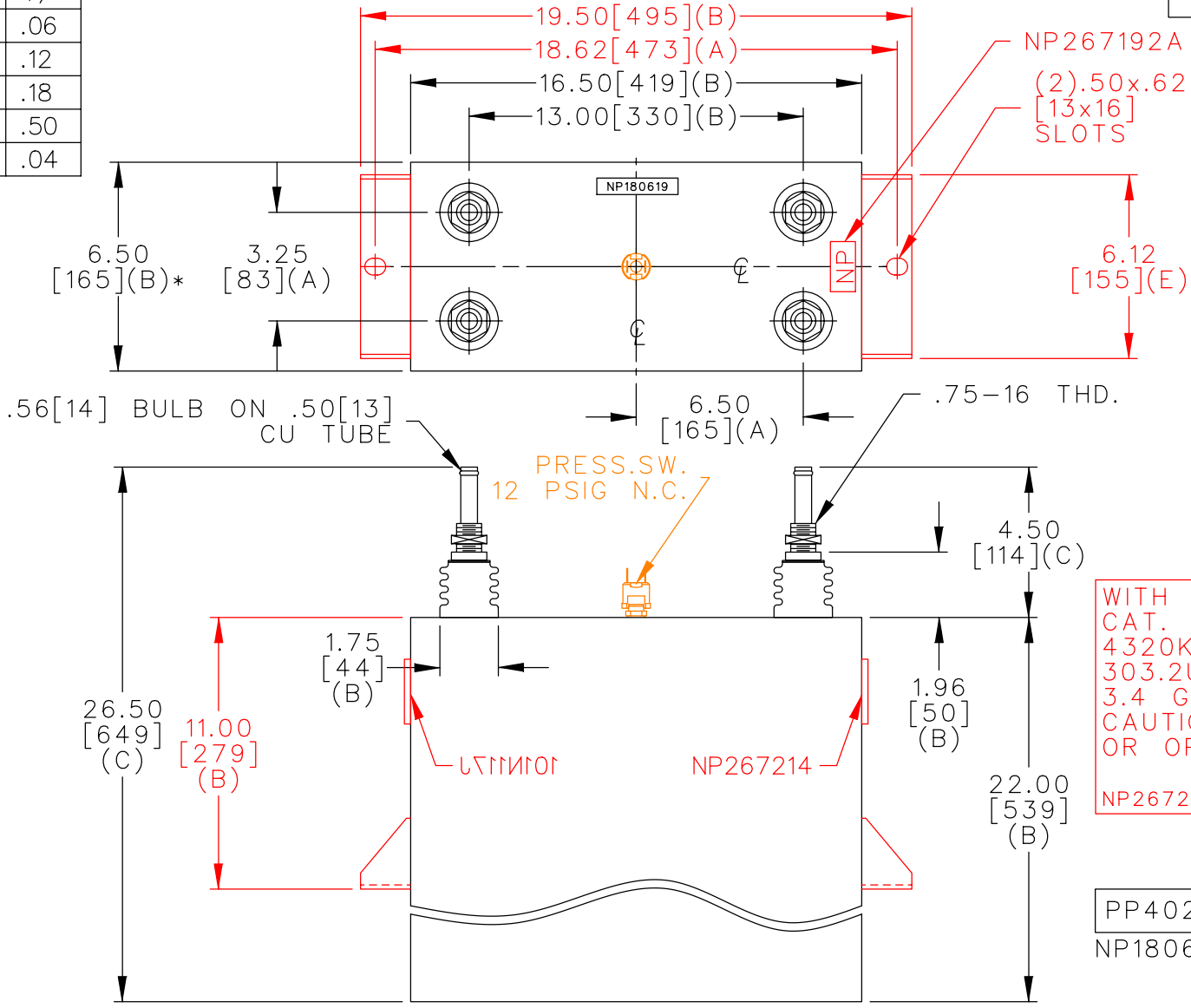


TOL	+/-
A	.06
B	.12
C	.18
D	.50
E	.04



WITH INTERNAL DISCH RESISTORS
 CAT. SN
 4320KVAR 1800V 700HZ 1PH
 303.2UF/TAP
 3.4 GALS COMBUSTIBLE LIQUID
 CAUTION! BEFORE INSTALLING
 OR OPERATING READ GEH-2733
 NP267214

PP402-436
 NP180619

* UP TO +.50 [13]
 CASE BULGE

MAX. TERMINAL
 TIGHTENING TORQUE
 15 FT-LBS

NP267192A

	CAPACITOR & POWER PROTECTION FORT EDWARD, N.Y., U.S.A.		SIZE A	OUTLINE 19L1159WP4		SHEET 2 CONT. 3 ON 3
	DRAWN E.McGINN	JAN. 15, 2001	SCALE			
ISSUED					DISTR TO	