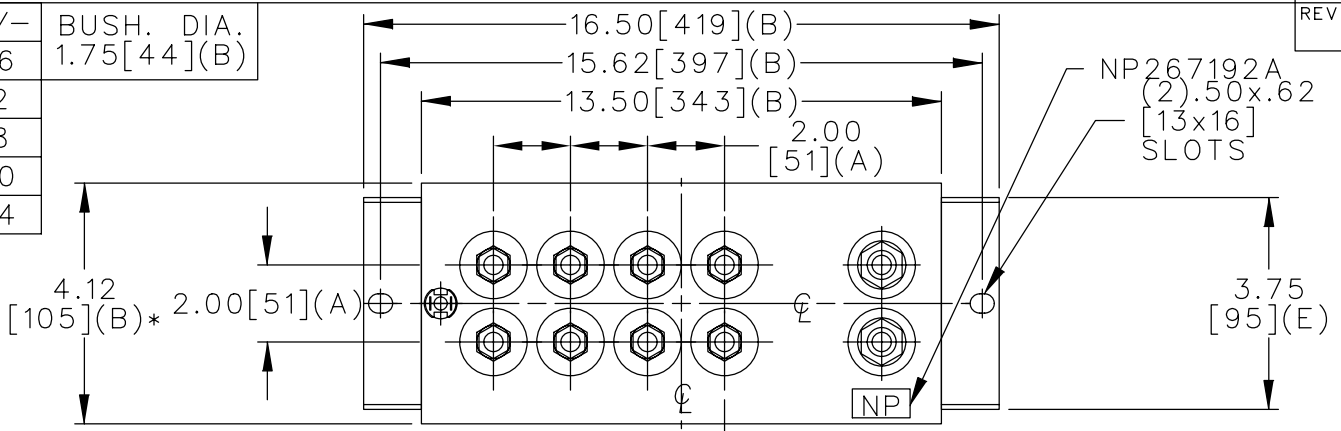
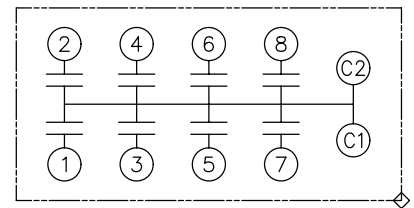


TOL	+/-	BUSH. DIA.
A	.06	1.75[44](B)
B	.12	
C	.18	
D	.50	
E	.04	

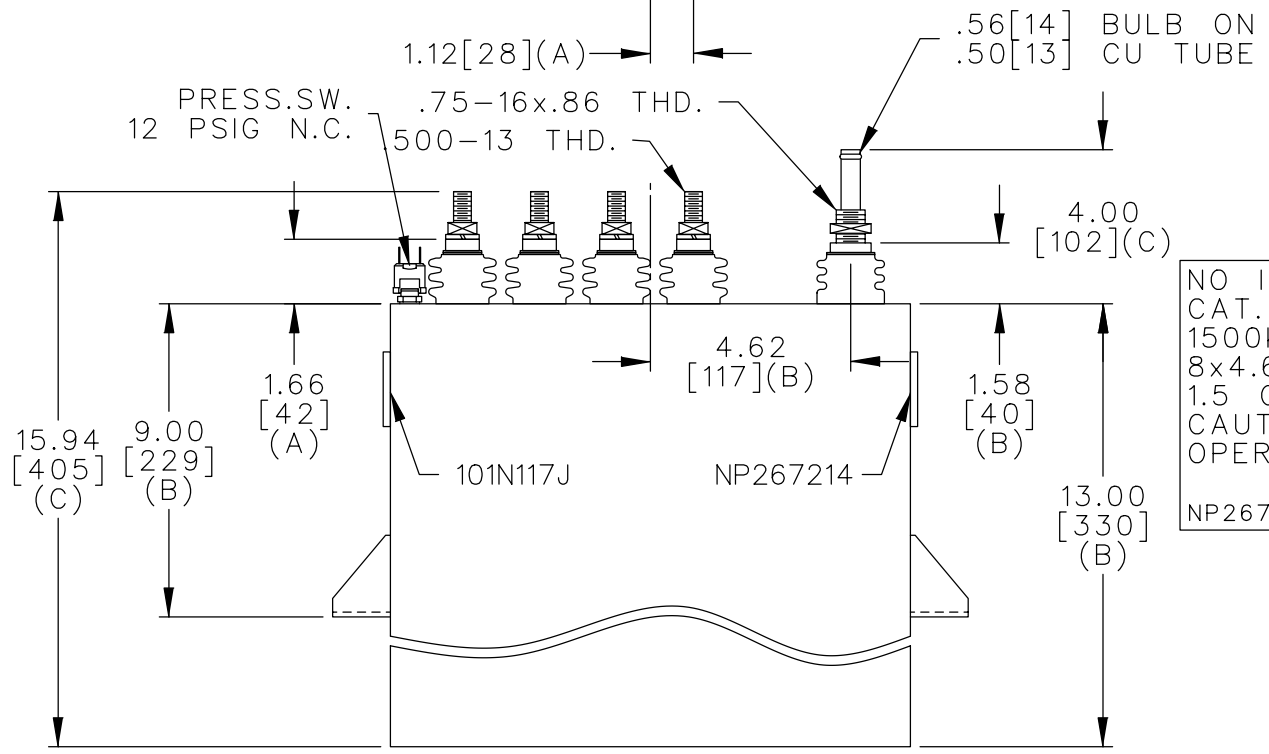


TERM	uF	kVAR
1	4.66	187.5
2	4.66	187.5
3	4.66	187.5
4	4.66	187.5
5	4.66	187.5
6	4.66	187.5
7	4.66	187.5
8	4.66	187.5



SCHEMATIC DIAGRAM - 800

NO INTERNAL DISCH RESISTORS
 CAT. 19L1160WH4 SN
 1500KVAR 800V 10000HZ 1PH
 8x4.66 UF/TAP
 1.5 GALS. COMBUSTIBLE LIQUID
 CAUTION! BEFORE INSTALLING OR
 OPERATING READ GEH-2733
 NP267214



* UP TO +.50[13] CASE BULGE

MAX. TERMINAL TIGHTENING TORQUE 15 FT-LBS

NP267192A

	CAPACITOR & POWER PROTECTION FORT EDWARD, N.Y., U.S.A.		SIZE A	OUTLINE 19L1160WH4	SHEET 2 CONT. ON -
	DRAWN E.McGINN	JAN. 16, 2001	SCALE		
ISSUED					

DISTR TO