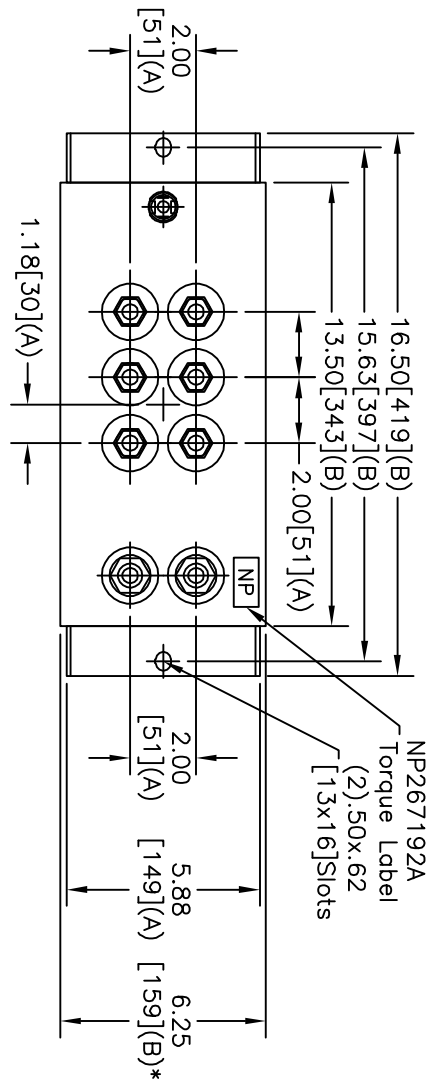
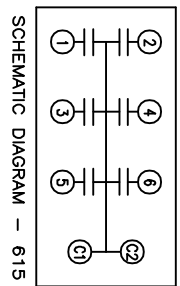
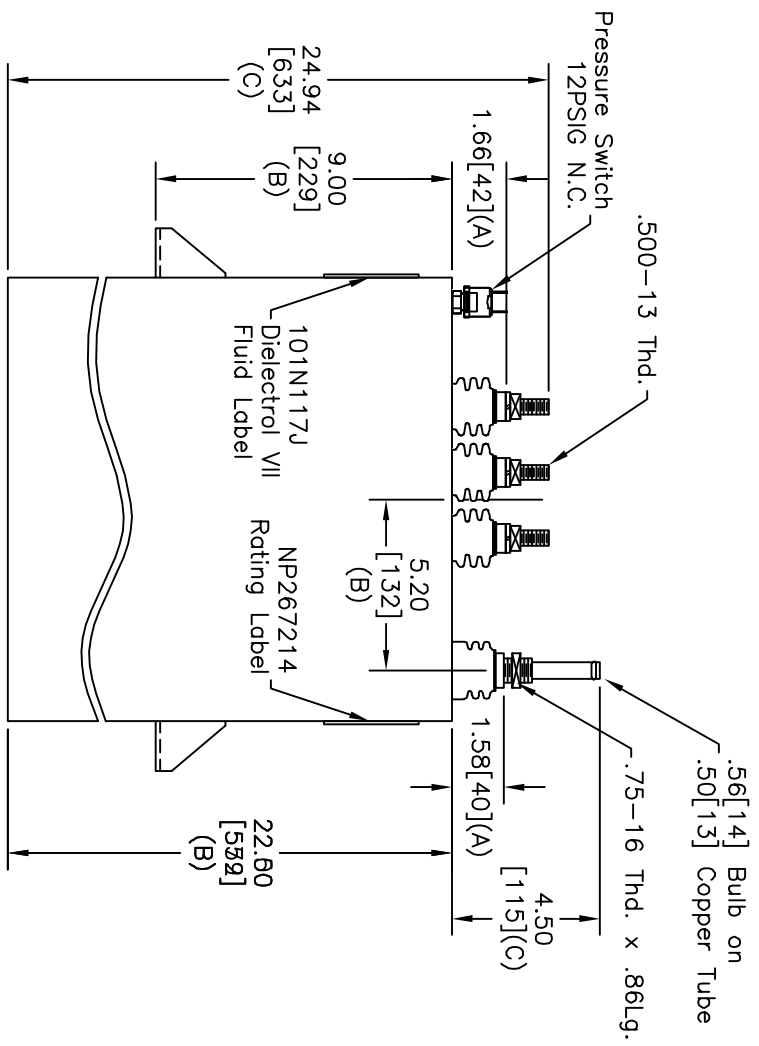


| TOL | +/- |
|------------|--------------|
| A | .06 |
| B | .12 |
| C | .18 |
| D | .50 |
| E | .04 |
| BUSH, DIA. | 1.75[.44](B) |



| TERM | UF |
|------|-----|
| 1 | 200 |
| 2 | 200 |
| 3 | 200 |
| 4 | 200 |
| 5 | 200 |
| 6 | 200 |



NO INTERNAL DISCH RESISTORS
 CAT. 19L1162WH4 SN
 900VDC 1800 ARMS MAX
 6x200 UF/TAP
 2.2 GAL. COMBUSTIBLE LIQUID
 CAUTION! BEFORE INSTALLING OR
 OPERATING READ GEH-2733
 MADE IN USA
 NP267214

* UP TO +.50[13]
 CASE BULGE
 MAX. TERMINAL
 TIGHTENING TORQUE
 15 FT.-LBS.
 NP267192A

| | |
|---|----------------|
| INDUSTRIAL SYSTEMS FORT EDWARD, N.Y., U.S.A. | |
| DRAWN | B ROSS |
| DATE | 3/13/2001 |
| ISSUED | DATE 3/21/2001 |

| | |
|----------|-----------|
| SIZE | A |
| SCALE | |
| SHEET | 2 |
| CONT | 3 |
| ON | |
| REV | |
| DATE | 8/24/2005 |
| APPROVED | BTR |

DISTR. TO