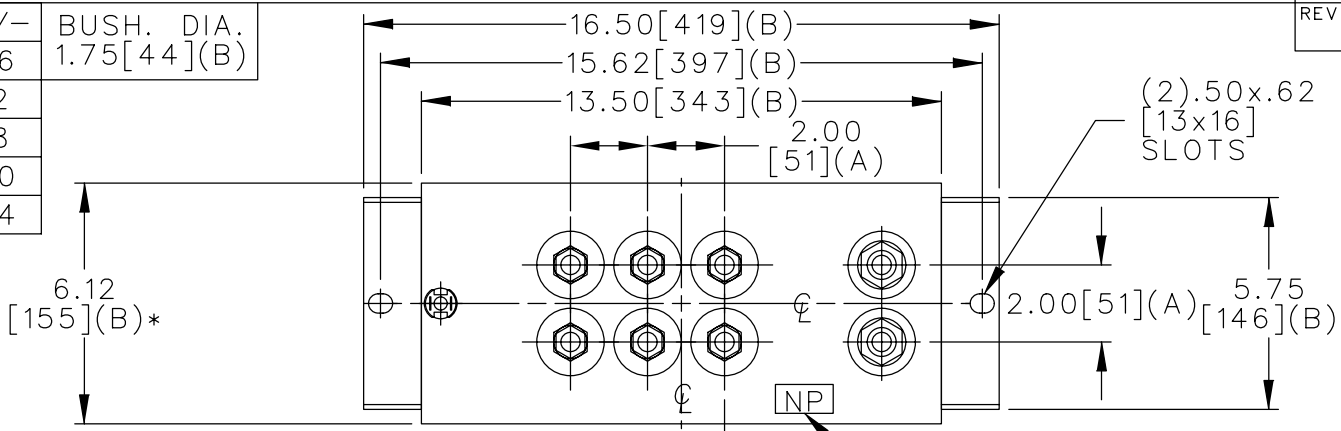
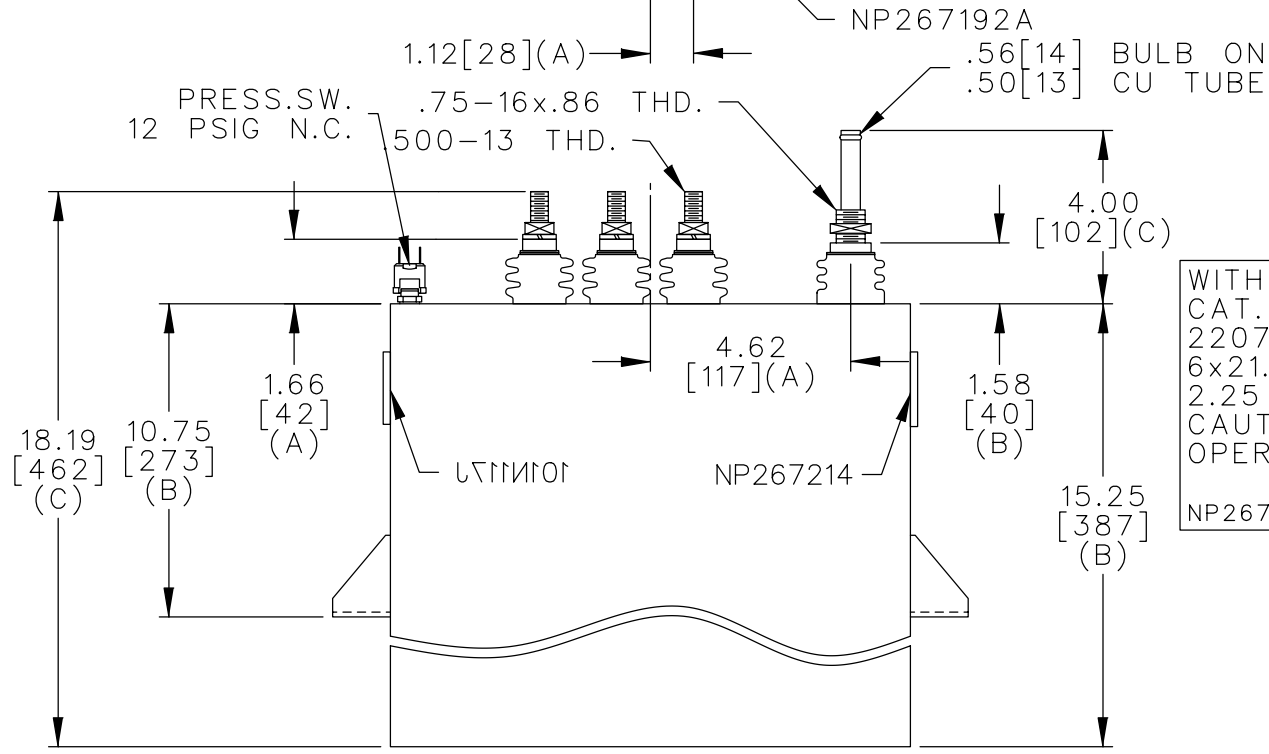
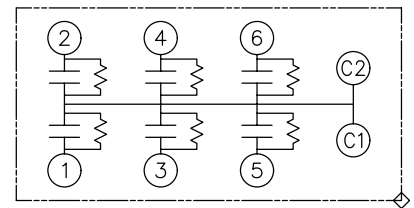


TOL	+/-	BUSH. DIA.
A	.06	1.75[44](B)
B	.12	
C	.18	
D	.50	
E	.04	



TERM	uF	kVAR
1	21.5	367.83
2	21.5	367.83
3	21.5	367.83
4	21.5	367.83
5	21.5	367.83
6	21.5	367.83



WITH INTERNAL DISCH RESISTORS  
 CAT. 19L1187WH4 SN  
 2207KVAR 1650V 1000HZ 1PH  
 6x21.5 UF/TAP  
 2.25 GALS. COMBUSTIBLE LIQUID  
 CAUTION! BEFORE INSTALLING OR  
 OPERATING READ GEH-2733  
 NP267214

\* UP TO +.50[13] CASE BULGE

MAX. TERMINAL TIGHTENING TORQUE 15 FT-LBS

NP267192A

	CAPACITOR & POWER PROTECTION FORT EDWARD, N.Y., U.S.A.		SIZE <b>A</b>	OUTLINE 19L1187WH4	SHEET 2 CONT. ON -
	DRAWN E.McGINN	NOV. 12, 2001	SCALE		
ISSUED					DISTR TO