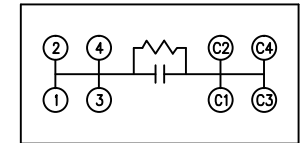
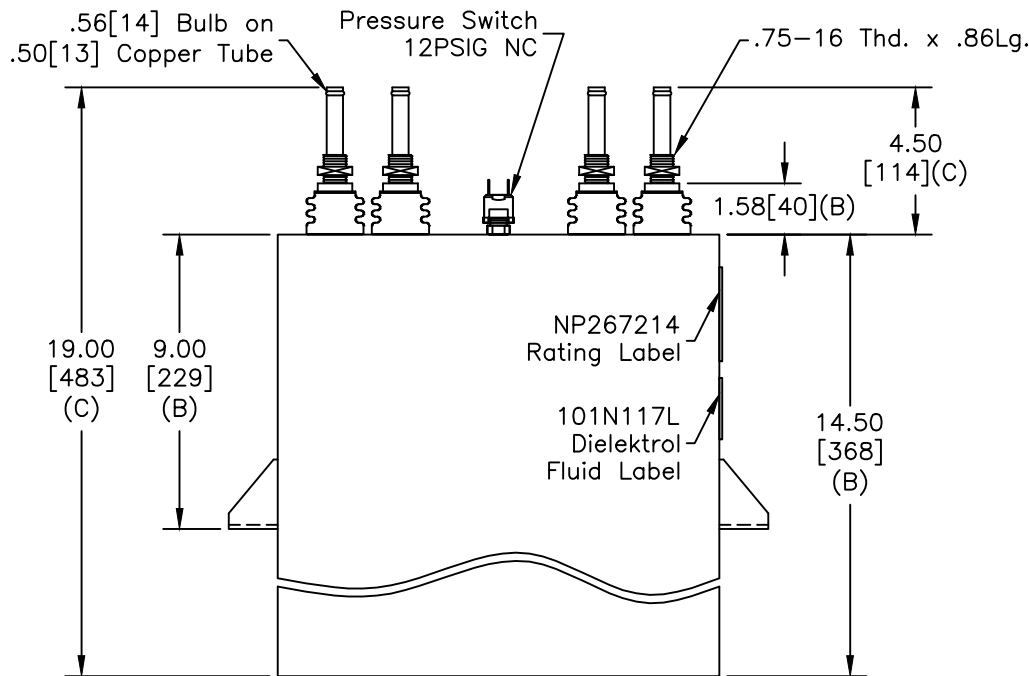
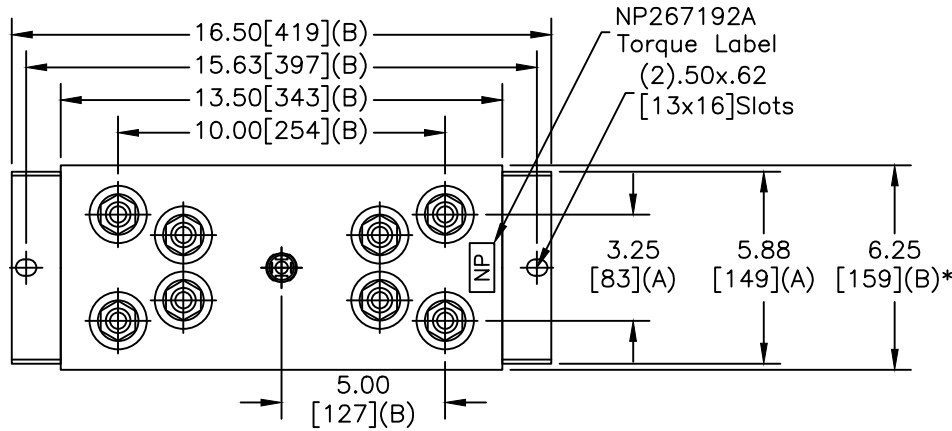


SIZE A	DWG NO 19L1193WH4	SHT 2	REV 2
REV 2	DESCRIPTION UPDATE BASED ORIG OUTLINE	DATE 9/28/11	APPROVED DMR

TOL	+/-
A	.06
B	.12
C	.18
D	.50
E	.04
BUSH. DIA.	1.75[44](B)



SCHEMATIC DIAGRAM - 117

CAPACITOR
WITH INTERNAL DISCHARGE RESISTORS

CAT. 19L1193WH4 SN
2443KVAR 900V 1000HZ 1PH
480 UF
1.82 GAL. COMBUSTIBLE LIQUID
CAUTION! BEFORE INSTALLING OR
OPERATING READ GEH-2733

MADE IN USA NP267214

* UP TO +.50[13]
CASE BULGE

MAX. TERMINAL
TIGHTENING TORQUE
15 FT-LBS.

NP267192A

GE ENERGY FORT EDWARD, N.Y., U.S.A.		SIZE A	Est Weight 64 lbs.	OUTLINE 19L1193WH4		SHEET 2	CONT ON 3
DRAWN McGinn	DATE 2/13/2002	SCALE WC1	DISTR. TO				
ISSUED	DATE						