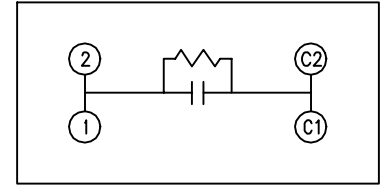
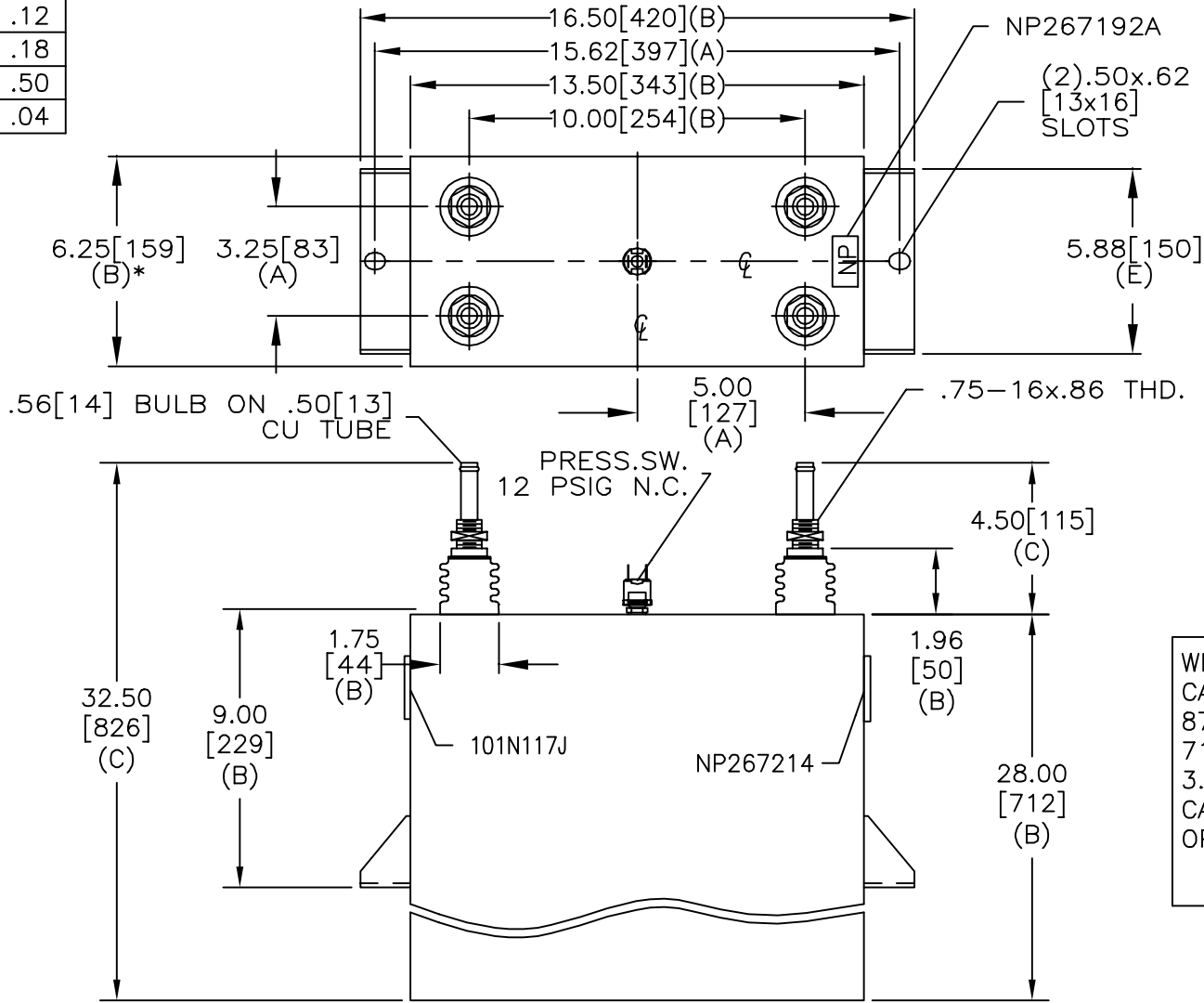


SIZE A	DWG NO 19L1196WH4	SHT 2	REV
REV	DESCRIPTION	DATE	APPROVED

TOL	+/-
A	.06
B	.12
C	.18
D	.50
E	.04



SCHEMATIC DIAGRAM - 107

WITH INTERNAL DISCH RESISTORS
 CAT. 19L1196WH4 SN
 8746KVAR 3600V 1500HZ 1 PH
 71.6 UF
 3.17 GAL. COMBUSTIBLE LIQUID
 CAUTION! BEFORE INSTALLING OR
 OPERATING READ GEH-2733

NP267214

* UP TO +.50 [13]
 CASE BULGE

MAX. TERMINAL
 TIGHTENING TORQUE
 15 FT-LBS

NP267192A

INDUSTRIAL SYSTEMS FORT EDWARD, N.Y., U.S.A.	SIZE A	OUTLINE 19L1196WH4	
	SCALE		
DRAWN B. ROSS	DATE MAR. 18, 2002	SHEET 2	CONT ON 3
ISSUED	DATE		

DISTR. TO