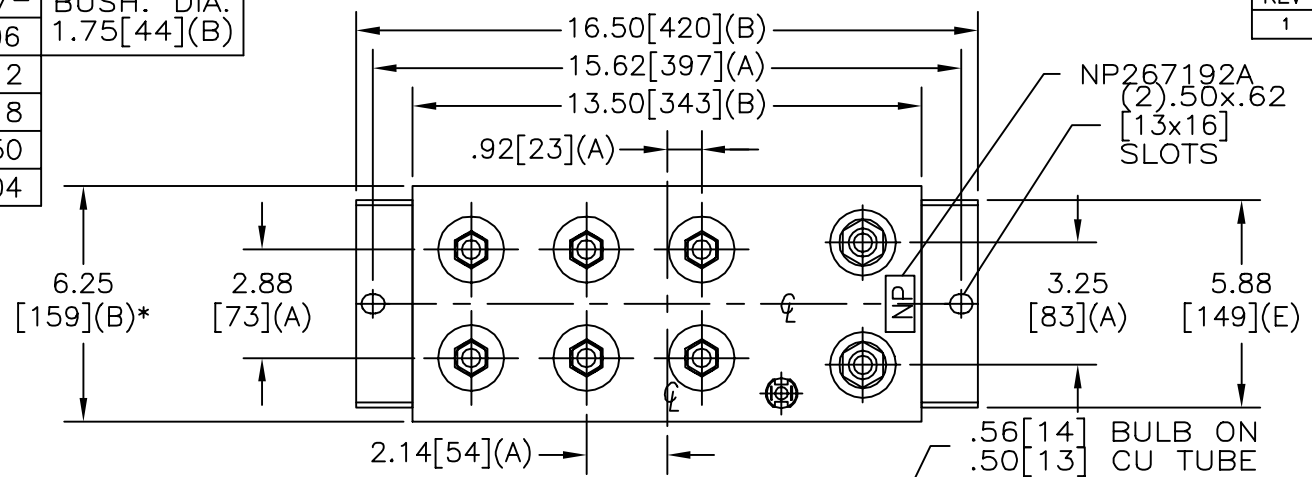
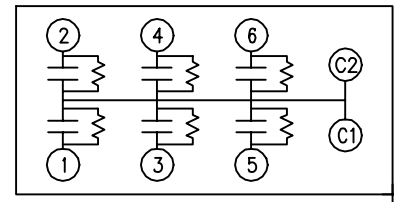


SIZE A	DWG NO 19L1203WH4	SHT 2	REV 1
REV 1	DESCRIPTION CHG NP CAT NO.	DATE 10/2/02	APPROVED BTR

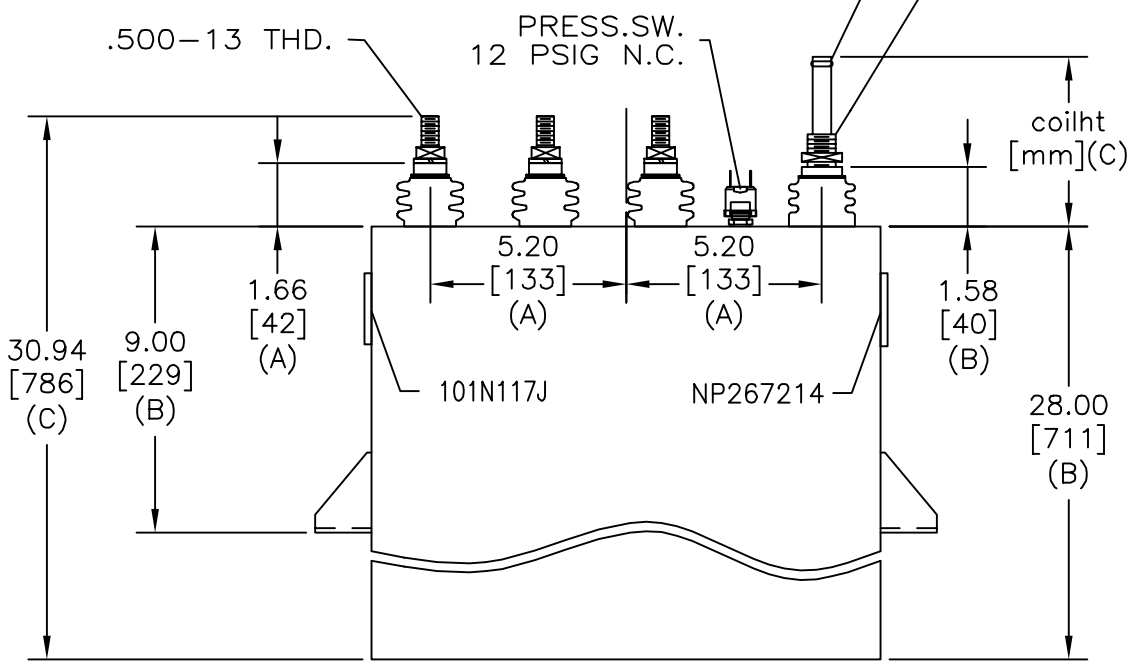
TOL	+/-	BUSH. DIA. 1.75[44](B)
A	.06	
B	.12	
C	.18	
D	.50	
E	.04	



TERM	uF	kVAR
1	71.32	302.5
2	71.32	302.5
3	71.32	302.5
4	71.32	302.5
5	71.32	302.5
6	71.32	302.5



SCHEMATIC DIAGRAM - 617



WITH INTERNAL DISCH RESISTORS
 CAT. 19L1203WH4 SN
 1815KVAR 1500V 300HZ 1PH
 3.370 GAL. COMBUSTIBLE LIQUID
 CAUTION! BEFORE INSTALLING OR
 OPERATING READ GEH-2733
 NP267214

* UP TO +.50[13]
 CASE BULGE

MAX. TERMINAL
 TIGHTENING TORQUE
 15 FT-LBS

NP267192A

INDUSTRIAL SYSTEMS FORT EDWARD, N.Y., U.S.A.	SIZE	A		OUTLINE 19L1203WH4
	DRAWN	B. ROSS	DATE	
ISSUED		DATE	9/25/02	SCALE
			SHEET	2
			CONT	ON 3

DISTR. TO