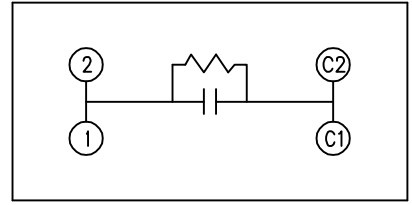
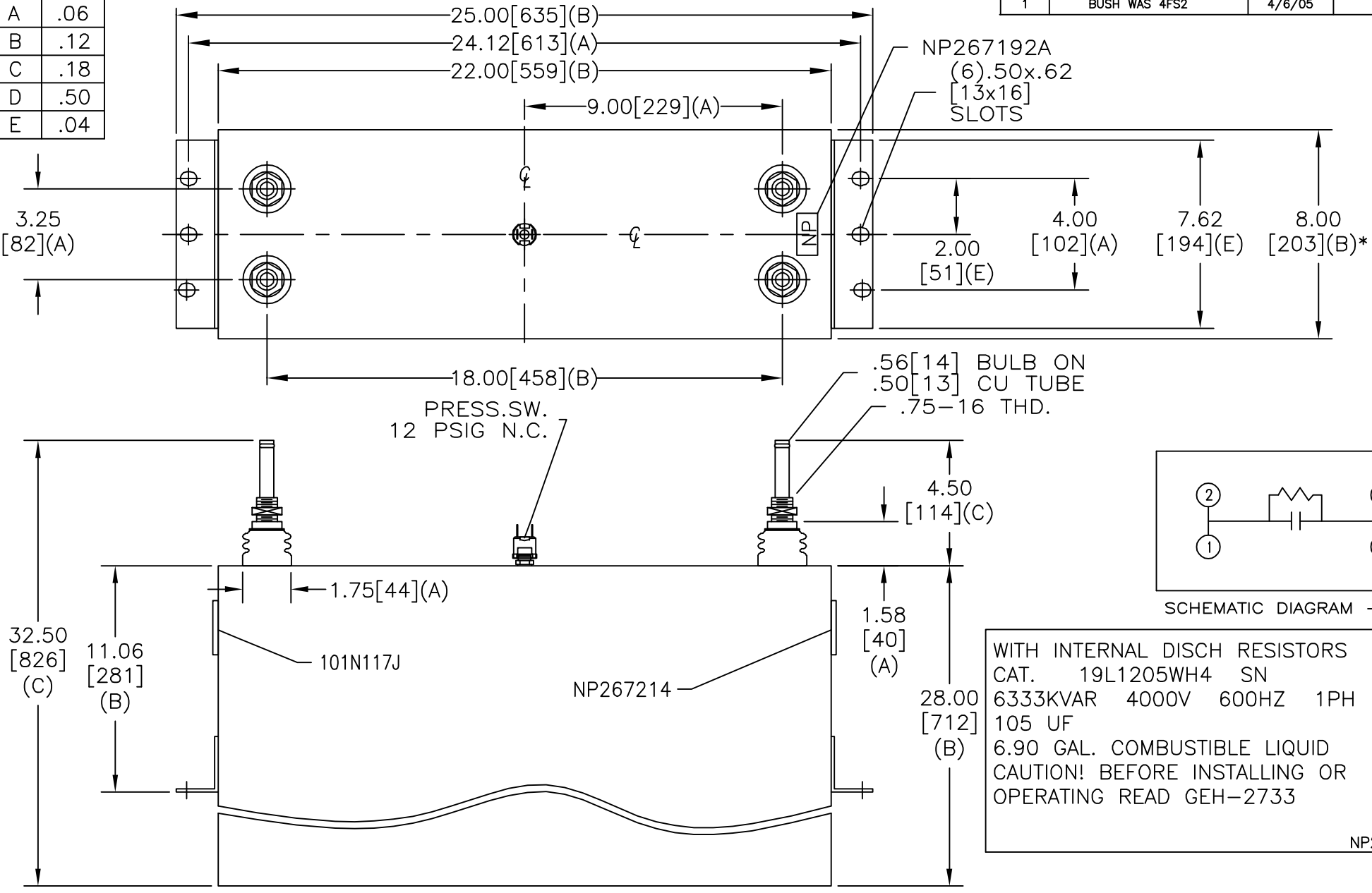


SIZE A	DWG NO 19L1205WH4	SHT 2	REV 1
REV 1	DESCRIPTION BUSH WAS 4FS2	DATE 4/6/05	APPROVED BTR

TOL	+/-
A	.06
B	.12
C	.18
D	.50
E	.04



SCHEMATIC DIAGRAM - 107

WITH INTERNAL DISCH RESISTORS
 CAT. 19L1205WH4 SN
 6333KVAR 4000V 600HZ 1PH
 105 UF
 6.90 GAL. COMBUSTIBLE LIQUID
 CAUTION! BEFORE INSTALLING OR
 OPERATING READ GEH-2733

NP267214

* UP TO +.75 [19]
 CASE BULGE

MAX. TERMINAL
 TIGHTENING TORQUE
 15 FT-LBS

NP267192A

INDUSTRIAL SYSTEMS FORT EDWARD, N.Y., U.S.A.		SIZE A
DRAWN B.ROSS	DATE OCT 04, 2002	SCALE
ISSUED	DATE 10/9/02	

OUTLINE
19L1205WH4

SHEET 2 CONT ON -

DISTR. TO