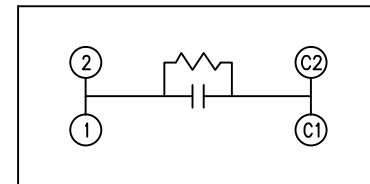
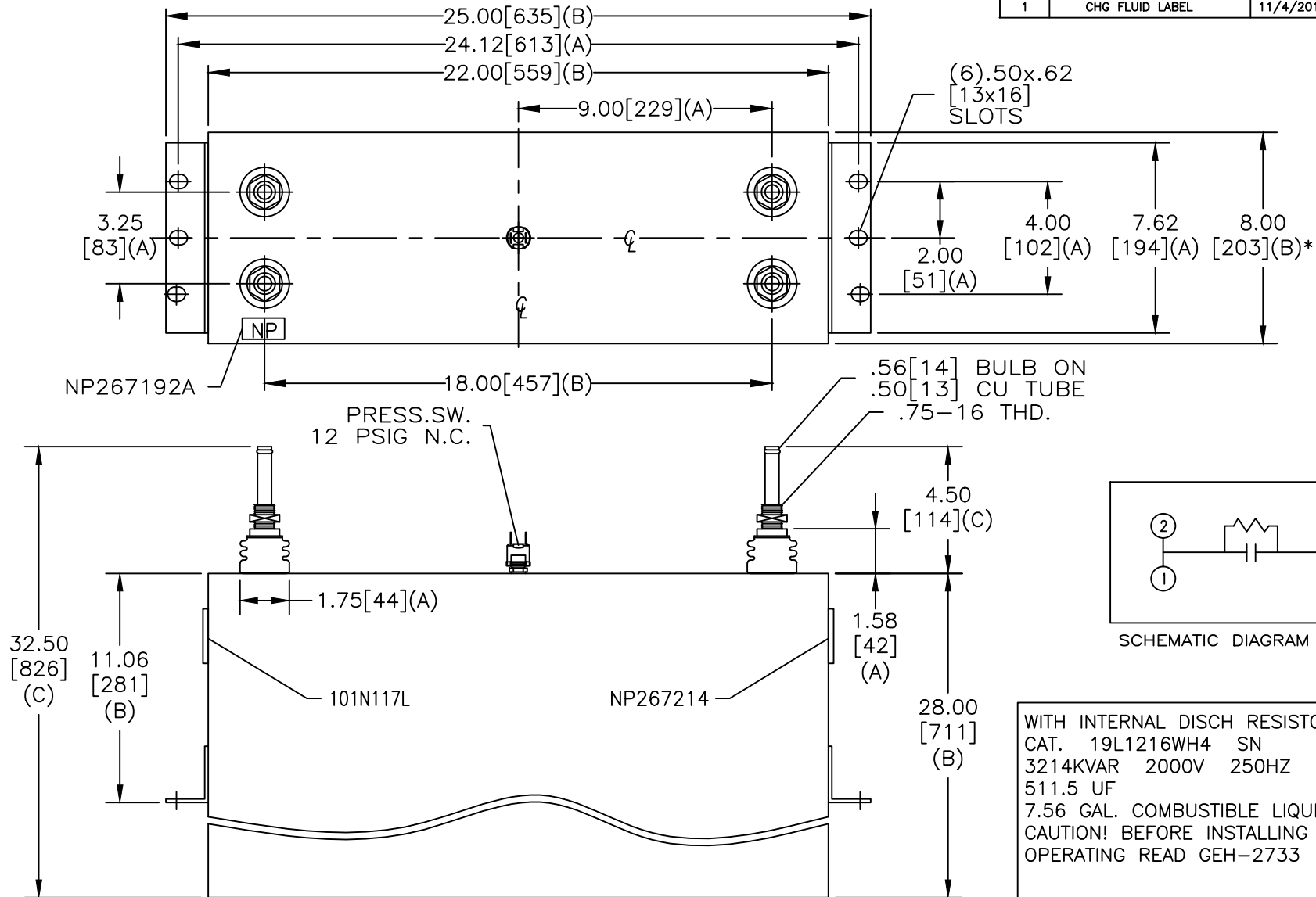


| | | | |
|-----------|--------------------------------|-------------------|-----------------|
| SIZE A | DWG NO 19L1216WH4 | SHT 2 | REV 1 |
| REV 1 | DESCRIPTION CHG FLUID LABEL | DATE 11/4/2013 | APPROVED JBC |



SCHEMATIC DIAGRAM - 107

WITH INTERNAL DISCH RESISTORS
CAT. 19L1216WH4 SN
3214KVAR 2000V 250HZ 1PH
511.5 UF
7.56 GAL. COMBUSTIBLE LIQUID
CAUTION! BEFORE INSTALLING OR
OPERATING READ GEH-2733

NP267214

* UP TO +.75[19]
CASE BULGE

MAX. TERMINAL
TIGHTENING TORQUE
15 FT-LBS

NP267192A

| | | |
|--|----------------------|-----------|
| GE ENERGY FORT EDWARD, N.Y., U.S.A. | | SIZE A |
| DRAWN B. ROSS | DATE JAN 22, 2003 | SCALE |
| ISSUED | DATE 2/12/03 | |

OUTLINE
19L1216WH4

SHEET 2 CONT ON 3

DISTR. TO