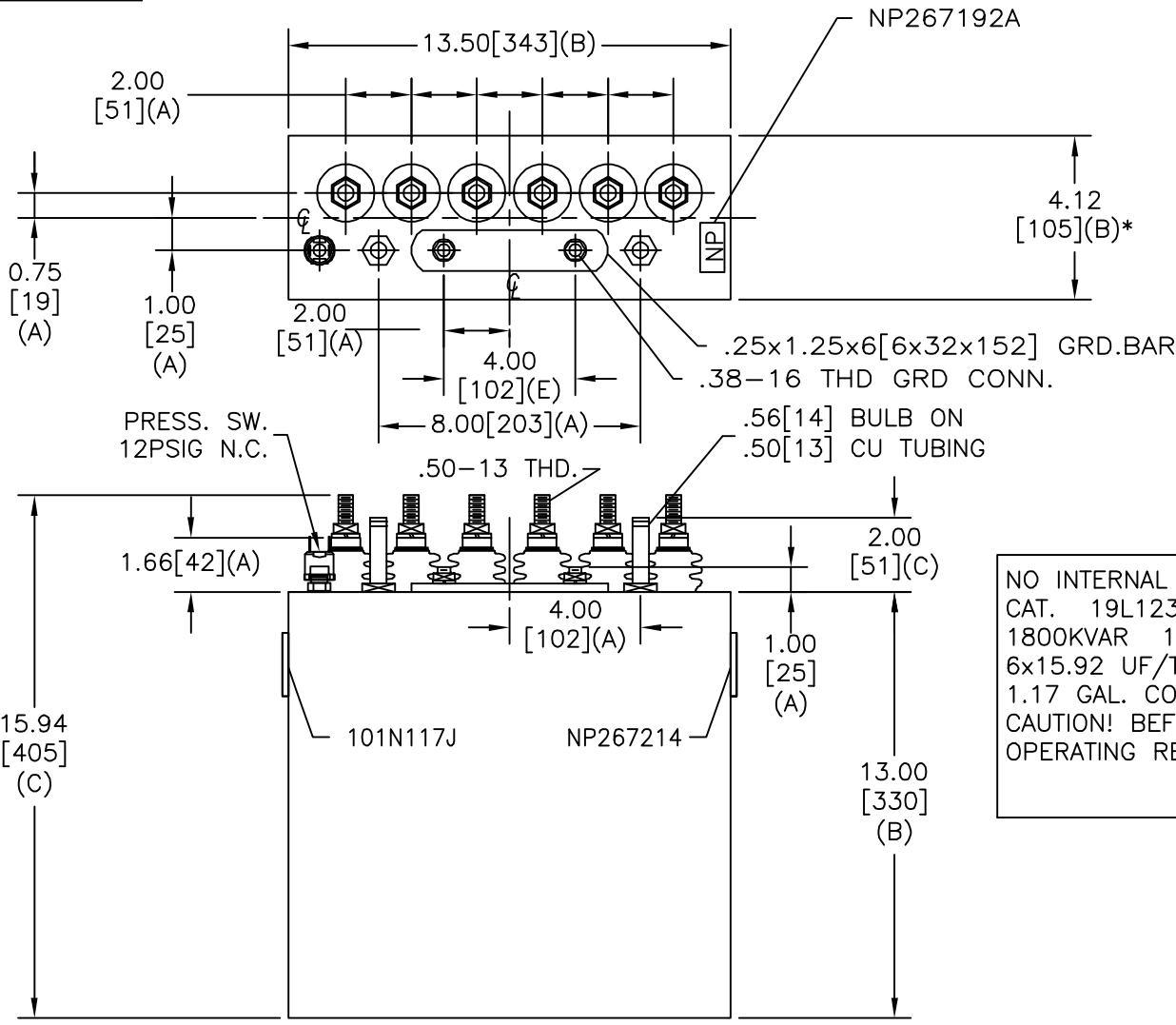
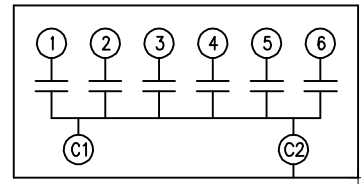


SIZE A	DWG NO 19L1231WH2	SHT 2	REV 6
REV	DESCRIPTION	DATE	APPROVED

TOL	+/-	BUSH. DIA.
A	.06	1.75[44](B)
B	.12	
C	.18	
D	.50	
E	.04	



TERM	uF	kVAR
1	15.92	300
2	15.92	300
3	15.92	300
4	15.92	300
5	15.92	300
6	15.92	300



SCHEMATIC DIAGRAM - 601

NO INTERNAL DISCH RESISTORS  
 CAT. 19L1231WH2 SN  
 1800KVAR 1000V 3000HZ 1PH  
 6x15.92 UF/TAP  
 1.17 GAL. COMBUSTIBLE LIQUID  
 CAUTION! BEFORE INSTALLING OR  
 OPERATING READ GEH-2733  
 NP267214

\* UP TO +.50[13]  
CASE BULGE

MAX. TERMINAL  
TIGHTENING TORQUE  
15 FT-LBS

NP267192A

<b>INDUSTRIAL SYSTEMS</b> FORT EDWARD, N.Y., U.S.A.	SIZE <b>A</b>	<h1>OUTLINE</h1> <h2>19L1231WH2</h2>
	SCALE	
DRAWN B. ROSS ISSUED	DATE NOV 11, 2003 DATE	SHEET 2 CONT ON -

DISTR. TO