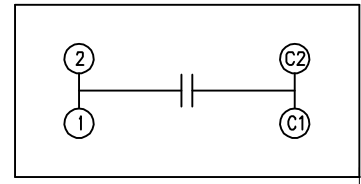
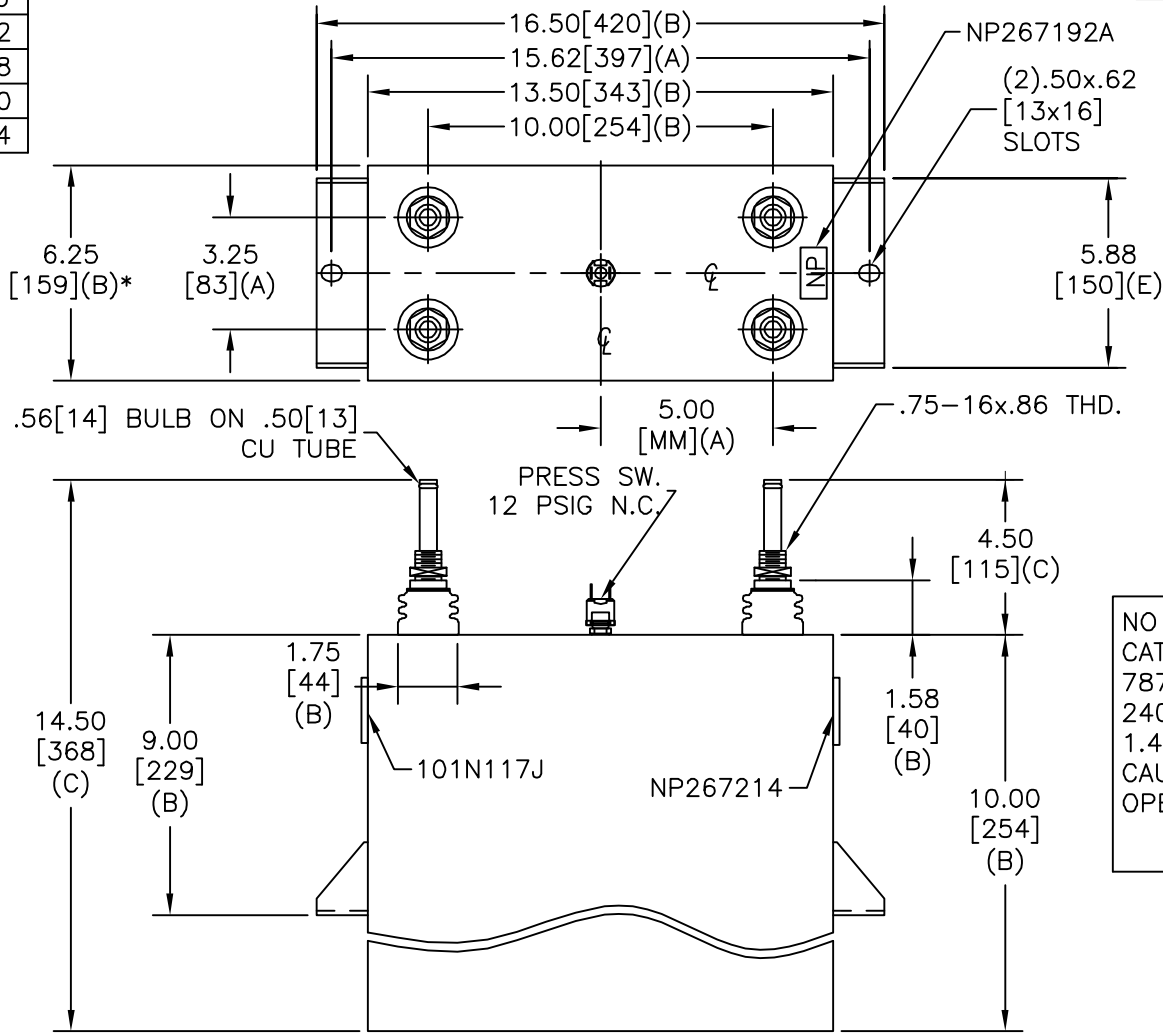


SIZE A	DWG NO 19L1242WH4	SHT 2	REV
REV	DESCRIPTION	DATE	APPROVED

TOL	+/-
A	.06
B	.12
C	.18
D	.50
E	.04



SCHEMATIC DIAGRAM - 105

NO INTERNAL DISCH RESISTORS
 CAT. 19L1242WH4 SN
 787KVAR 590V 1500HZ 1PH
 240 UF
 1.43 GAL. COMBUSTIBLE LIQUID
 CAUTION! BEFORE INSTALLING OR
 OPERATING READ GEH-2733

NP267214

* UP TO +.50 [13]
 CASE BULGE

MAX. TERMINAL
 TIGHTENING TORQUE
 15 FT-LBS

NP267192A

INDUSTRIAL SYSTEMS FORT EDWARD, N.Y., U.S.A.		SIZE A
DRAWN	B. Ross	DATE MAR 16, 2004
ISSUED		DATE

OUTLINE
19L1242WH4

SHEET 2 CONT ON 3

DISTR. TO