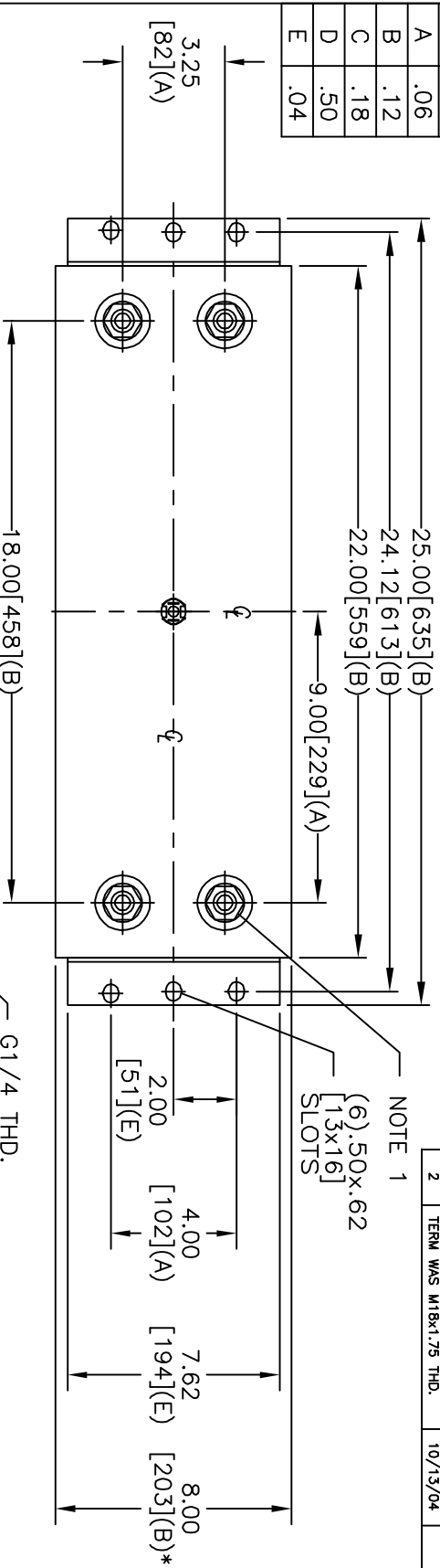
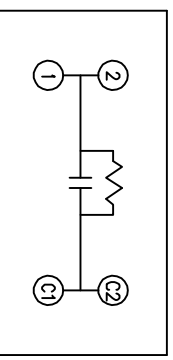
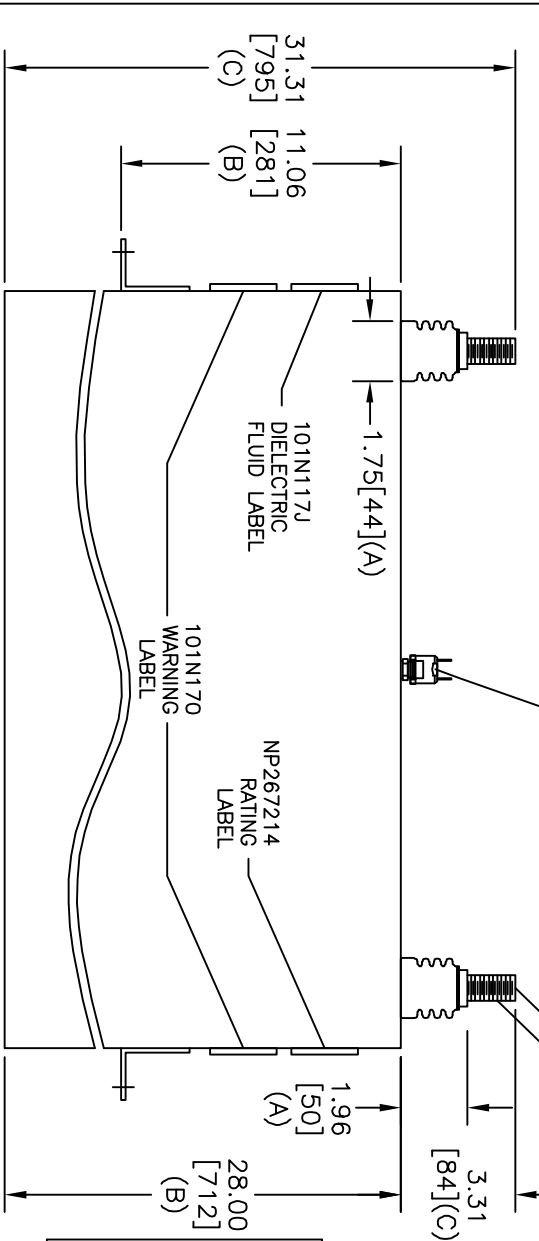


TOL	+/-
A	.06
B	.12
C	.18
D	.50
E	.04



12 PSIG S.W.
PRESS. N.C.



WITH INTERNAL DISCH RESISTORS
 CAT. 19L1251WH4026 SN
 6160KVAR 3500V 500HZ 1PH
 180.1 UF
 7.61 GAL. COMBUSTIBLE LIQUID
 CAUTION! BEFORE INSTALLING OR
 OPERATING READ GEH-2733
 NP267214

NOTE 1. MAX. TERMINAL TIGHTENING
 TORQUE IS 25 FT-LBS.
 NOTE 2. MIN. WATER FLOW 3.8 L/MIN

* UP TO +.75 [19]
 CASE BULGE

SIZE	DWG NO	SHT	REV
A	19L1251WH4	2	2
REV	DESCRIPTION	DATE	APPROVED
2	TERM WAS M18x1.75 THD.	10/13/04	BTR

INDUSTRIAL SYSTEMS FORT EDWARD, N.Y., U.S.A.		DATE	DATE
		ISSUED	DATE
DRAWN	B.ROSS	DATE	DATE
ISSUED		DATE	DATE

SIZE	ESTIMATED WEIGHT	<h1>OUTLINE</h1> <h2>19L1251WH4</h2>
A	295 LBS	
SCALE		SHEET 2
		CONT ON 3

DISTR. TO