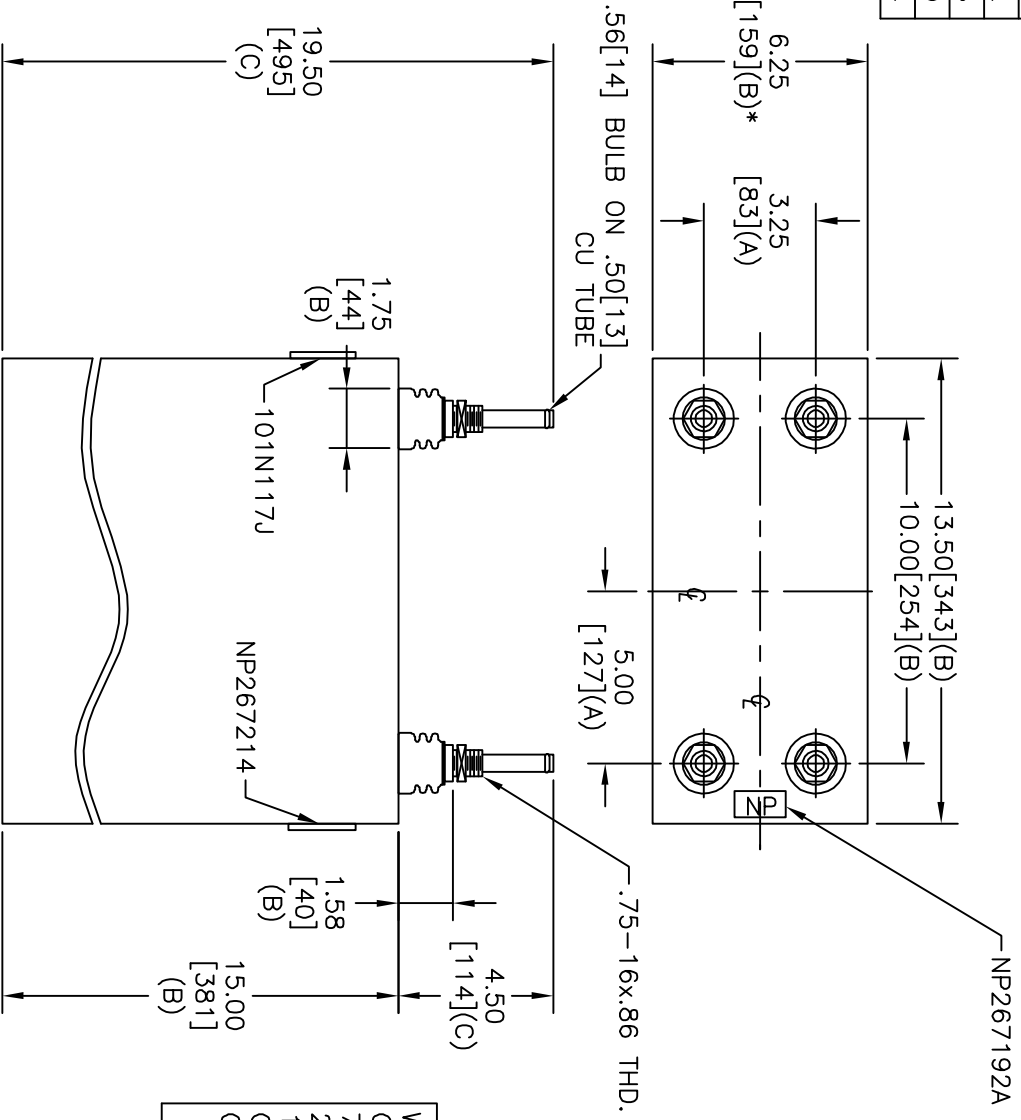
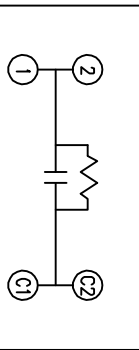


TOL	+/-
A	.06
B	.12
C	.18
D	.50
E	.04



SIZE	DWG NO	SHT	REV
A	19L1252WH1	2	1
REV	DESCRIPTION	DATE	APPROVED
1	SHOW NPS	8/25/04	BTR



SCHEMATIC DIAGRAM - 107

WITH INTERNAL DISCH RESISTORS  
 CAT. 19L1252WH1 SN  
 760KVAR 1100V 500HZ 1PH  
 200 UF  
 1.90 GAL. COMBUSTIBLE LIQUID  
 CAUTION! BEFORE INSTALLING OR  
 OPERATING READ GEH-2733

NP267214

\* UP TO +.50 [13]  
 CASE BULGE

MAX. TERMINAL  
 TIGHTENING TORQUE  
 15 FT-LBS

NP267192A



INDUSTRIAL SYSTEMS  
 FORT EDWARD, N.Y., U.S.A.

ISSUED	DATE	DATE	DATE
	7/21/04	JUL 16, 2004	B. ROSS

SIZE A

OUTLINE  
 19L1252WH1

SHEET 2 CONT 3

DISTR. TO