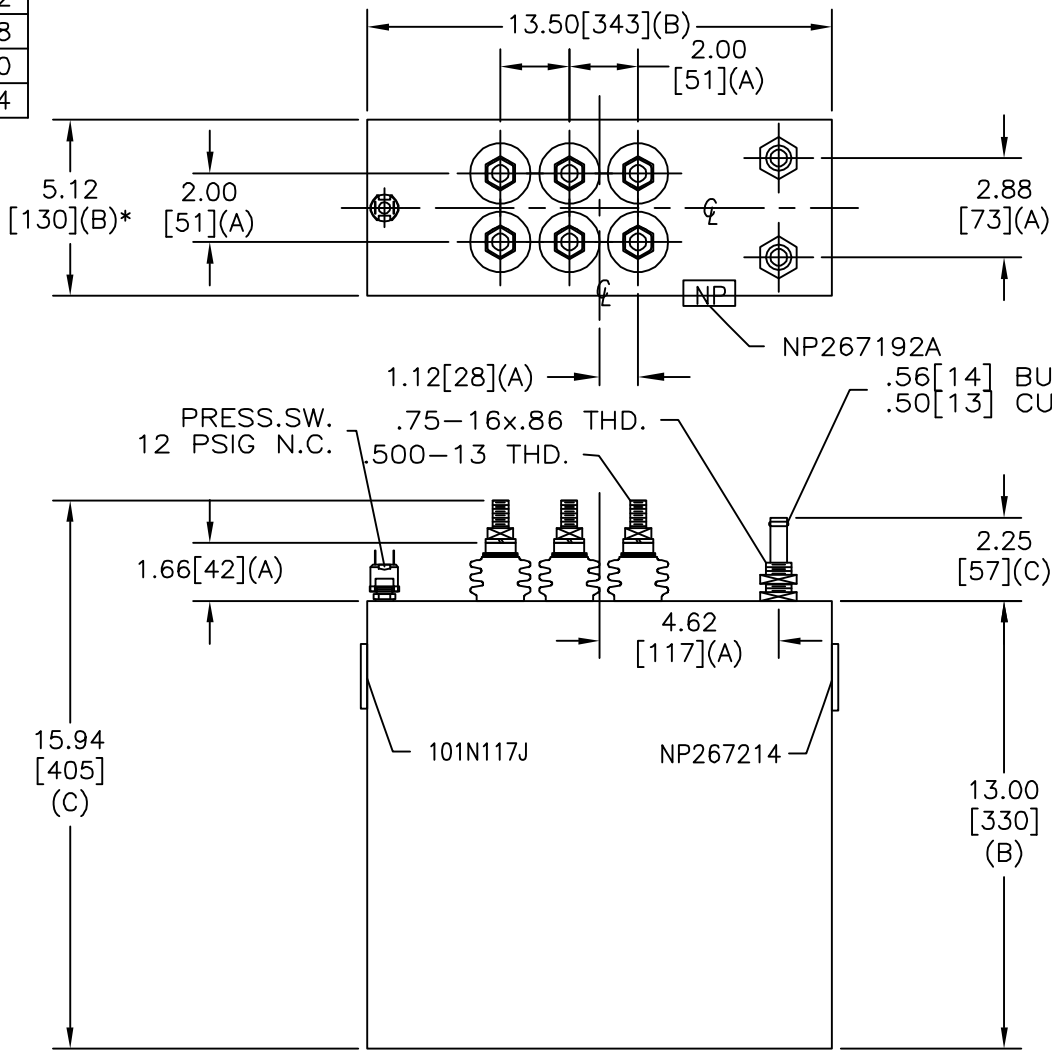
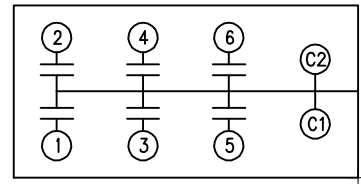


SIZE	DWG NO	SHT	REV
A	19L1254WH2	2	1
REV	DESCRIPTION	DATE	APPROVED
1	CASE WID WAS 5.12 TPL WAS 615	10/13/04	BTR

TOL	+/-	BUSH. DIA.
A	.06	1.75[44](B)
B	.12	
C	.18	
D	.50	
E	.04	



TERM	uF	kVAR
1	22.64	266.7
2	22.64	266.7
3	22.64	266.7
4	22.64	266.7
5	22.64	266.7
6	22.64	266.7



SCHEMATIC DIAGRAM - 616

NO INTERNAL DISCH RESISTORS
 CAT. 19L1254WH2 SN
 1600KVAR 1250V 1200HZ 1PH
 6x22.64 UF/TAP
 1.66 GAL. COMBUSTIBLE LIQUID
 CAUTION! BEFORE INSTALLING OR
 OPERATING READ GEH-2733

NP267214

* UP TO +.50[13]
 CASE BULGE

MAX. TERMINAL
 TIGHTENING TORQUE
 15 FT-LBS

NP267192A

INDUSTRIAL SYSTEMS FORT EDWARD, N.Y., U.S.A.		SIZE A	OUTLINE 19L1254WH2
DRAWN B.Ross	DATE Sep 17, 2004	SCALE	
ISSUED	DATE 10/13/04	SHEET 2	CONT ON -

DISTR. TO