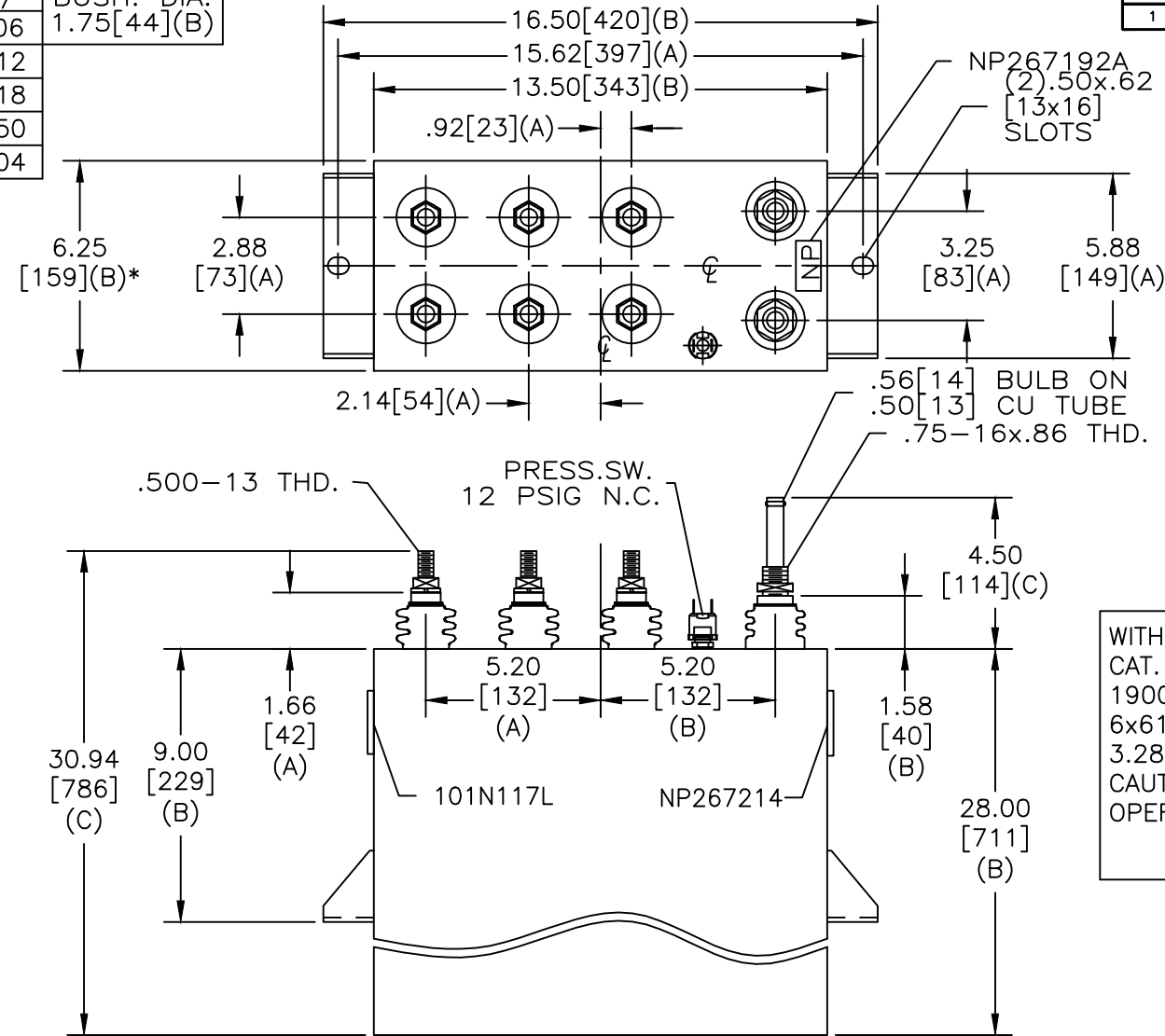
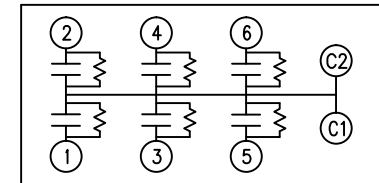


SIZE A	DWG NO 19L1257WH4	SHT 2	REV 1
REV 1	DESCRIPTION Chg Fluid NP	DATE 3/13/13	APPROVED JBC

TOL	+/-	BUSH. DIA.
A	.06	1.75[44](B)
B	.12	
C	.18	
D	.50	
E	.04	



TERM	uF	kVAR
1	61.71	316.67
2	61.71	316.67
3	61.71	316.67
4	61.71	316.67
5	61.71	316.67
6	61.71	316.67



SCHEMATIC DIAGRAM - 617

WITH INTERNAL DISCH RESISTORS
 CAT. 19L1257WH4 SN
 1900KVAR 1650V 300HZ 1PH
 6x61.71 UF/TAP
 3.28 GAL. COMBUSTIBLE LIQUID
 CAUTION! BEFORE INSTALLING OR
 OPERATING READ GEH-2733
 NP267214

* UP TO +.50[13]
 CASE BULGE

MAX. TERMINAL
 TIGHTENING TORQUE
 15 FT-LBS
 NP267192A

GE ENERGY FORT EDWARD, N.Y., U.S.A.	SIZE A	EST WEIGHT 112 LBS 50.9 kg	OUTLINE 19L1257WH4
	SCALE		
DRAWN E.McGinn ISSUED	DATE 11-18-04 DATE 11-24-04	SHEET 2 CONT ON 3	DISTR. TO