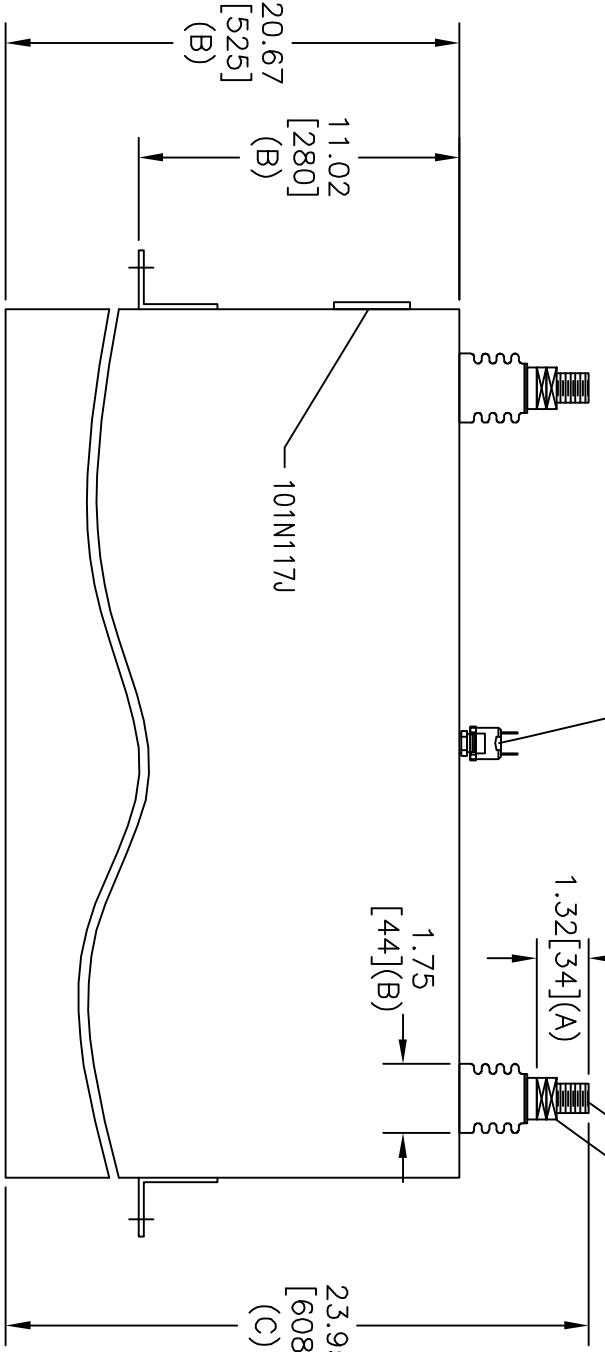
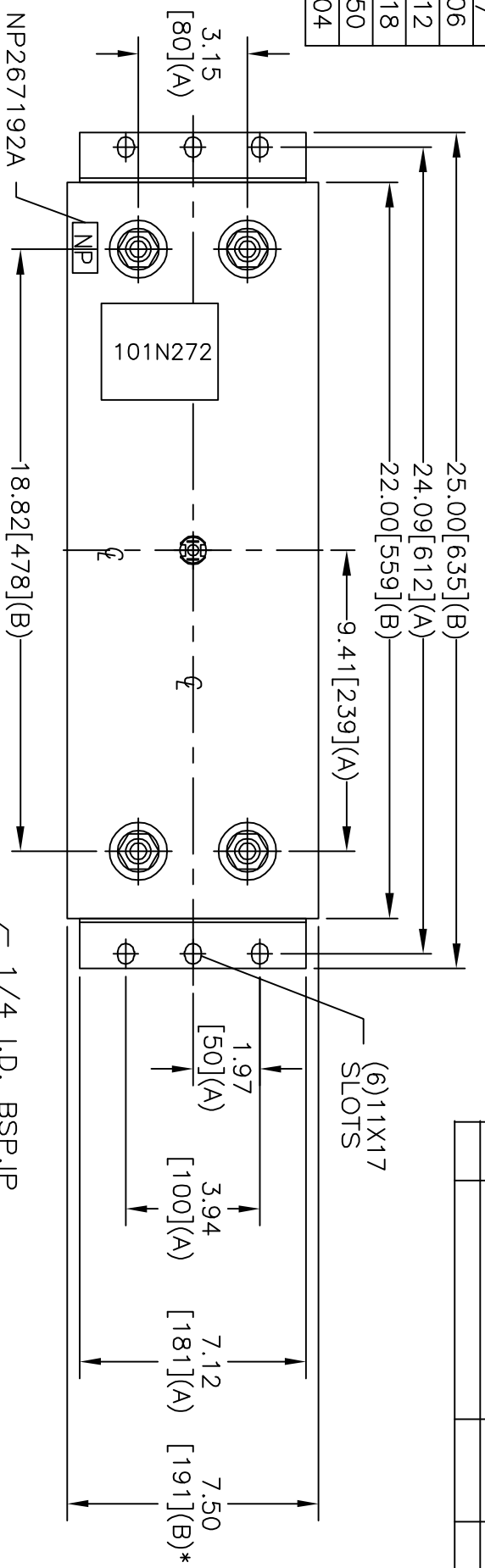
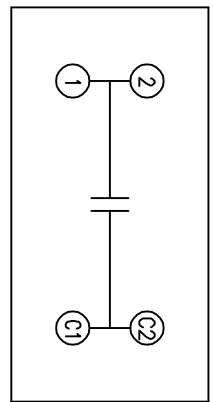


TOL	+/-
A	.06
B	.12
C	.18
D	.50
E	.04



12 PSIG N.C.
 1/4 I.D. BSP. IP
 (8).75-16 NUTS



1200	KVAR	600	V	1768	UF
1	PH	300	Hz		
ABB NO. GESS9506109P0001					
CAT DS05012501.01 SN					
101N272					

- NOTES:
1. MIN. WATER FLOW 4.5 L/MIN.
 2. MAX. OUTLET WATER TEMP. 40 DEGREES C.

SIZE	DWG NO	SHT	REV
A	19L1261WD4	2	
REV	DESCRIPTION	DATE	APPROVED

* UP TO +.75[19]
 CASE BULGE

MAX. TERMINAL
 TIGHTENING TORQUE
 15 FT-LBS

NP267192A

 INDUSTRIAL SYSTEMS FORT EDWARD, N.Y., U.S.A.		DATE	FEB 4, 2005
		ISSUED	2/9/05
DRAWN	E. McGinn	DATE	FEB 4, 2005
SCALE A		DATE	FEB 4, 2005

OUTLINE
 19L1261WD4