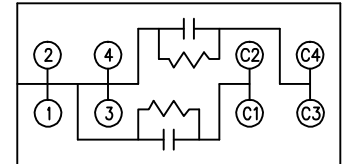
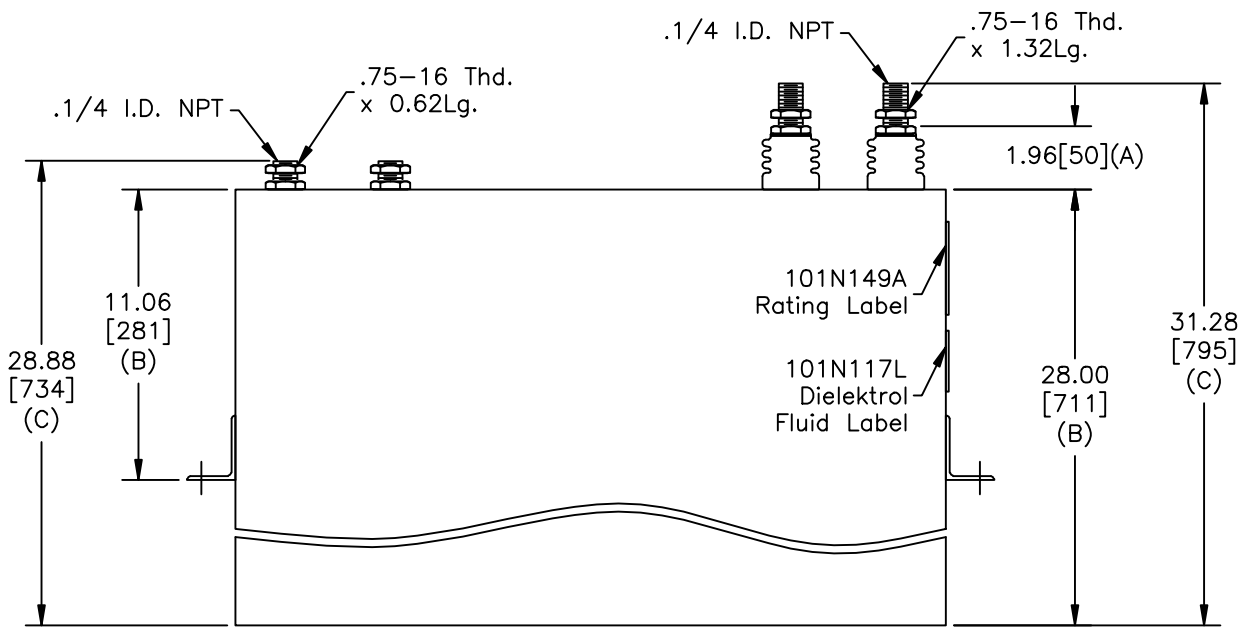
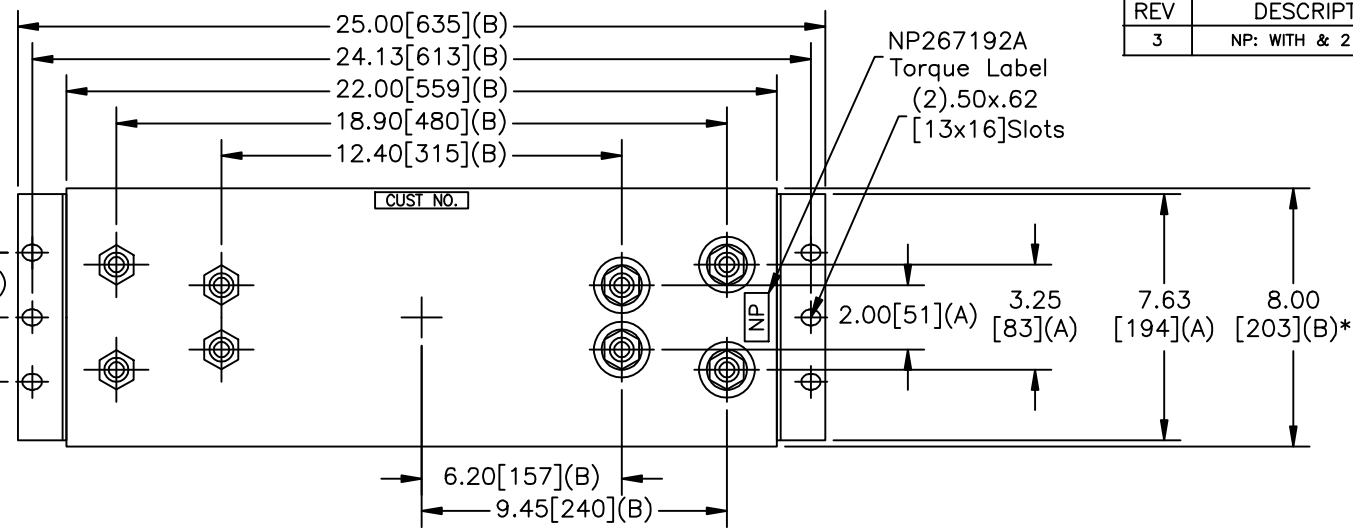


SIZE A	DWG NO 19L1264WA3	SHT 2	REV 3
REV 3	DESCRIPTION NP: WITH & 2 TAPS	DATE 10/3/2008	APPROVED BTR

TOL	+/-
A	.06
B	.12
C	.18
D	.50
E	.04
BUSH. DIA. 1.75[44](B)	



SCHEMATIC DIAGRAM - 241

PN# SC 31266A58 SER. NO.
 KVAR 2625 VOLTS 800 HZ 300
 PH 1 NO.TAPS 2 MFD/TAP 1088

WITH INTERNAL DISCH RESISTORS
 CONTAINS 6.7 GALS. NO PCB
 COMBUSTIBLE FLUID. OSHA CLASS III-B
 101N149A MADE IN USA

SC 31266A58
 2625KVAR 800V 300HZ 1PH
 2x1312.5 KVAR/TAP

* UP TO +.75[19] CASE BULGE

MAX. TERMINAL TIGHTENING TORQUE 15 FT-LBS.

NP267192A

GE ENERGY FORT EDWARD, N.Y., U.S.A.	DRAWN B.Ross	DATE 3/30/2005
	ISSUED	DATE 4/6/2005

SIZE A	Est Weight 296 lbs.
SCALE WC3	SHEET 2 CONT ON 3

OUTLINE
19L1264WA3

DISTR. TO