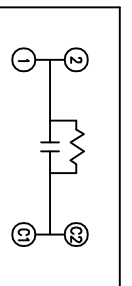
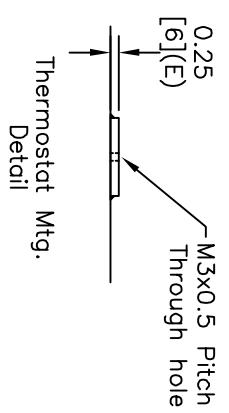
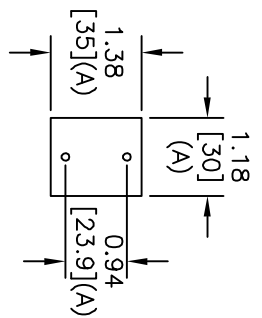
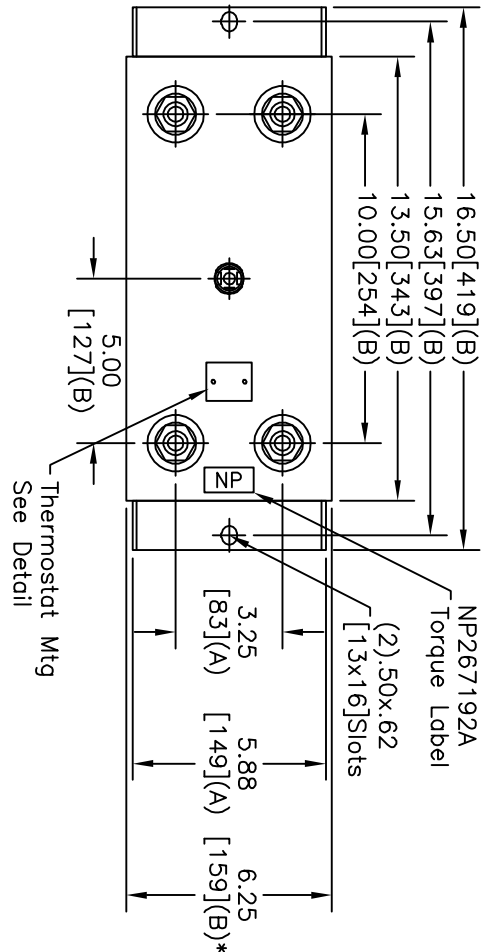
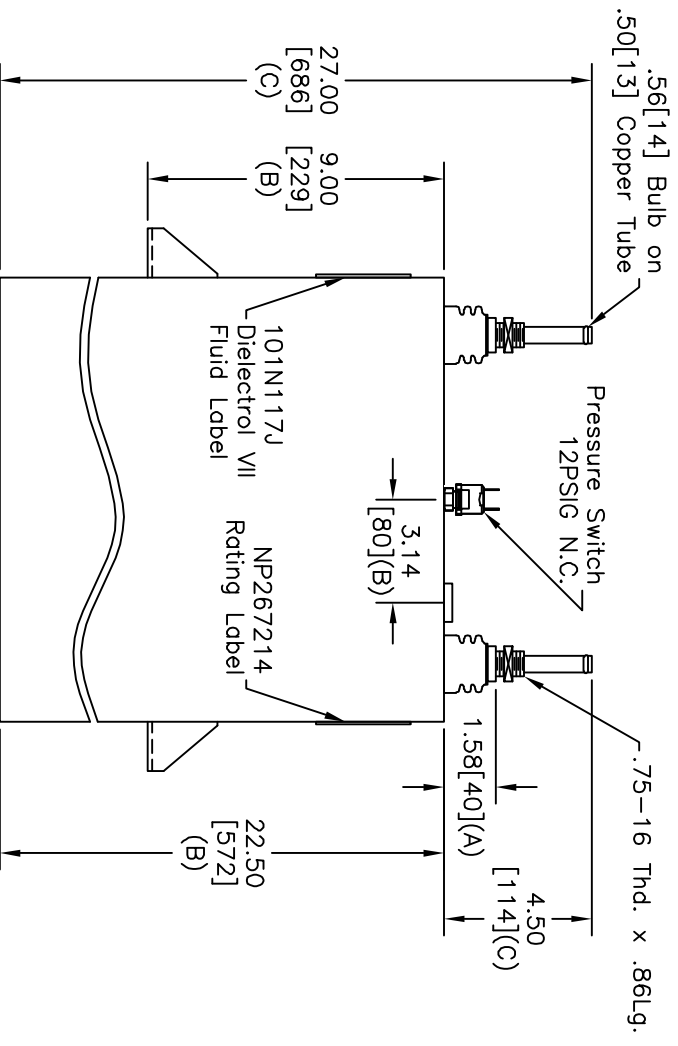


TOL	+/-
A	.06
B	.12
C	.18
D	.50
E	.04
BUSH. DIA.	1.75[44](B)



SCHEMATIC DIAGRAM - 107

WITH INTERNAL DISCH RESISTORS
 CAT. 19L1266WH4 SN
 3000KVAR 1250V 700HZ 1PH
 436.5 UF
 2.4 GAL. COMBUSTIBLE LIQUID
 CAUTION! BEFORE INSTALLING OR
 OPERATING READ GEH-2733
 MADE IN USA
 NP267214



* UP TO +.50[13] CASE BULGE

MAX. TERMINAL TIGHTENING TORQUE 15 FT.-LBS.

		INDUSTRIAL SYSTEMS		SIZE	A
		FORT EDWARD, N.Y., U.S.A.			
DRAWN	B.ROSS	DATE	7/14/05	SCALE	WC1
ISSUED		DATE	8/10/05		
SHEET 2			CONT 3	DISTR. TO	

SIZE	DWG NO	SHT	REV
A	19L1266WH4	2	
REV	DESCRIPTION	DATE	APPROVED
			BTR

OUTLINE
 19L1266WH4