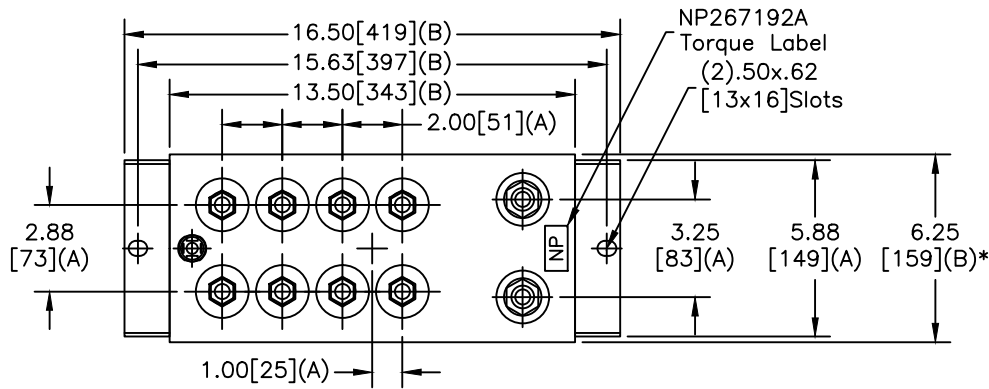
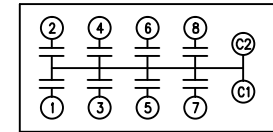
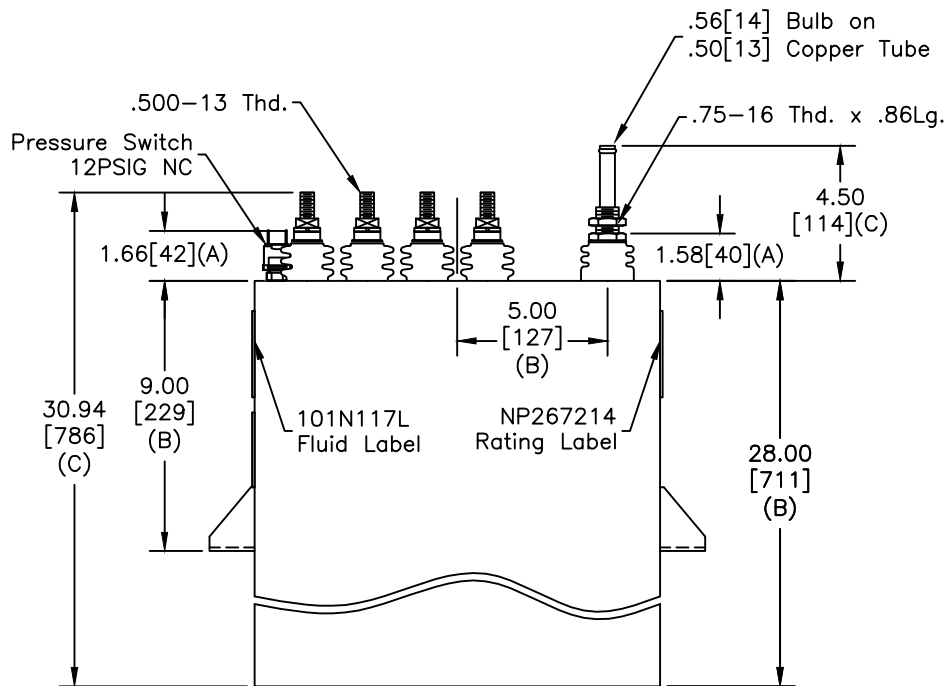


TOL	+/-
A	.06
B	.12
C	.18
D	.50
E	.04
BUSH. DIA.	1.75[44](B)

SIZE	DWG NO	SHT	REV
A	19L1270WH4	2	1
REV	DESCRIPTION	DATE	APPROVED
1	CHG FLUID LABEL	10/28/2013	JBC



TERM	uF	kVAR
1	54.6	375
2	54.6	375
3	54.6	375
4	54.6	375
5	54.6	375
6	54.6	375
7	54.6	375
8	54.6	375



SCHEMATIC DIAGRAM - 800

NO INTERNAL DISCH RESISTORS
 CAT. 19L1270WH4 SN
 3000KVAR 1250V 700HZ 1PH
 8x54.6UF/TAP
 3.1 GAL. COMBUSTIBLE LIQUID
 CAUTION! BEFORE INSTALLING OR
 OPERATING READ GEH-2733
 MADE IN USA NP267214

* UP TO +.50[13] CASE BULGE

MAX. TERMINAL TIGHTENING TORQUE 15 FT-LBS.

NP267192A

	GE ENERGY FORT EDWARD, N.Y., U.S.A.		SIZE	A	OUTLINE 19L1270WH4		
	DRAWN	B.Ross	DATE				12/20/2006
ISSUED		DATE	12/20/2006	SCALE	WC15	SHEET 2	CONT ON -

DISTR. TO