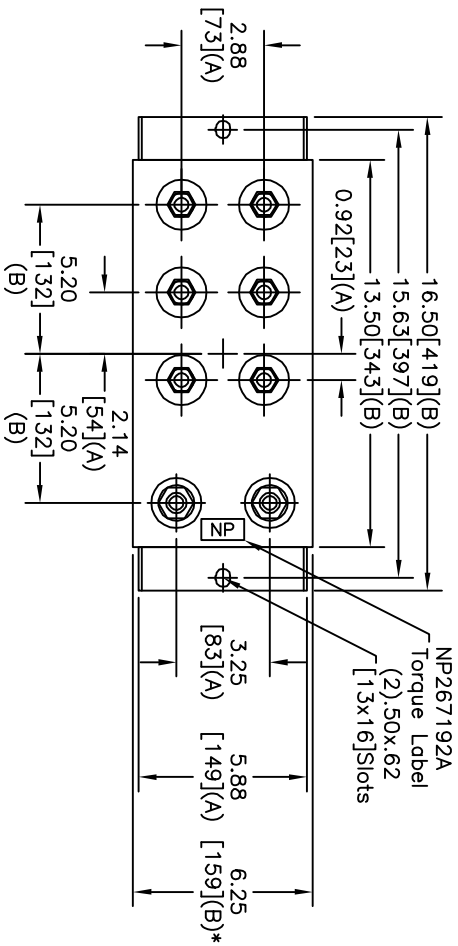
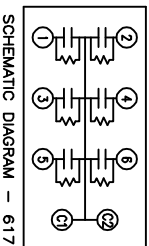
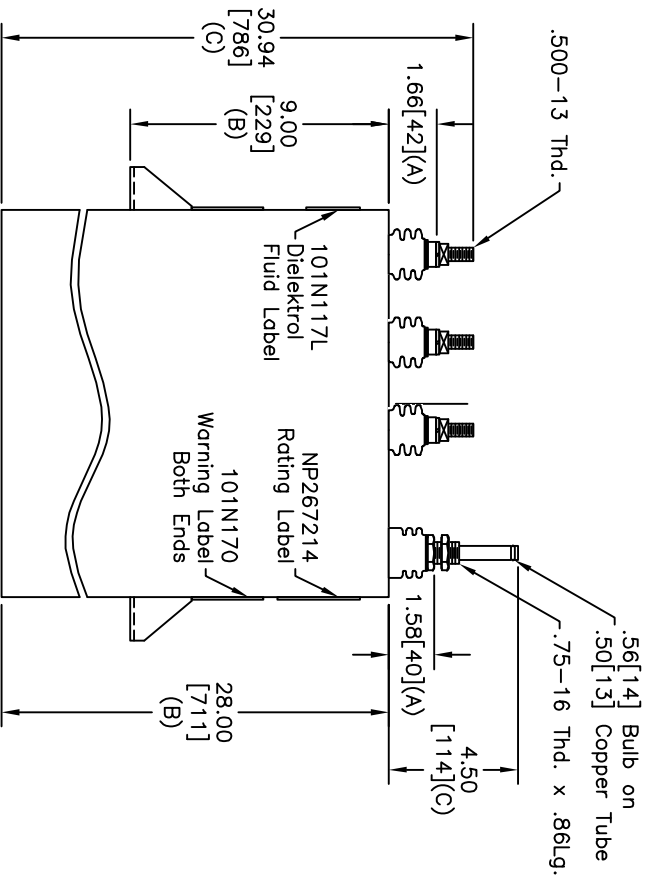


TOL	+/-
A	.06
B	.12
C	.18
D	.50
E	.04
BUSH, DIA	1.75[44](B)



TERM	UF	KVAR
1	37.58	226.7
2	37.58	226.7
3	37.58	226.7
4	37.58	226.7
5	37.58	226.7
6	37.58	226.7



SCHEMATIC DIAGRAM - 617

WITH INTERNAL DISCH RESISTORS
 CAT. 19L1272WH4026 SN
 1360KVAR 2000V 240HZ 1PH
 6x37.58 UF/TAP
 3.64 GAL. COMBUSTIBLE LIQUID
 CAUTION! BEFORE INSTALLING OR
 OPERATING READ GEH-2733
 MADE IN USA
 NP267214

- NOTES:
 1. Maximum terminal tightening torque
 .50-13 thd. 15 ft-lbs. 20.3 N-m
 .75-16 thd. 25 ft-lbs. 33.9 N-m
 2. Minimum water flow 1 GPM (3.8 l/m)

* UP TO +.50[13]
 CASE BULGE

MAX. TERMINAL
 TIGHTENING TORQUE
 15 FT-LBS.
 PART 192A

GE ENERGY FORT EDWARD, N.Y., U.S.A.		SIZE	A
DRAWN	B. ROSS	DATE	5/2/2007
ISSUED		DATE	5/2/2007
Est Weight 110 lbs.		SCALE	W/C6
OUTLINE		SHEET	2
19L1272WH4026		CONT	3

REV	DESCRIPTION	DATE	APPROVED
0	NEW	5/2/2007	BTR

SIZE	DWG NO	SHT	REV
A	19L1272WH4026	2	0

DISTR. TO