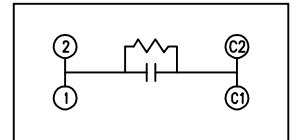
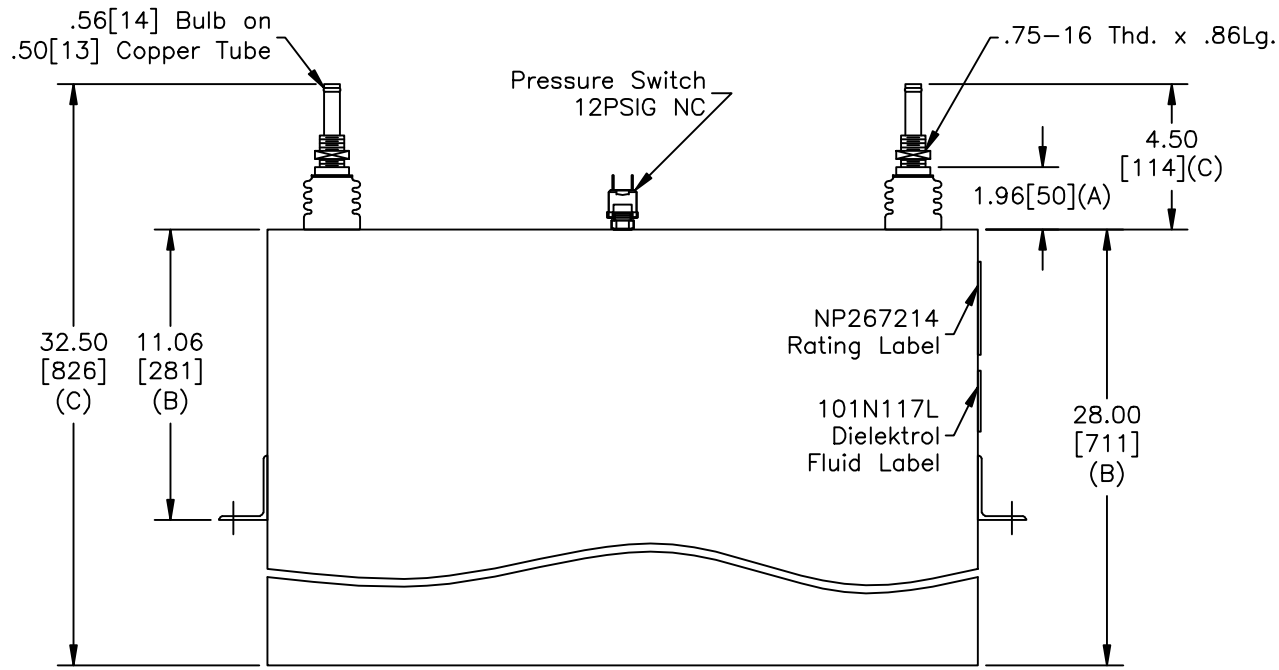
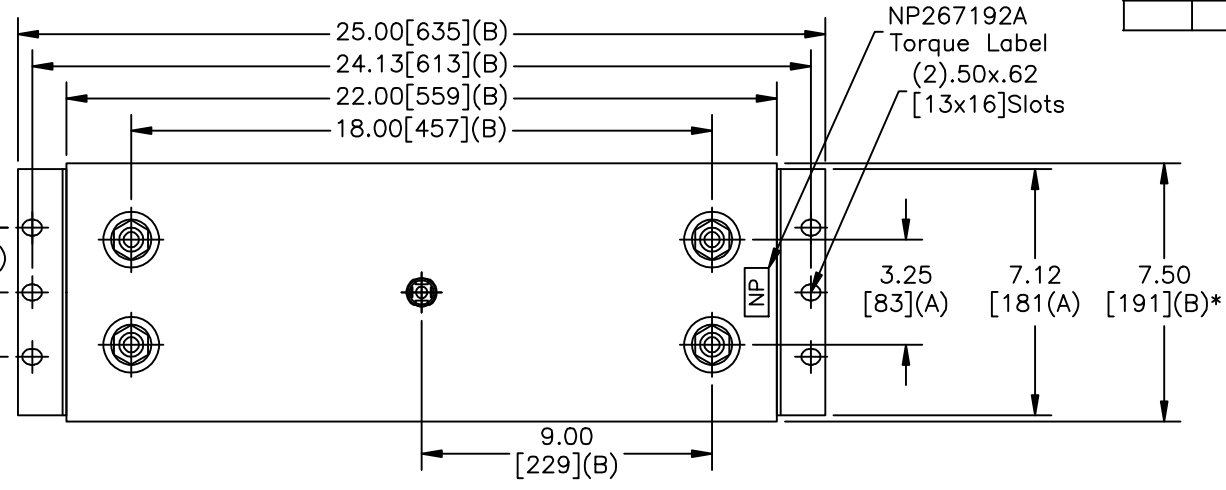


SIZE	DWG NO 19L1282WH4	SHT 2	REV
REV	DESCRIPTION	DATE	APPROVED

TOL	+/-
A	.06
B	.12
C	.18
D	.50
E	.04
BUSH. DIA.	1.75[44](B)



SCHEMATIC DIAGRAM - 107

WITH INTERNAL DISCH RESISTORS
 CAT. 19L1282WH4 SN
 5000KVAR 3600V 500HZ 1PH
 120.8 UF
 6.9 GAL. COMBUSTIBLE LIQUID
 CAUTION! BEFORE INSTALLING OR
 OPERATING READ GEH-2733
 MADE IN USA NP267214

* UP TO +.75[19]
CASE BULGE

MAX. TERMINAL
TIGHTENING TORQUE
15 FT-LBS.

NP267192A

GE ENERGY FORT EDWARD, N.Y., U.S.A.	SIZE A	Est Weight 295 lbs.	OUTLINE 19L1282WH4
	DRAWN B.Ross DATE 4/9/2008		
ISSUED DATE	WC1		

DISTR. TO