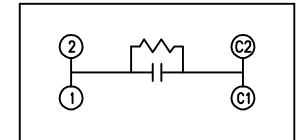
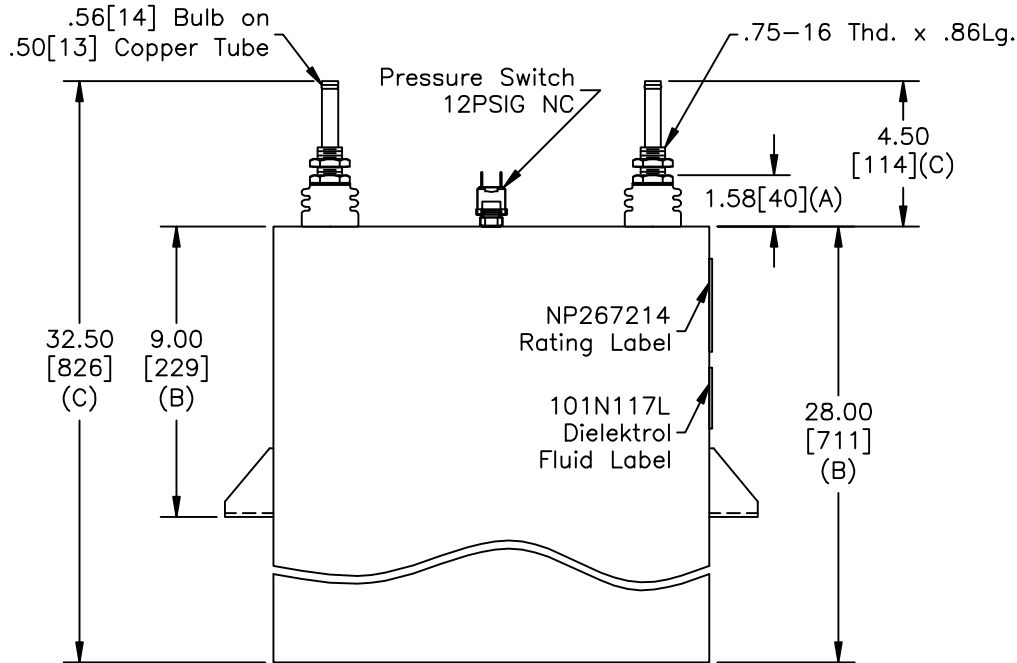
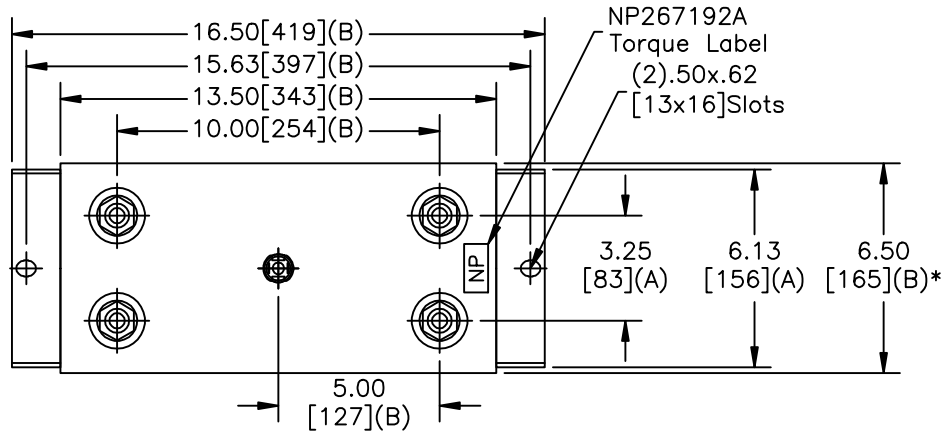


SIZE A	DWG NO 19L1284WH4	SHT 2	REV
REV	DESCRIPTION	DATE	APPROVED

TOL	+/-
A	.06
B	.12
C	.18
D	.50
E	.04
BUSH. DIA.	1.75[44](B)



SCHEMATIC DIAGRAM - 107

**CAPACITOR**  
WITH INTERNAL DISCHARGE RESISTORS

CAT. 19L1284WH4 SN  
3250KVAR 1500V 500HZ 1PH  
459.8 UF  
3.28 GAL. COMBUSTIBLE LIQUID  
CAUTION! BEFORE INSTALLING OR  
OPERATING READ GEH-2733

MADE IN USA NP267214

\* UP TO +.50[13]  
CASE BULGE

MAX. TERMINAL  
TIGHTENING TORQUE  
15 FT-LBS.

NP267192A

	GE ENERGY FORT EDWARD, N.Y., U.S.A.		SIZE A	Est Weight 116 lbs.	<b>OUTLINE</b> <b>19L1284WH4</b>			DISTR. TO	
	DRAWN	B.Ross	DATE						9/29/2008
ISSUED		DATE	9/29/2008	SCALE	WC1	SHEET	2	CONT ON	3