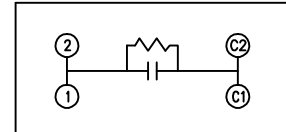
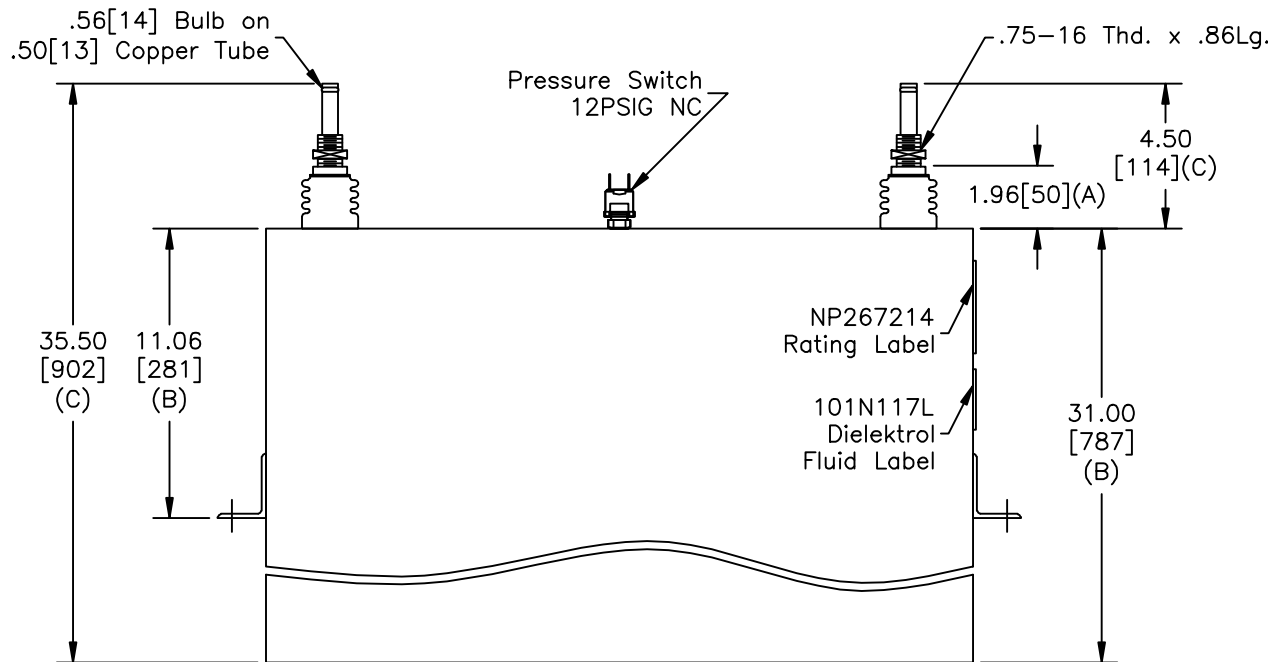
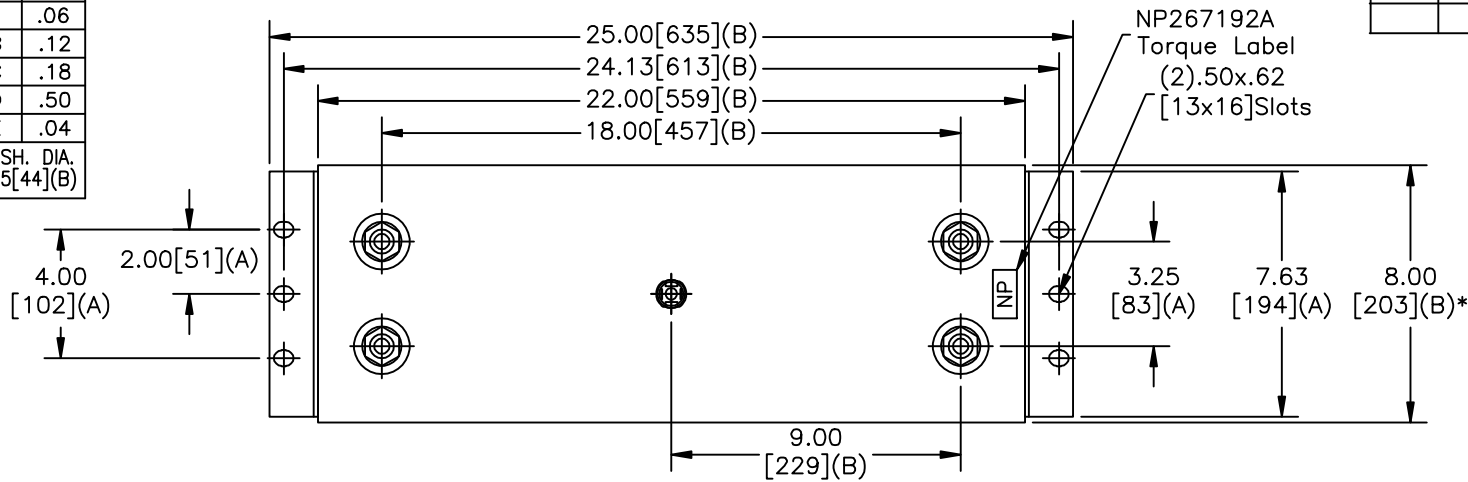


SIZE A	DWG NO 19L1288WH4	SHT 1	REV
REV	DESCRIPTION	DATE	APPROVED

TOL	+/-
A	.06
B	.12
C	.18
D	.50
E	.04
BUSH. DIA. 1.75[44](B)	



SCHEMATIC DIAGRAM - 107

CAPACITOR
WITH INTERNAL DISCHARGE RESISTORS

CAT. 19L1288WH4 SN
5350KVAR 3000V 300HZ 1PH
315.4 UF
7 GAL. COMBUSTIBLE LIQUID
CAUTION! BEFORE INSTALLING OR
OPERATING READ GEH-2733

MADE IN USA NP267214

* UP TO +.75[19]
CASE BULGE

MAX. TERMINAL
TIGHTENING TORQUE
15 FT-LBS.

NP267192A

GE ENERGY FORT EDWARD, N.Y., U.S.A.		SIZE A	Est Weight 290 lbs.	<h1>OUTLINE</h1> <h2>19L1288WH4</h2>	
DRAWN JBC	DATE 10/2/2009	SCALE	WC1		SHEET 1
ISSUED	DATE 10/2/2009			DISTR. TO	