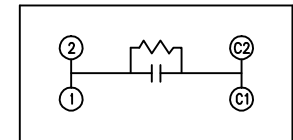
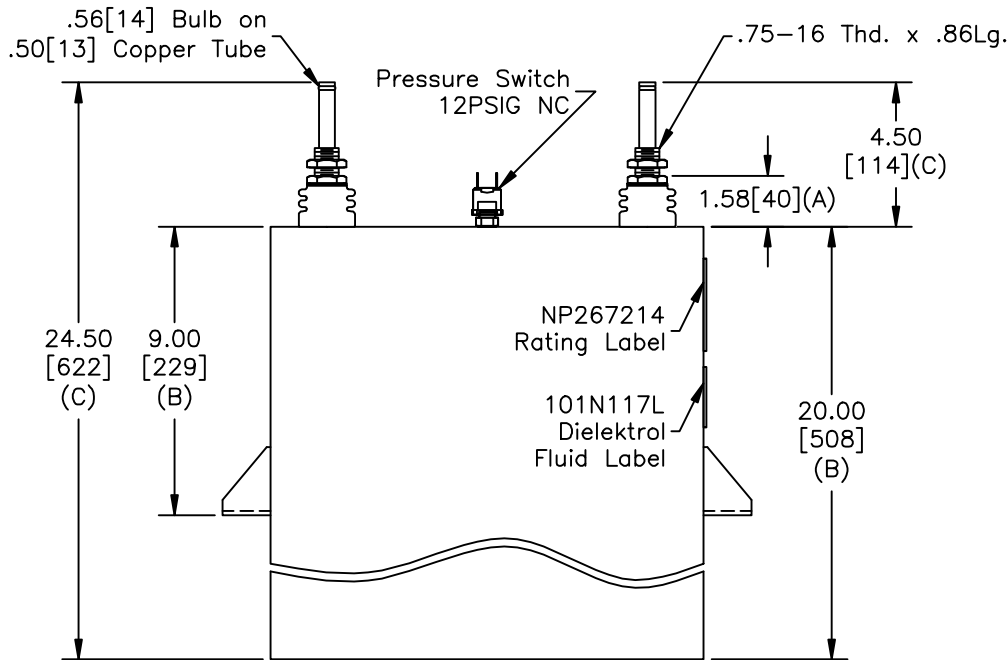
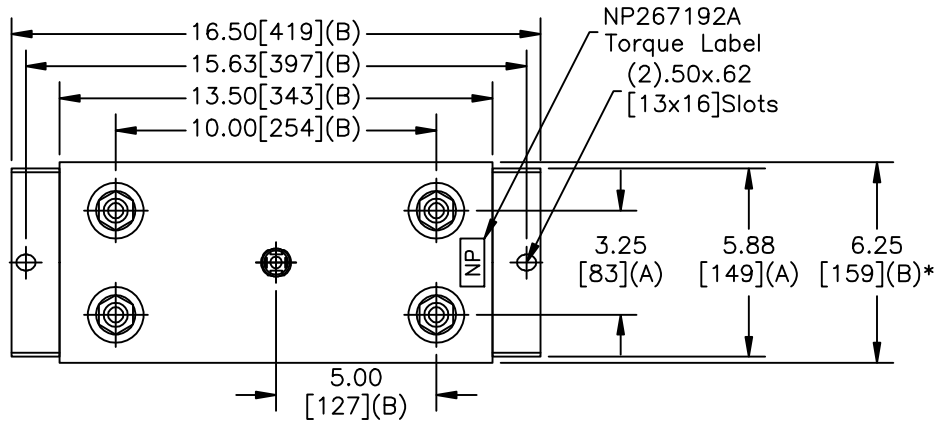


SIZE A	DWG NO 19L1290WH4	SHT 2	REV 0
REV 0	DESCRIPTION NEW	DATE 8/24/2010	APPROVED BTR

TOL	+/-
A	.06
B	.12
C	.18
D	.50
E	.04
BUSH. DIA.	1.75[44](B)



**GE** CAPACITOR  
WITH INTERNAL DISCHARGE RESISTORS

CAT. 19L1290WH4 SN  
1440KVAR 600V 600HZ 1PH  
1061 UF  
2.53 GAL. COMBUSTIBLE LIQUID  
CAUTION! BEFORE INSTALLING OR  
OPERATING READ GEH-2733

MADE IN USA NP267214

\* UP TO +.50[13]  
CASE BULGE

MAX. TERMINAL  
TIGHTENING TORQUE  
15 FT-LBS.

NP267192A

<b>GE ENERGY</b> FORT EDWARD, N.Y., U.S.A.		SIZE A	Est Weight 89 lbs.	<h1>OUTLINE</h1> <h1>19L1290WH4</h1>		
DRAWN B.Ross	DATE 8/24/2010	SCALE				
ISSUED	DATE 8/24/2010	WC1	SHEET 2	CONT ON	3	DISTR. TO