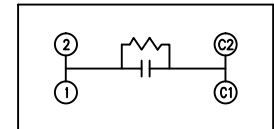
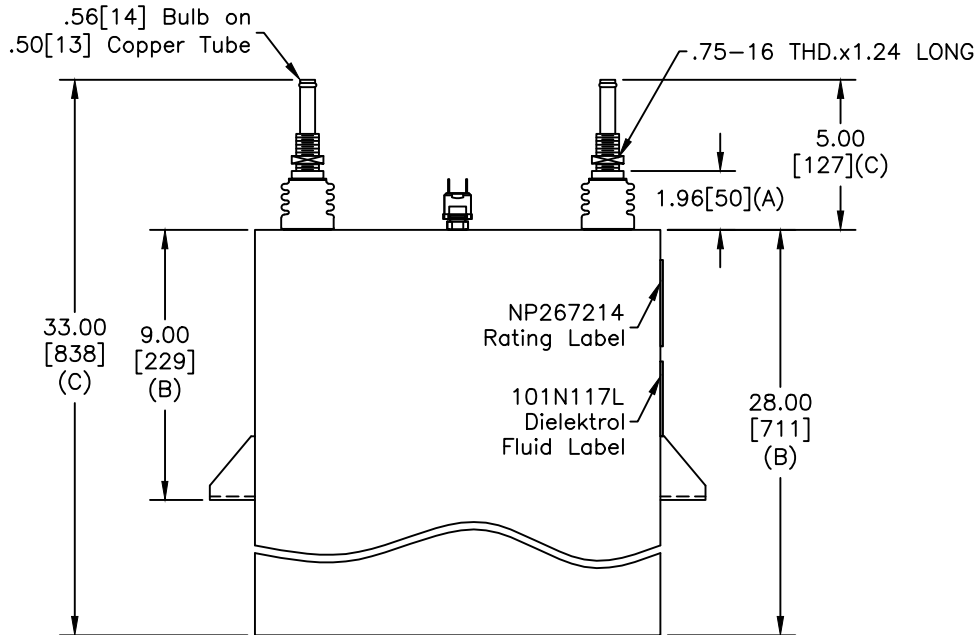
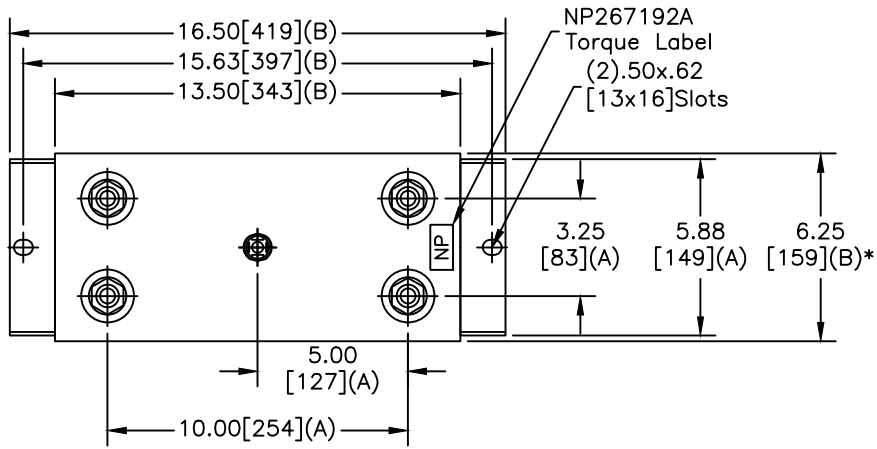


SIZE A	DWG NO 19L1300WH4	SHT 2	REV 1
REV 1	DESCRIPTION HAD SHORT BUSHING	DATE 04/24/2012	APPROVED JBC

TOL	+/-
A	.06
B	.12
C	.18
D	.50
E	.04
BUSH. DIA. 1.75[44](B)	



SCHEMATIC DIAGRAM - 107

CAPACITOR
WITH INTERNAL DISCHARGE RESISTORS

CAT. 19L1300WH4 SN
7125KVAR 3000V 1200HZ 1PH
105 UF/TAP
3.4 GAL. COMBUSTIBLE LIQUID
CAUTION! BEFORE INSTALLING OR
OPERATING READ GEH-2733

MADE IN USA NP267214

NOTES:

- Maximum terminal tightening torque
.50-13 thd. 15 ft-lbs. 20.3 N-m
.75-16 thd. 25 ft-lbs. 33.9 N-m
- Minimum water flow 1 GPM (3.8 l/m)

* UP TO +.50[13]
CASE BULGE

MAX. TERMINAL
TIGHTENING TORQUE
15 FT-LBS.

NP267192A

GE ENERGY FORT EDWARD, N.Y., U.S.A.		SIZE A	Est Weight 130 lbs. 59 kg	OUTLINE 19L1300WH4
DRAWN DMR	DATE 2/14/2012	SCALE		
ISSUED	DATE 2/14/2012	WC1	SHEET 2	CONT ON 3

DISTR. TO