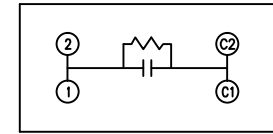
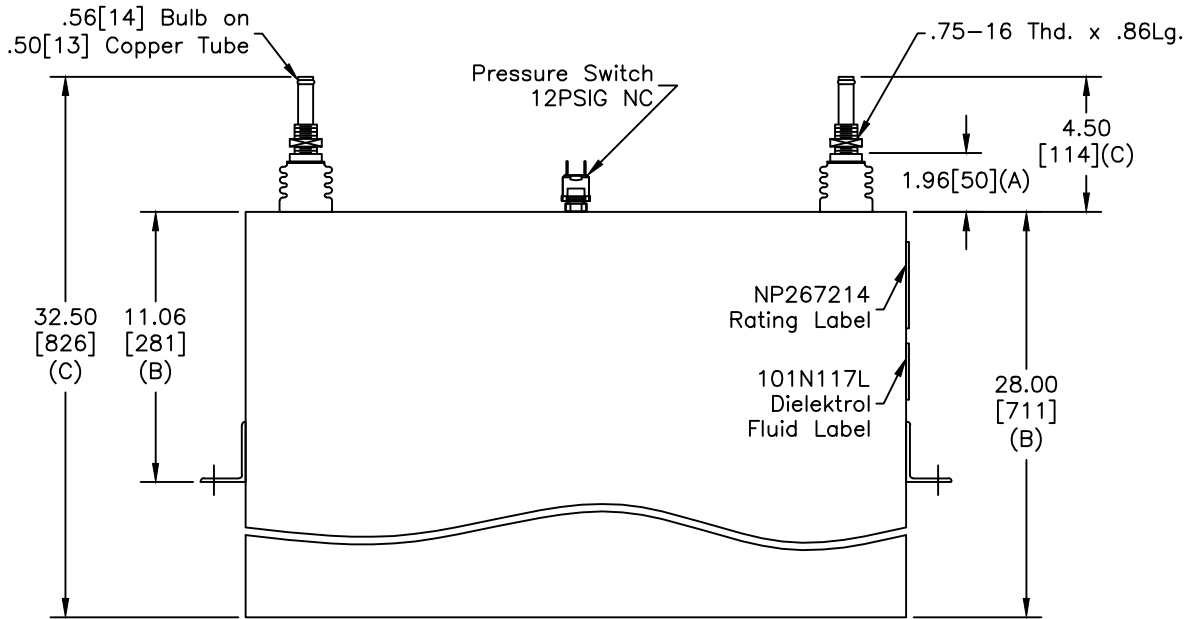
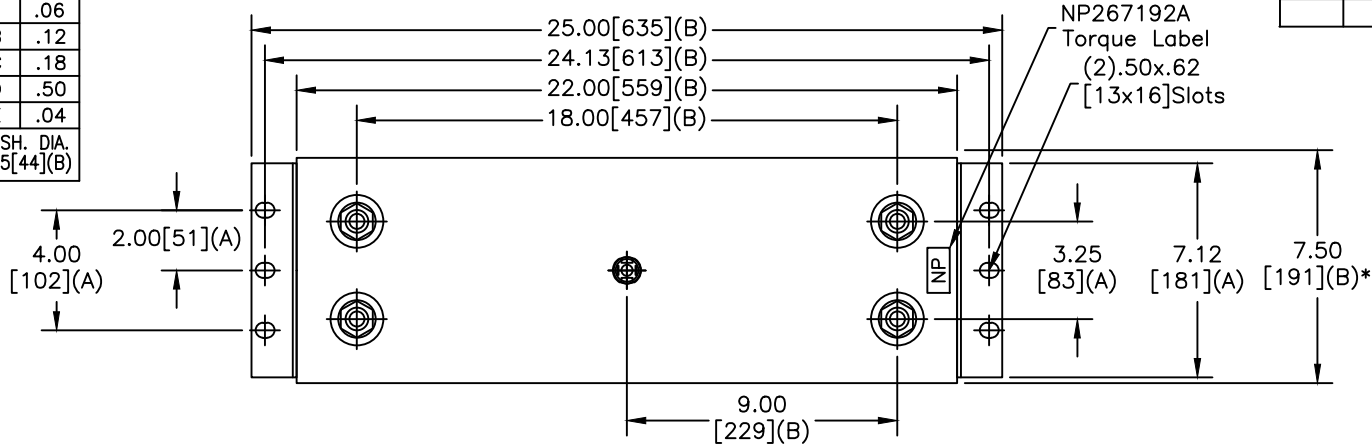


SIZE A	DWG NO 19L1304WH4	SHT 2	REV
REV	DESCRIPTION	DATE	APPROVED

TOL	+/-
A	.06
B	.12
C	.18
D	.50
E	.04
BUSH. DIA.	1.75[44](B)



SCHEMATIC DIAGRAM - 107

**GE** CAPACITOR  
WITH INTERNAL DISCHARGE RESISTORS

CAT. 19L1304WH4 SN  
4000 KVAR 2200V 300HZ 1PH  
438.4 UF  
6.2 GAL. COMBUSTIBLE LIQUID  
CAUTION! BEFORE INSTALLING OR  
OPERATING READ GEH-2733

MADE IN USA NP267214

\* UP TO +.75[19]  
CASE BULGE

MAX. TERMINAL  
TIGHTENING TORQUE  
15 FT-LBS.

NP267192A

<b>GE ENERGY</b> FORT EDWARD, N.Y., U.S.A.		SIZE A	Est Weight 216 lbs.	<b>OUTLINE</b> 19L1304WH4	
DRAWN DMR	DATE 3/12/2012	SCALE	WC1		
ISSUED	DATE 3/12/2012				

DISTR. TO