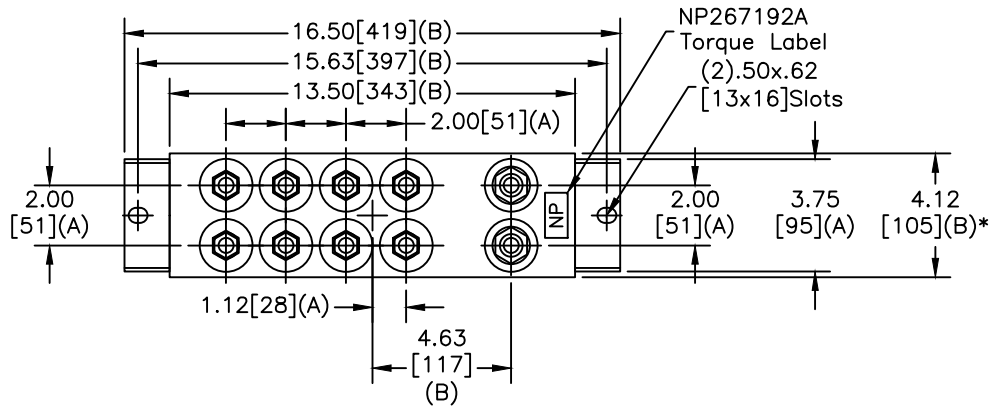
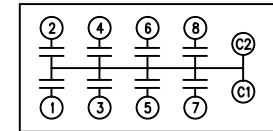
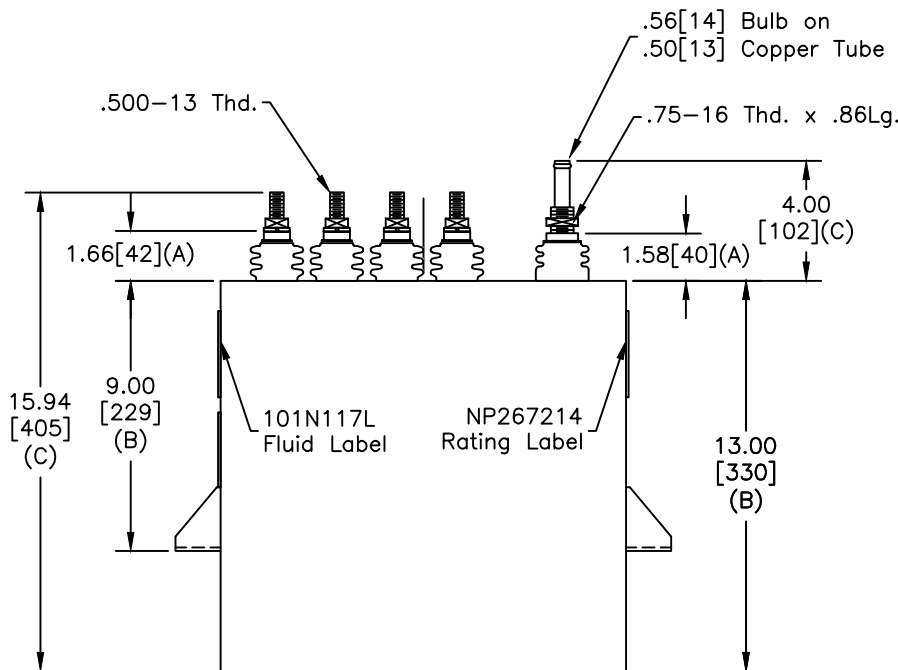


TOL	+/-
A	.06
B	.12
C	.18
D	.50
E	.04
BUSH. DIA.	1.75[44](B)

SIZE	DWG NO	SHT	REV
A	19L1313WH3	2	
REV	DESCRIPTION	DATE	APPROVED



TERM	uF	kVAR
1	4.42	225
2	4.42	225
3	4.42	225
4	4.42	225
5	4.42	225
6	4.42	225
7	4.42	225
8	4.42	225



SCHEMATIC DIAGRAM - 800

NO INTERNAL DISCH RESISTORS
 CAT. 19L1313WH3 SN
 1800KVAR 900V 10000HZ 1PH
 8x4.42 UF/TAP
 1.6 GAL. COMBUSTIBLE LIQUID
 CAUTION! BEFORE INSTALLING OR
 OPERATING READ GEH-2733
 MADE IN USA NP267214

- NOTES:
 1. Maximum terminal tightening torque
 .50-13 thd. 15 ft-lbs. 20.3 N-m
 .75-16 thd. 25 ft-lbs. 33.9 N-m
 2. Minimum water flow 1 GPM (3.8 l/m)

* UP TO +.50[13]
 CASE BULGE

MAX. TERMINAL
 TIGHTENING TORQUE
 15 FT-LBS.

NP267192A

	GE ENERGY FORT EDWARD, N.Y., U.S.A.		SIZE	A	OUTLINE 19L1313WH3					
	DRAWN	JBC	DATE				1/24/2013			
ISSUED		DATE	3/1/2013	SCALE	WC15	SHEET	2	CONT	ON	-

DISTR. TO