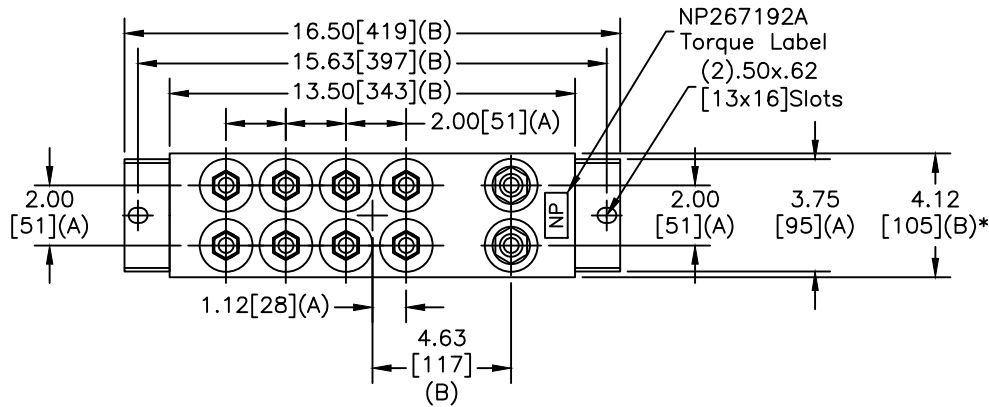
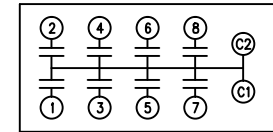
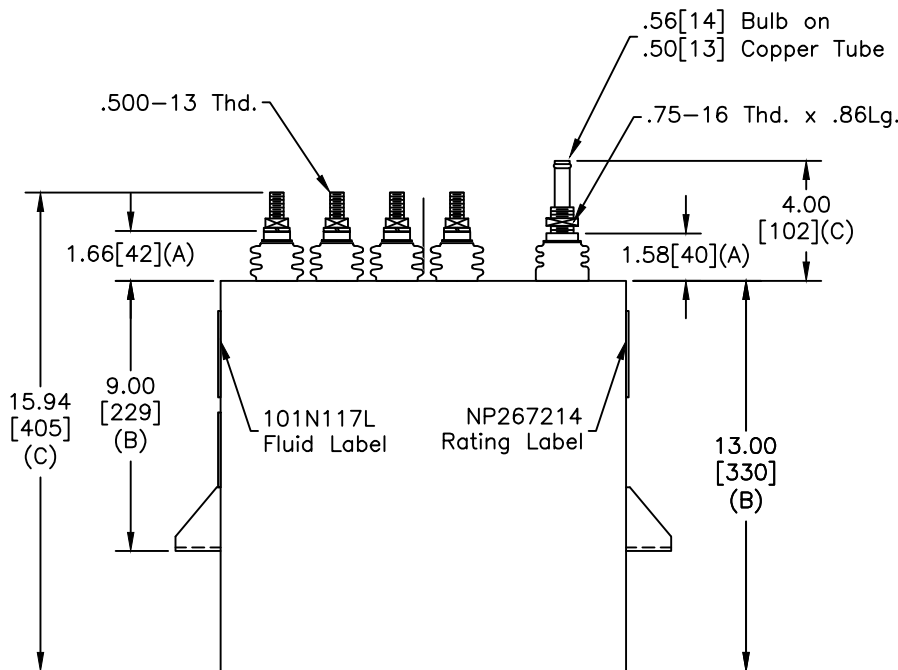


TOL	+/-
A	.06
B	.12
C	.18
D	.50
E	.04
BUSH. DIA.	1.75[44](B)

SIZE	DWG NO	SHT	REV
A	19L1315WH3	2	
REV	DESCRIPTION	DATE	APPROVED



TERM	uF	kVAR
1	1.62	150
2	1.62	150
3	1.62	150
4	1.62	150
5	1.62	150
6	1.62	150
7	16.2	150
8	1.62	150



SCHEMATIC DIAGRAM - 800

NO INTERNAL DISCH RESISTORS
 CAT. 19L1315WH3 SN
 1200KVAR 700V 3000HZ 1PH
 8x1.62 UF/TAP
 1.6 GAL. COMBUSTIBLE LIQUID
 CAUTION! BEFORE INSTALLING OR
 OPERATING READ GEH-2733
 MADE IN USA NP267214

- NOTES:
 1. Maximum terminal tightening torque
 .50-13 thd. 15 ft-lbs. 20.3 N-m
 .75-16 thd. 25 ft-lbs. 33.9 N-m
 2. Minimum water flow 1 GPM (3.8 l/m)

* UP TO +.50[13]
 CASE BULGE

MAX. TERMINAL
 TIGHTENING TORQUE
 15 FT-LBS.

NP267192A

	GE ENERGY FORT EDWARD, N.Y., U.S.A.		SIZE A	OUTLINE 19L1315WH3	
	DRAWN JBC	DATE 1/24/2013	SCALE WC15		
ISSUED	DATE 3/1/2013				

DISTR. TO