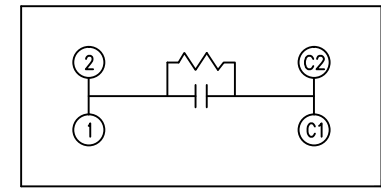
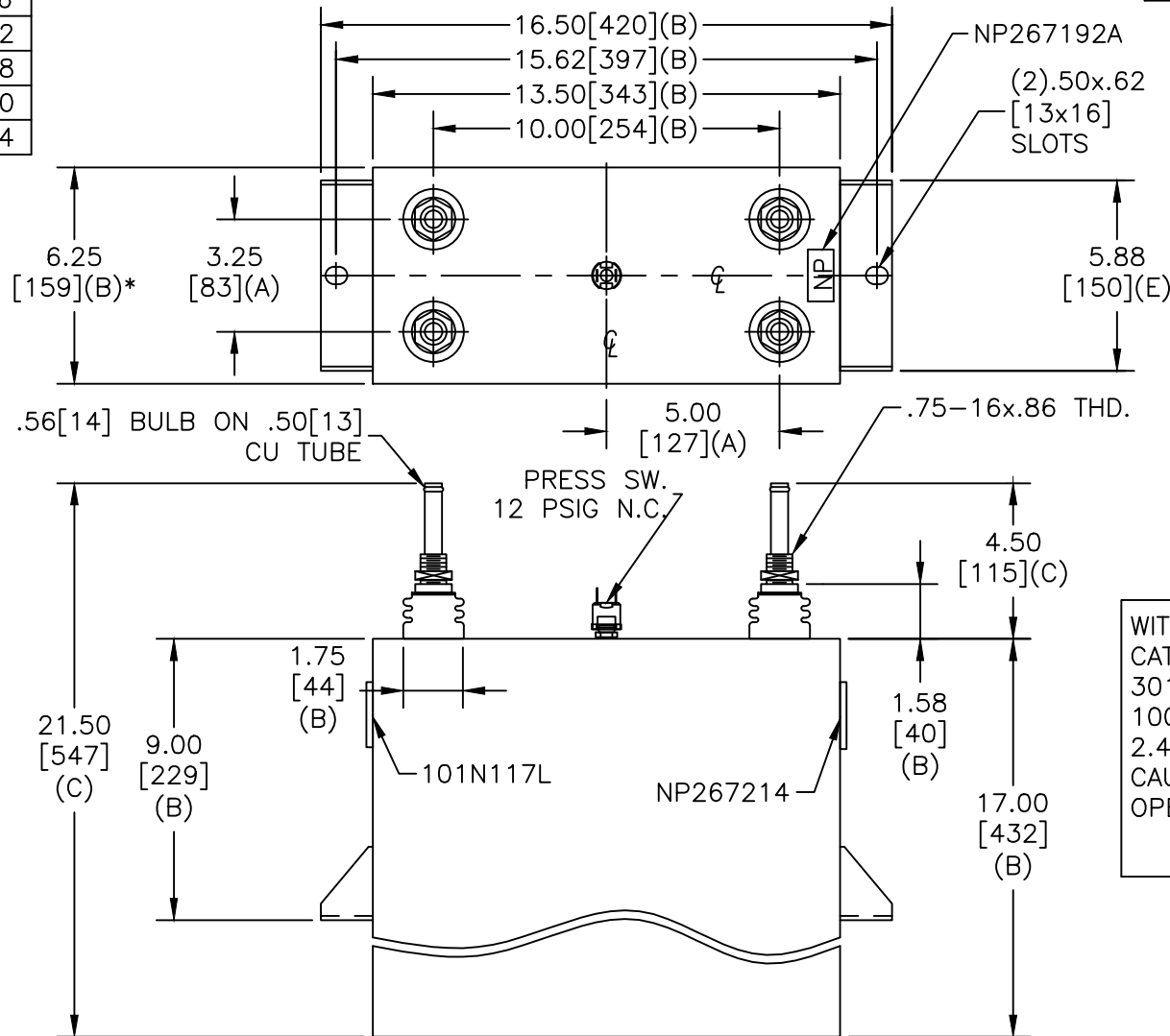


| | | | |
|-----------|----------------------|----------|----------|
| SIZE A | DWG NO 19L1316WH4 | SHT 2 | REV |
| REV | DESCRIPTION | DATE | APPROVED |

| TOL | +/- |
|-----|-----|
| A | .06 |
| B | .12 |
| C | .18 |
| D | .50 |
| E | .04 |



SCHEMATIC DIAGRAM - 107

WITH INTERNAL DISCH RESISTORS
 CAT. 19L1316WH4 SN
 3016VAR 2000V 1200HZ 1PH
 100.0 UF
 2.4 GAL. COMBUSTIBLE LIQUID
 CAUTION! BEFORE INSTALLING OR
 OPERATING READ GEH-2733
 NP267214

* UP TO +.50 [13] CASE BULGE

MAX. TERMINAL
 TIGHTENING TORQUE
 15 FT-LBS
 NP267192A

| | | |
|--|-----------|----------------|
| GE ENERGY FORT EDWARD, N.Y., U.S.A. | | SIZE A |
| DRAWN | JBCozzens | DATE 5/20/2013 |
| ISSUED | | DATE 5/20/2013 |

| | | |
|-----------------------|---------|-----------|
| OUTLINE 19L1316WH4 | | |
| SCALE | SHEET 2 | CONT ON 3 |

DISTR. TO