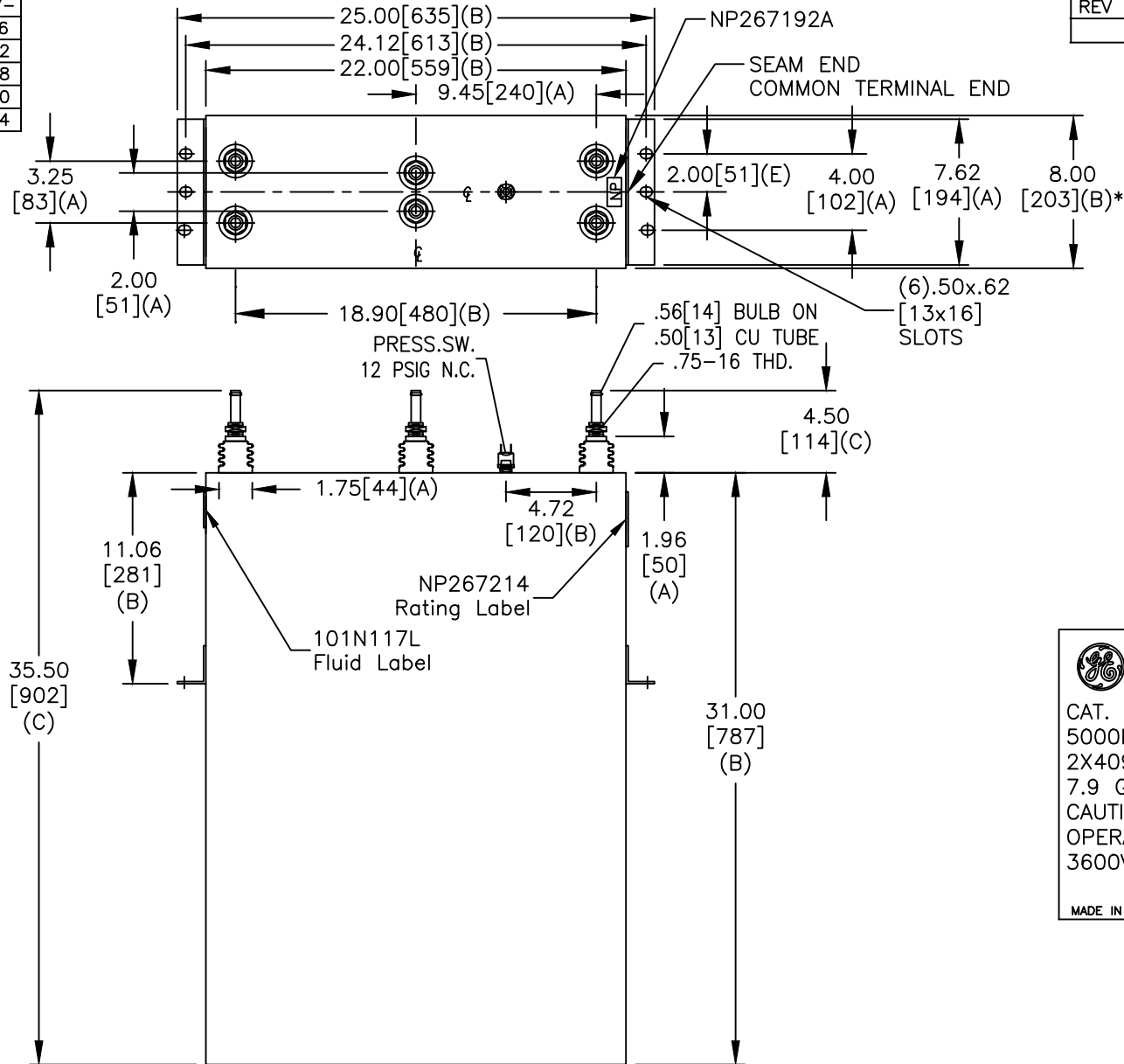
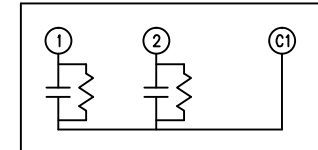


SIZE A	DWG NO 19L1326WH4	SHT 2	REV
REV	DESCRIPTION	DATE	APPROVED

TOL	+/-
A	.06
B	.12
C	.18
D	.50
E	.04



3600V BETWEEN TERMINAL SETS 1 & 2



SCHEMATIC DIAGRAM - 212

GE CAPACITOR
WITH INTERNAL DISCHARGE RESISTORS

CAT. 19L1326WH4 SN
5000KVAR 1800V 300HZ 1PH
2X409 UF/TAP
7.9 GAL. COMBUSTIBLE LIQUID
CAUTION! BEFORE INSTALLING OR OPERATING READ GEH-2733
3600V RATED BETWEEN SECT 1&2

MADE IN U.S.A. NP267214

* UP TO +.75[19] CASE BULGE

MAX. TERMINAL TIGHTENING TORQUE
15 FT-LBS
NP267192A

GE ENERGY FORT EDWARD, N.Y., U.S.A.		SIZE A	OUTLINE 19L1326WH4	
DRAWN JBC	DATE 8/14/2014	SCALE		
ISSUED	DATE 8/14/2014	SHEET 2	CONT ON 3	DISTR. TO